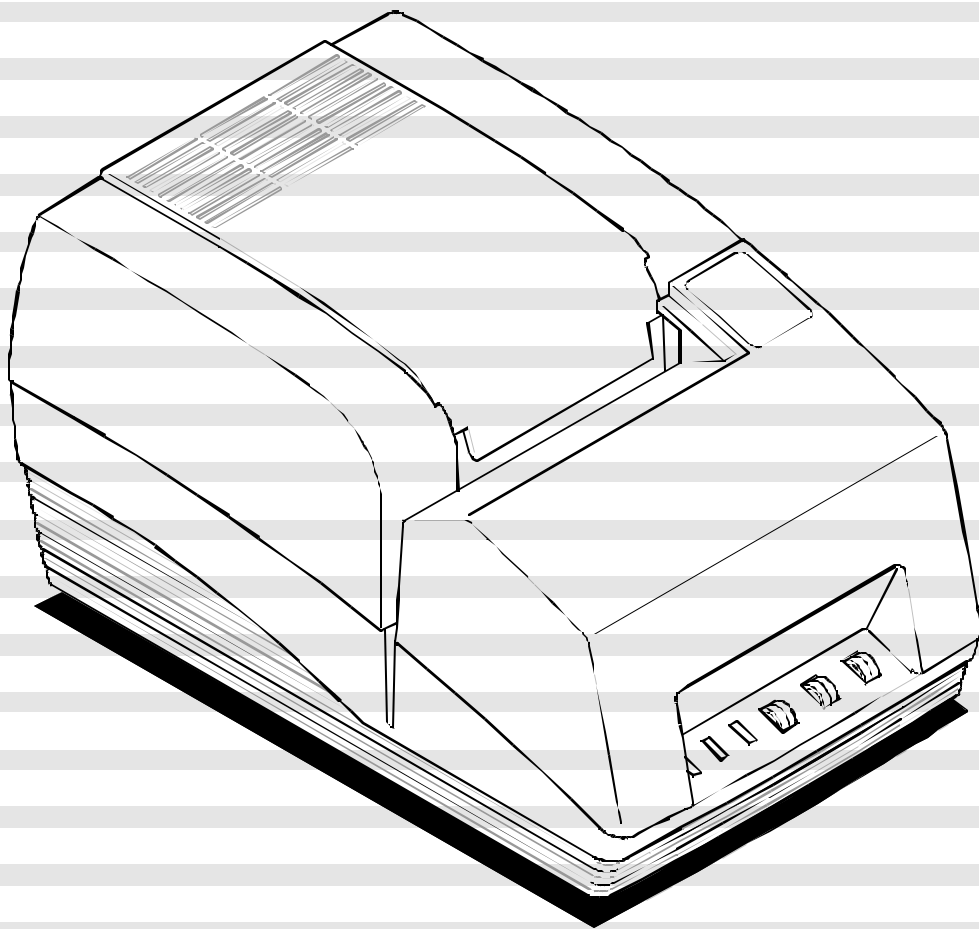


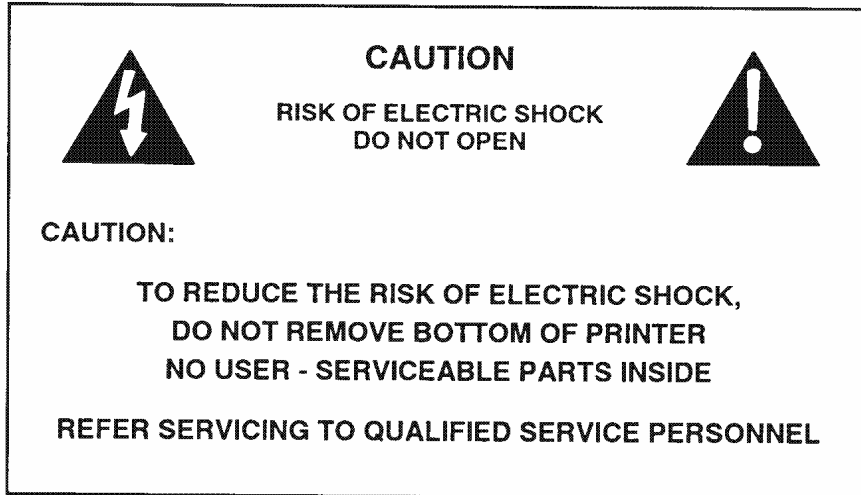
PcOS SERIES 150

Spare Parts Guide



ithaca[®]
a product of TRANSACT

PN: 15-06367



WARNING: To prevent fire or shock hazard, do not expose this printer to rain or moisture.

© 2004-2005 TransAct Technologies, Inc. All rights reserved.

NOTICE TO ALL PERSONS RECEIVING THIS DOCUMENT:

The information in this document is subject to change without notice. No part of this document may be reproduced, stored or transmitted in any form or by any means, electronic or mechanical, for any purpose, without the express written permission of TransAct Technologies, Inc. ("TransAct"). This document is the property of and contains information that is both confidential and proprietary to TransAct. Recipient shall not disclose any portion of this document to any third party.

TRANSACT DOES NOT ASSUME ANY LIABILITY FOR DAMAGES INCURRED, DIRECTLY OR INDIRECTLY, FROM ANY ERRORS, OMISSIONS OR DISCREPANCIES IN THE INFORMATION CONTAINED IN THIS DOCUMENT.

Some of the product names mentioned herein are used for identification purposes only and may be trademarks and/or registered trademarks of their respective companies.

TransAct, PowerPocket, Magnetec, Insta-Load, POSjet, Ithaca, 50Plus and "Made to Order. Built to Last" are registered trademarks and BANKjet is a trademark of TransAct Technologies, Inc. Epson and ESC/POS are registered trademarks of Seiko Epson Corporation. Axiohm is a registered trademark of Dardell Technologies. IBM is a registered trademark of the International Business Machines Corporation.

Copyright

© 2004-2005 TransAct Technologies, Inc. All rights reserved.

Revision A

November 2005

Printed in the United States of America

Federal Communications Commission Radio Frequency Interference Statement

The Series 150 Printer complies with the limits for a Class A computing device in accordance with the specifications in Part 15 of FCC rules which are designed to minimize radio frequency interference during installation; however, there is no guarantee that radio or television interference will not occur during a particular installation. If this equipment does cause interference to radio or television reception, which can be determined by turning the equipment off and on while the radio or television is on, the user is encouraged to try to correct the interference by one or more of the following measures:

- ◆ Reorient the radio or television receiving antenna;
- ◆ Relocate the printer with respect to the receiver;
- ◆ Plug the printer and receiver into different circuits.

If necessary, the user may consult their dealer or an experienced radio/television technician for additional suggestions. The user may find the following booklet prepared by the Federal Communications Commission helpful: *How to Identify and Resolve Radio/TV Interference Problems*.

This booklet is available from the United States Government Printing Office, Washington, DC 20402. Ask for stock number 004-000-00345-4.

Canadian Department of Communications Radio Interference Statement

The Series 150 Printer does not exceed Class A limits for radio noise emissions from digital apparatus set out in the Radio Interference Regulations of the Canadian Department of Communications.

UL, C-UL, VDE, CE Statement

TransAct Technologies' printers are UL and C-UL Listed, VDE Certified, and carry the CE Mark.

TABLE OF CONTENTS

PRODUCT INFORMATION	1
What is in this book?	1
Contacting TransAct.....	2
Service Information.....	3
TransAct Product Support.....	3
Return Materials Authorization and Return Policies.....	3
Warranty Information.....	3
Options	3
Description of the Series 150 Printer.....	4
Series 150 Models.....	4
Standard Features.....	5
Optional Features.....	6
Technical Specifications	6
Printing Specifications	6
Reliability	6
Dimensions.....	6
Weight.....	6
Power Requirements.....	7
Environmental Conditions	7
Communication Interfaces and Cash Drawer Connectors.....	8
Serial Cable	8
Parallel Cable	8
IEEE 1284 Bidirectional Parallel Cable	8
CLEANING AND ADJUSTMENTS	9
Cleaning the Printer	9
Making Adjustments	9
Necessary Tools	9
Adjusting the Platen Gap.....	10

ASSEMBLY / DISASSEMBLY 12

Precautions for Disassembly.....	12
Disconnecting the Power Cord.....	13
Disconnecting the Communication Cable.....	14
Removing the Ribbon Cassette.....	16
Print Head.....	18
Removing the Used Print Head.....	18
Installing the New Print Head.....	20
Indicator Lights.....	21

PARTS LISTS 22

Packing Materials/Publications.....	22
Printer Assembly.....	24
Paper Cover.....	26
Cassette Cover without Knife.....	27
Cassette Cover with Knife.....	28
Electronic Base.....	29
Cutter.....	30
Take-up Motor Assembly.....	31
Switch Assembly and Light Pipes.....	32
Print Mechanism Assembly.....	33
Carriage Assembly.....	34
Carriage Motor Assembly.....	35

PRODUCT INFORMATION

WHAT IS IN THIS BOOK?

Who should read this book?

This book is intended for customers ordering spare parts or those requiring information about the basic features and operation of the PcOS Series 150 printer.

Where can you find more information?

Internet Support and Sales Services

www.transact-tech.com

TransAct Technologies Incorporated maintains an Internet web site with content devoted to supporting our products. The address is <http://www.transact-tech.com>. The Support Services page contains support information for our printers. The PcOS Series 150 printer support pages offer the latest information. Within the Support Services section you can find documentation for the PcOS Series 150 printer, including a current copy of the *Operator's Guide* and *Programmer's Guide*.

A *Programmer's Guide* is available to help you program a point-of-sale terminal or a PC to work with the printer. It describes all the commands the printer recognizes to perform its functions.

An *Operator's Guide* is also available and is intended for new or experienced operators. It covers setting up and using the Series 150 Printer with any point-of-sale system.

For information about ordering these books, refer to the next section.

CONTACTING TRANSACT

Contact TransAct's Ithaca facility for information about the PcOS Series 150 printer and how it works with your system. For information on International distribution, visit our web site at www.transact-tech.com. Contact TransAct's Sales and Technical Support Departments at the following address and telephone or fax numbers.

Technical Support

Receive technical support, order documentation, request additional information, or send in a printer for service.

Sales

Order supplies, receive more product information, or order product brochures.

TransAct Technologies Incorporated
Ithaca Facility
20 Bomax Drive
Ithaca, NY 14850 USA

TransAct Technologies
World Gaming Headquarters
& Western Regional Repair Center
6700 Paradise Road
Suite D
Las Vegas, NV 89119 USA

Telephone	(877) 7-ITHACA or (607) 257-8901
Main fax	(607) 257-8922
Sales fax	(607) 257-3868
Technical Support fax	(607) 257-3911
Web site	http://www.transact-tech.com

SERVICE INFORMATION

TransAct Technologies Incorporated has a full service organization to meet your printer service and repair requirements. If your printer needs service, please contact your authorized printer service center. If any problems still persist, you can directly contact the Ithaca facility's Technical Support Department at (607) 257-8901 or (877) 7-ITHACA for a return authorization. International customers should contact your distributor for services.

TransAct Product Support

Monday through Friday, 8 A.M. to 8 P.M. (excluding holidays).

To obtain Technical Support, call:

TransAct's Ithaca Facility at (607) 257-8901, or (877) 7-ITHACA.

Please have the following information at hand:

1. The Model Number and Serial Number.
2. A list of any other peripheral devices attached to the same port as the printer.
3. The application software, operating system, and network you are using.
4. A copy of your printer's Configuration Settings.
5. What happened and what you were doing when the problem occurred.
6. How you tried to solve the problem.

Return Materials Authorization and Return Policies

If the technical support person determines that the printer should be serviced at our facility, and you want to return the printer for repair, a Returned Materials Authorization (RMA) number must be issued before returning the printer. Prepare the printer being returned for repair as follows:

1. Remove and discard ink cartridges.
2. Pack the printer to be returned in the original packing material. Packing items may be purchased from TransAct's Ithaca Facility.
3. Return only the accessories that a Support Technician asks you to include.
4. Write the RMA number clearly on the outside of the box.

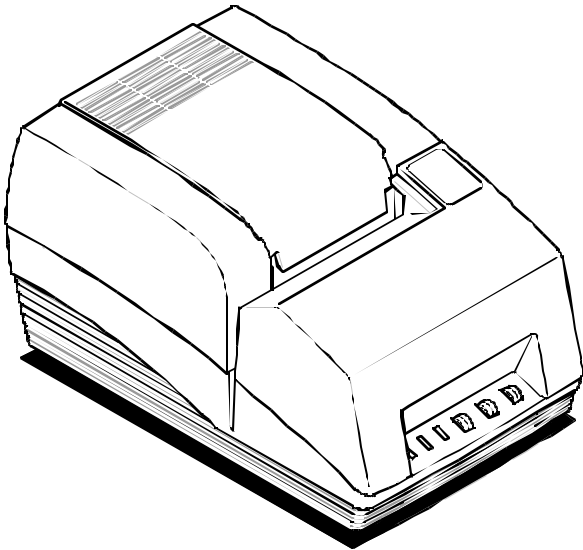
Warranty Information

Options

All TransAct Technologies PcOS Series 150 Printers come with a standard 24-month warranty covering both parts and labor. An optional warranty, covering both parts and labor for an additional 12 months, may be purchased separately.

For more information concerning the warranty options, please contact your dealer or the Sales Department at TransAct Technologies.

DESCRIPTION OF THE SERIES 150 PRINTER



The PcOS (personal computer, point-of-sale) Series 150 Printer is a stand-alone, 40-column, high-speed impact printer. The Series 150 Printer performs a variety of functions in a point-of-sale environment and is available in the following models:

- ◆ Model 151: Receipt only
- ◆ Model 152: Receipt and Journal
- ◆ Model 153: Receipt and Validation (with or without Journal)

Series 150 Models

Each of the three models in the Series 150 line of printers has its own unique set of features.

PcOS Model 151 Receipt Printer

The Model 151 is a receipt printer used for applications requiring high-speed printing of receipts.

- ◆ 340 characters per second bidirectional printing
- ◆ 41-column printing at 17 characters per inch

PcOS Model 152 Receipt and Journal Printer

The Model 152 is a receipt and journal printer used for applications requiring a transaction audit trail (journal) in addition to high-speed printing of receipts.

- ◆ 340 characters per second bidirectional printing
- ◆ 41-column printing at 17 characters per inch
- ◆ Journal take-up

PcOS Model 153 Receipt, Journal, and Validation Printer

The Model 153 is a receipt and validation printer (with or without journal) used for applications requiring printing of up to 15 lines on inserted forms such as checks or charge slips. In addition, it provides the same high-speed journal and receipt printing as the Model 152.

- ◆ 340 characters per second bidirectional printing
- ◆ 41-column printing at 17 characters per inch
- ◆ Journal take-up (optional)
- ◆ Form insertion sensor
- ◆ 15-line validation

Standard Features

The following features and items are standard on all Series 150 printers:

- ◆ Centronics parallel interface with 6K buffer
- ◆ Internal International Power Supply (95 to 265 VAC)
- ◆ Operating controls and lights
 - Power on/off switch and indicator
 - Paper feed button
 - Forms release button
 - Resume button
- ◆ Ready, Alarm, and Power LED's
- ◆ Paper out sensor
- ◆ Operator controlled self-test
- ◆ Cash drawer connectors (RJ12) and driver (24V, 1.5 amp pulse for approximately 150 ms; drawer open/closed status reporting)
- ◆ Nine-pin stored energy print head
- ◆ Short line-seeking logic
- ◆ Characters and graphics
 - Lowercase characters with descenders
 - 340 characters per second bidirectional printing
 - 41-column printing at 17 characters per inch
 - Emphasized and enhanced print
 - IBM compatible all-points-addressable (APA) graphics
- ◆ Software-controlled vertical spacing
- ◆ Snap-on ribbon cassette
- ◆ Steel receipt tear-off bar

Optional Features

The optional features either replace a standard feature or enhance the operation of the printer. All optional features are installed at the factory and must be selected when the printer is ordered.

- ◆ RS-232C serial communication interface
- ◆ IEEE 1284 bidirectional parallel communication interface
- ◆ USB (Universal Serial Bus) - to be announced
- ◆ OPOS drivers
- ◆ Knife (Model 151)
- ◆ Journal cover lock
- ◆ Custom colors and logo

TECHNICAL SPECIFICATIONS

Printing Specifications

- | | |
|-------------------------|--|
| ◆ Printing method | Impact dot matrix |
| ◆ Head wire arrangement | 9-pins in line |
| ◆ Print wire diameter | 0.34 mm (0.012 in.) |
| ◆ Print wire pitch | 0.353 mm (0.013 in.) |
| ◆ Print directions | bidirectional, logic-seeking |
| ◆ Print zone | 71.12 mm (2.8 in.) or 60.96 mm (2.4 in.) |

Reliability

- ◆ Mean time between failure (except print head): 30,000 hours (Model 151)
- ◆ Print head life: 200 million characters
- ◆ Mean time to repair: 15 minutes

Dimensions

- ◆ Width: 6.30 inches
- ◆ Length: 11.35 inches
- ◆ Height: 5.65 inches

Weight

- ◆ Approximate weight: 6.5 pounds
- ◆ Approximate shipping weight: 9.5 pounds

Power Requirements

The Model 150 is designed to be AC self-powered in domestic and international markets. The printer is equipped with a universal input power supply that is designed to operate worldwide without modification.

Supply Voltage Rating (VAC)	Supply Voltage Range (VAC)	Frequency (Hz)	Rated Power (watts)	Current Idle (amps)	Current Printing (amps)
100 - 240	90 - 264	47 - 63	45	0.08 @ 120VAC 0.04 @ 240VAC	0.9 @ 120VAC 0.5 @ 240VAC

Environmental Conditions

The printer will run at its best when stored and operated in an environment that meets the following temperature and humidity conditions:

- ◆ Operating temperature: 0° to 50°C (32° to 122°F)
- ◆ Storage temperature: -10° to +60°C (-14° to +140°F)
- ◆ Operating relative humidity: 10% to 90% (noncondensing)
- ◆ Storage relative humidity: 5% to 90%

COMMUNICATION INTERFACES AND CASH DRAWER CONNECTORS

Serial Cable

Cable Requirements

The PcOS Series 150 Printer requires an RS-232C shielded cable, no more than 50 feet long. The cable must be UL and CSA approved.

RS-232C Communication

The RS-232C interface uses the following protocol and communication characteristics:

- ◆ Up to 19.2K baud
- ◆ Up to 6K buffer
- ◆ Ready/Busy or XON/XOFF protocol
- ◆ Communications diagnostic mode

Serial Cable Configurations

The following cable configurations are for different host requirements.

Serial PC to Series 150 (Null Modem)

TransAct Technologies' part number, 10-2020, 9-pin to 9-pin female cable for PcOS Series 150 printers should be used to connect PC's or PS/2's with 9-pin serial ports.

Serial AT to Series 150 (Null Modem)

TransAct Technologies' part number, 10-2021, 9-pin to 25-pin female cable for PcOS Series 150 printers should be used to connect PC's or PS/2's with 25-pin serial ports.

Parallel Cable

Cable Requirements

The PcOS Series 150 Printer requires a 25-pin male D-shell connector at the printer. To connect the printer to most PC's, use TransAct Technologies part number: 253-9800007 25-pin male to 25-pin male parallel interconnect cable.

IEEE 1284 Bidirectional Parallel Cable

The PcOS Series 150 Printer supports the IEEE 1284, bidirectional, parallel peripheral, interface standard, Modes 0 and 4. This provides a bidirectional link to the parallel port. Refer to the *Programmer's Guide* for further information.

CLEANING AND ADJUSTMENTS

CLEANING THE PRINTER

Remove paper dust periodically by using a vacuum cleaner or air compressor.

Caution: Do not use alcohol- or petroleum-based chemicals to clean the printer as these will damage the plastic parts. The carriage rack is particularly sensitive and will be permanently damaged if exposed to these chemicals. Take special care not to get the cleaner on any electronic components.

None of the internal parts of the printer require lubrication or routine maintenance. Apply a common cleaner such as fantastik[®] or Formula 409[®] to a damp cloth and gently wipe the surface of the printer and keypad.

MAKING ADJUSTMENTS

The adjustments described in this section are required to correct print head drag, print quality flaws, or the print mechanism.

If the print density on a print sample is consistent from top to bottom and the print head does not drag, no adjustment is necessary. If the print head drags or if the print sample is inconsistent, adjust the platen gap.

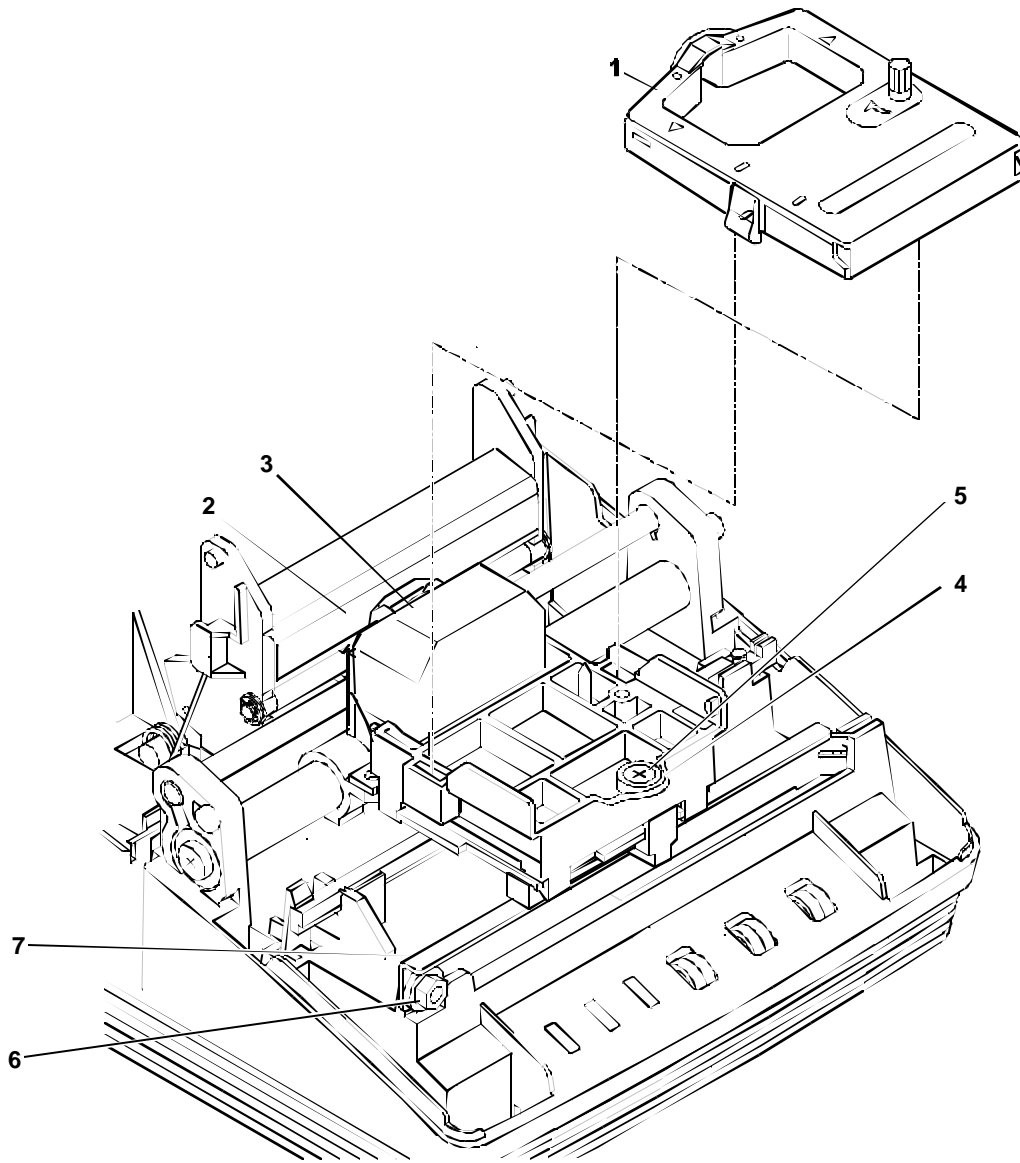
Necessary Tools

Caution: Using the wrong tools may cause personal injury or damage the printer. Be sure to use the proper tools when maintaining or servicing the Series 150 Printer.

The following list provides the necessary tools needed to properly maintain the Series 150 Printer.

- ◆ #1 Phillips screwdriver
- ◆ Thickness gauge: 0.012 inch
- ◆ Paper clip
- ◆ Nut driver

Adjusting the Platen Gap



1. Turn off the printer.
2. Remove all paper from the printer.
3. Remove the ribbon cassette (1).
4. Move the print head (3) all the way to the right.
5. With a 0.012-inch thickness gauge, check the air gap between the platen (2) and the print head (3). The air gap should measure 0.305 ± 0.050 mm (0.012 ± 0.002 in.).
6. If an adjustment is needed, press down on the outer ring of the adjusting gear (4) with the straightened end of a paper clip, and turn the adjusting screw (5) with a #1 Phillips screwdriver until the gap measures 0.305 ± 0.050 mm (0.012 ± 0.002 in.).
Turn the adjusting gear (4) counterclockwise to decrease the air gap, clockwise to increase the air gap.
7. Move the print head (3) to the left end of the platen (2), and check the air gap as in Step 5.
8. If an adjustment is needed, loosen the nut (6) at the left end of the carriage support rail (7).
Move the rail up or down to decrease the air gap.
9. Retighten the nut (6).
10. Recheck the air gap at both sides of the platen (2).

ASSEMBLY/DISASSEMBLY

PRECAUTIONS FOR DISASSEMBLY

Before disassembling any part of the printer, be sure the power is turned off. Disconnect the AC power cord, the communication cable, and the cash drawer cables.

Caution: Controller board and keypad PC board can easily be damaged by static electricity. Observe ESD precautions. Wear a grounded wrist strap, and use a static mat or other protected work surface. Do not place the printed circuit boards directly on the printer or floor.

Necessary Tools

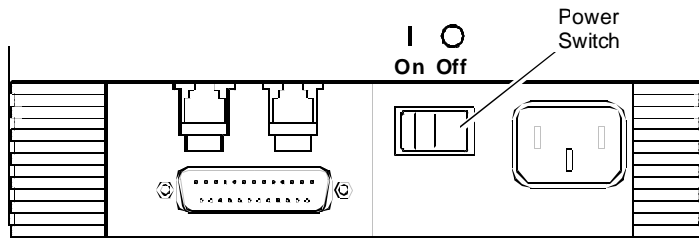
Caution: Using the wrong tools may cause personal injury or damage the printer. Be sure to use the proper tools when maintaining or servicing the printer.

The following list provides the necessary tools for properly maintaining the Series 150 Printer.

- ◆ Screwdrivers
 - #0 Phillips
 - #1 Phillips
 - #2 Phillips
 - Small flat blade
 - Large flat blade
- ◆ Nut Drivers
 - 3 mm
- ◆ Miscellaneous
 - Thickness gauge: 0.012 inch
 - Hobby knife
 - Small needle-nose pliers

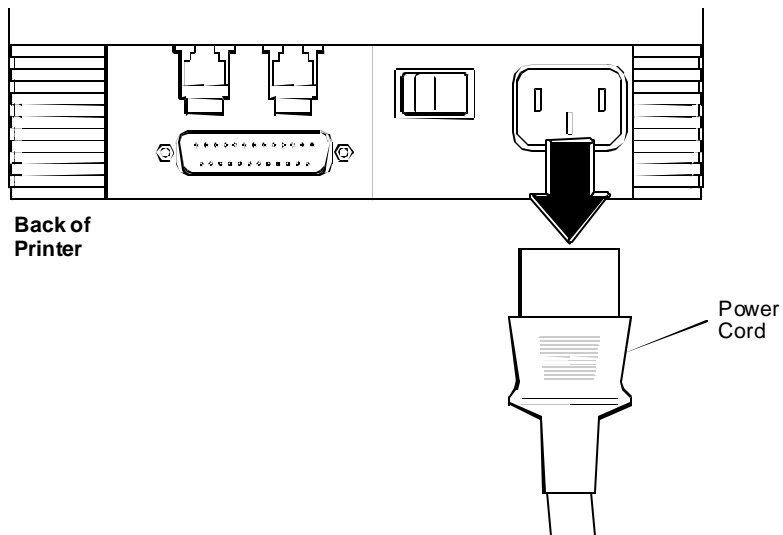
DISCONNECTING THE POWER CORD

Caution: The printer must be grounded through the three-prong power connector. Do not use a ground defeating adapter.



Back of
Printer

1. Be sure the power switch is turned off.

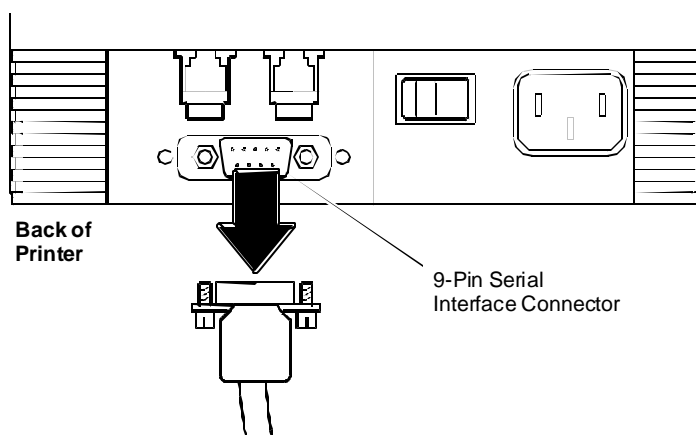


2. Disconnect the external AC power source and the power cord from the power socket located on the back of the printer.

DISCONNECTING THE COMMUNICATION CABLE

Depending on the interface your system uses, disconnect either the serial or parallel communication cable from the connector on the back of the printer.

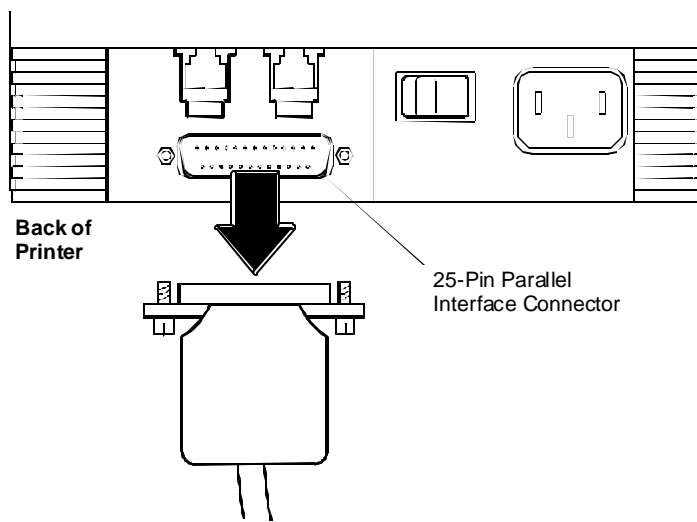
Disconnecting the Serial Cable



1. Turn the printer and the host system or PC off.
2. Loosen the two mounting screws on each side of the cable connector.
3. Disconnect the 9-pin serial interface cable from the connector located on the back of the printer.

Refer to the “Communication Interfaces and Cash Drawer Connectors” for information on the serial cable requirements.

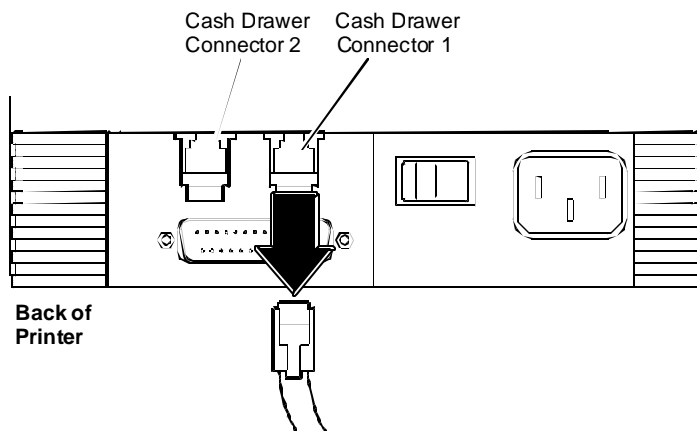
Disconnecting the Parallel Cable



1. Turn the printer and the host system or PC off.
2. Disconnect the 25-pin parallel interface cable from the connector located on the back of the printer.

Refer to the “Communication Interfaces and Cash Drawer Connectors” for information on the parallel cable requirements.

Disconnecting the Cash Drawer Cables

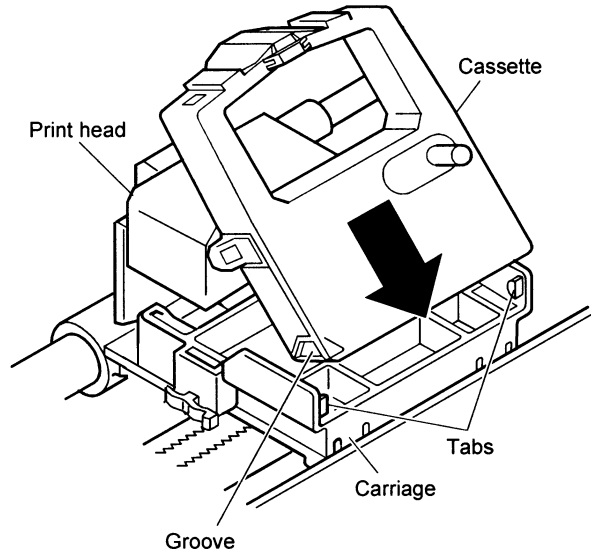


1. Turn the printer off.
2. Disconnect the cash drawer cable to the connectors located on the back of the printer. Contact the Technical Support Department at TransAct Technologies for an adapter.

REMOVING THE RIBBON CASSETTE

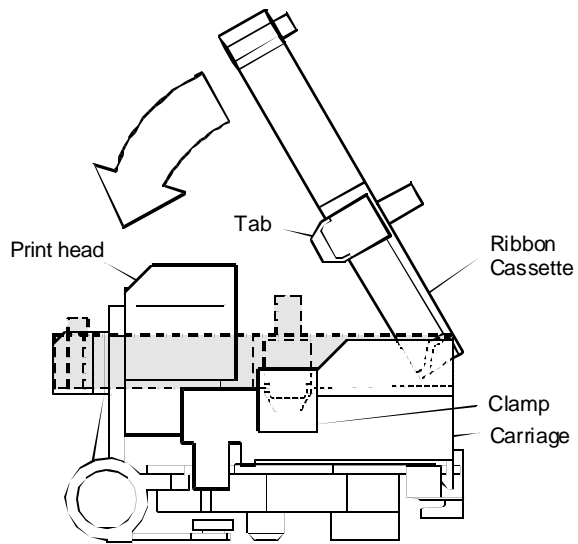
1. Open the cassette cover.
2. Grasp both sides of the cassette. Lift and rock the cassette towards you. Do not pull the cassette straight up.

Installing the Ribbon Cassette

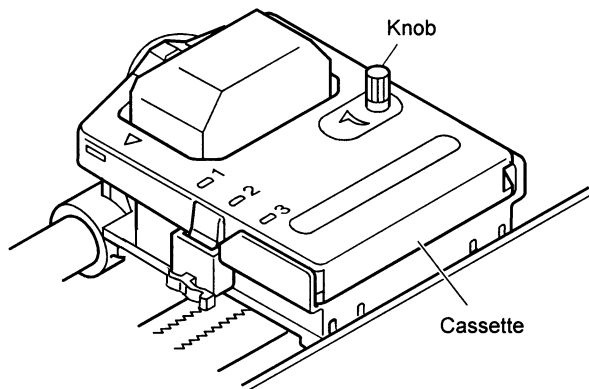


1. Holding the ribbon cassette with the Mylar guide facing away from you, insert the front of the cassette into the carriage.

Note: It is important to fit the front edge of the ribbon cassette into the carriage first. Do not place the ribbon cassette flat on the carriage.



2. Rock the ribbon cassette forward, toward the print head, and then press down on it until the tabs on the cassette snap into the clamps on the carriage.



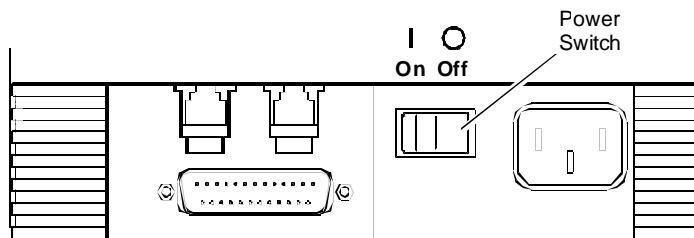
3. Tighten the ribbon by turning the knob on the cassette clockwise.
4. Close the cassette cover.
5. Turn the printer back on (if already installed).

PRINT HEAD

Replace the print head when the characters are consistently misprinting.

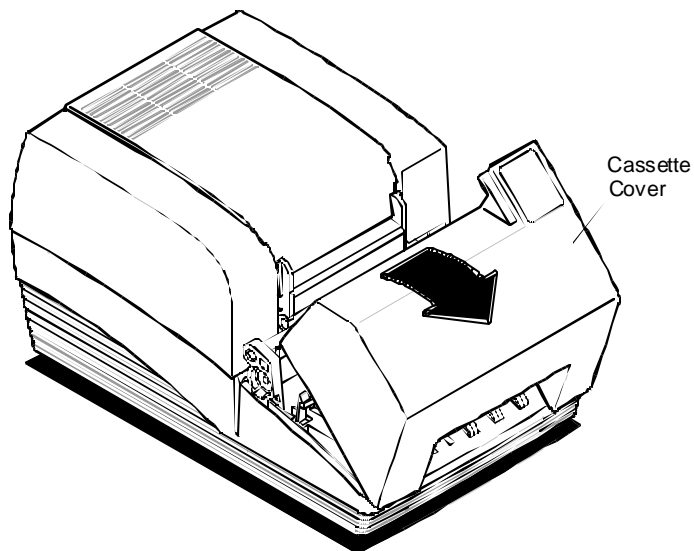
Removing the Used Print Head

Caution: The print head gets very hot.



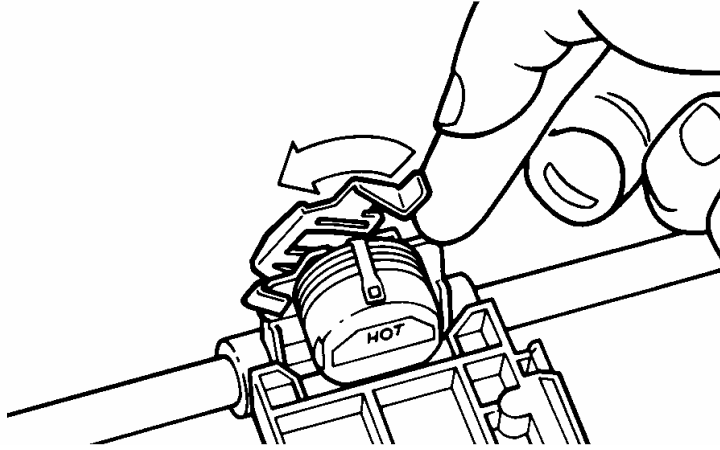
Back of
Printer

1. Turn the printer off, and allow the print head to cool for at least three minutes before replacing it.

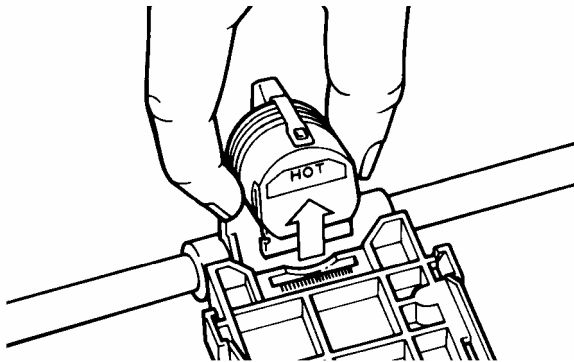


2. Open the cassette cover.
3. Remove the ribbon cassette.

Note: In the following illustrations, the heat sink is not shown for clarity.



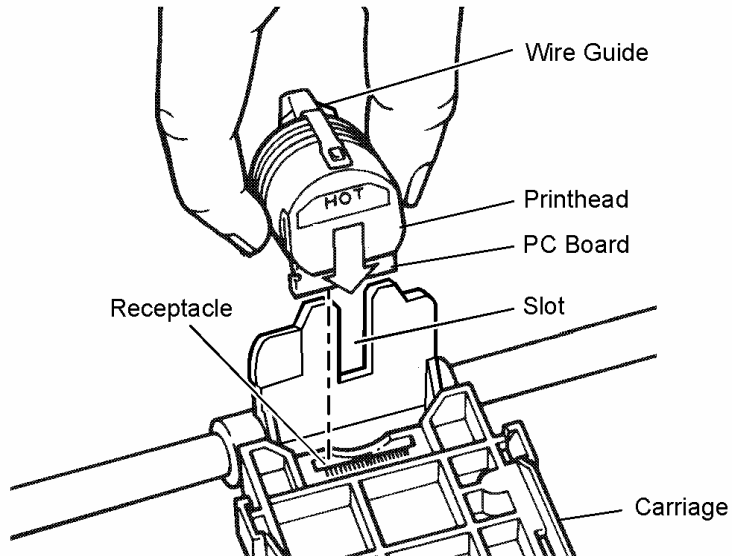
3. Open the print head clip by grasping the tab on the right side of the clip and rotating it from right to left.



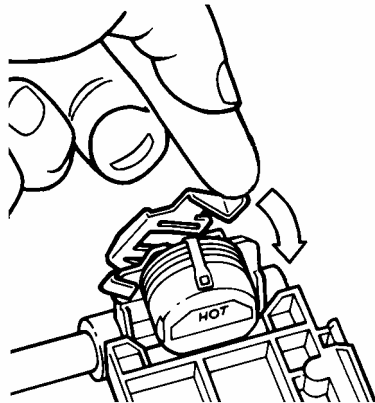
4. Lift the print head straight up out of the carriage.

Installing the New Print Head

Note: In the following illustration, the heat sink is not shown for clarity.



1. Slide the black wire guide on the back of the print head into the slot on the carriage. Make sure the tabs on the wire guide hold the print head against the carriage.
2. Align the PC board on the bottom of the print head with the receptacle on the carriage.
3. Press the print head into the carriage. Do not force the PC board into the receptacle. Make sure it is lined up properly.



4. Close the print head clip by rotating it from left to right and latching it into place.
5. Replace the ribbon cassette, and then close the cassette cover.

INDICATOR LIGHTS

There are three indicator lights: READY, ALARM, and POWER. The READY and POWER lights are green. The ALARM light is red.

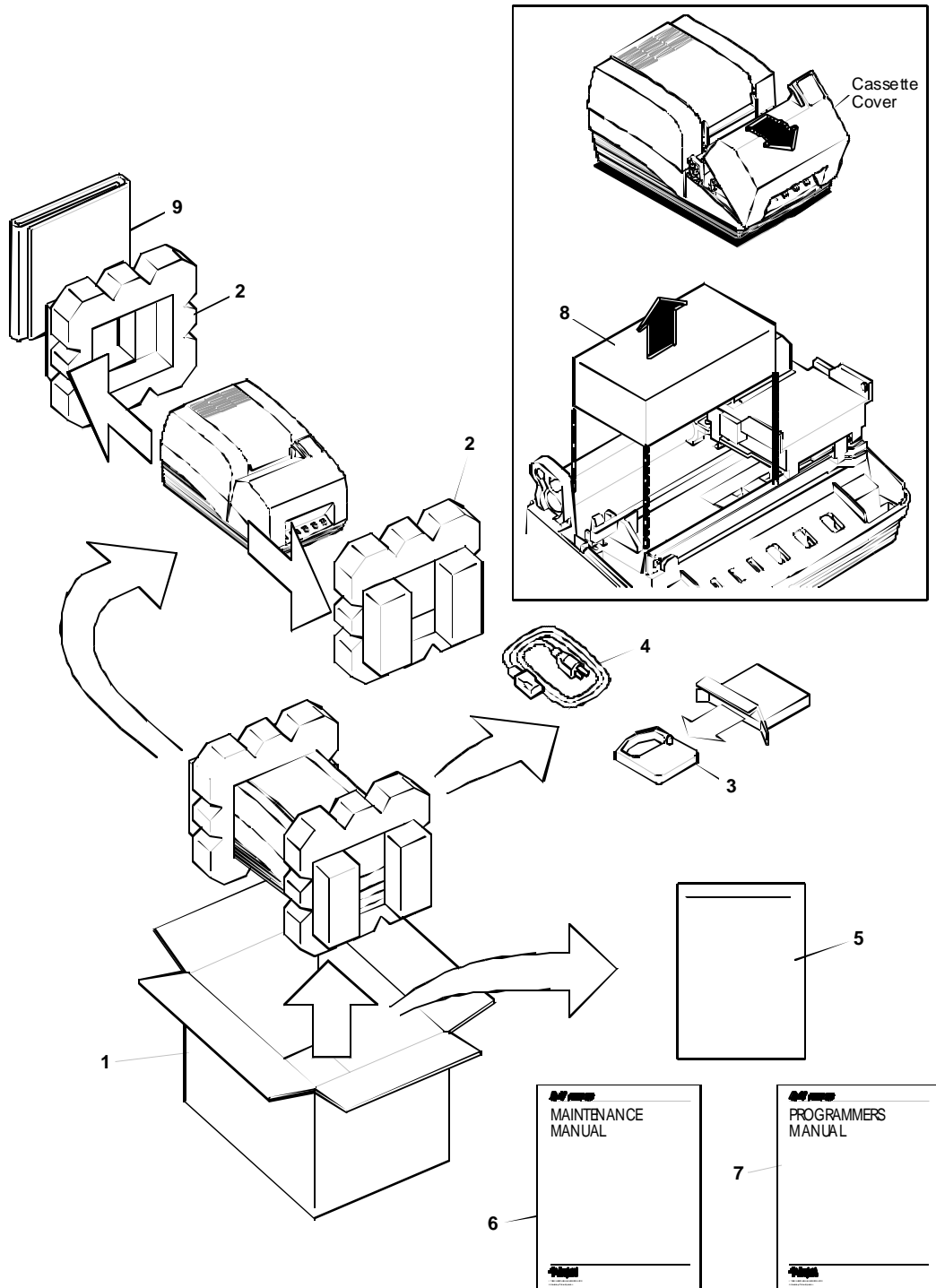
The printer can be in any of the following states:

STATE	READY Green Indicator	ALARM Red Indicator	POWER Green Indicator
1. Ready The printer is ready to receive data and print.	ON	OFF	ON
2. Printer Not Ready (off-line)	OFF	OFF	ON
3. Ready but waiting for a form	ON	Flash	ON
4. Out of Paper	OFF	ON	ON
5. Menu Mode	Flash	OFF	Flash
6. Test Mode	Flash	OFF	ON
7. Printer Fault	OFF	Flash	ON
8. Printer Failure	OFF	OFF	OFF
9. Watchdog Fault (Printer Resets)			

Table 1 LED Indicators

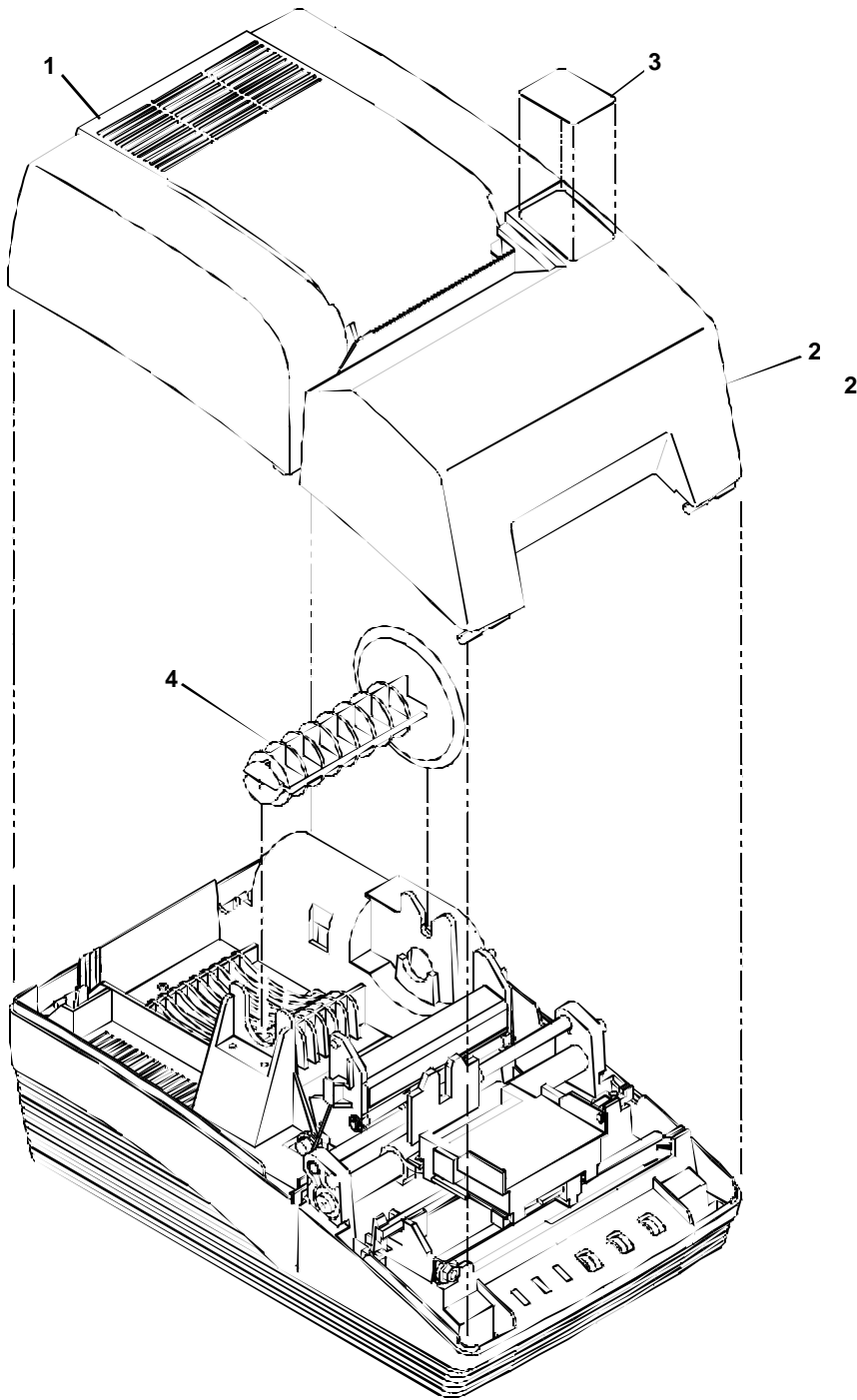
PARTS LISTS

Packing Materials/Publications



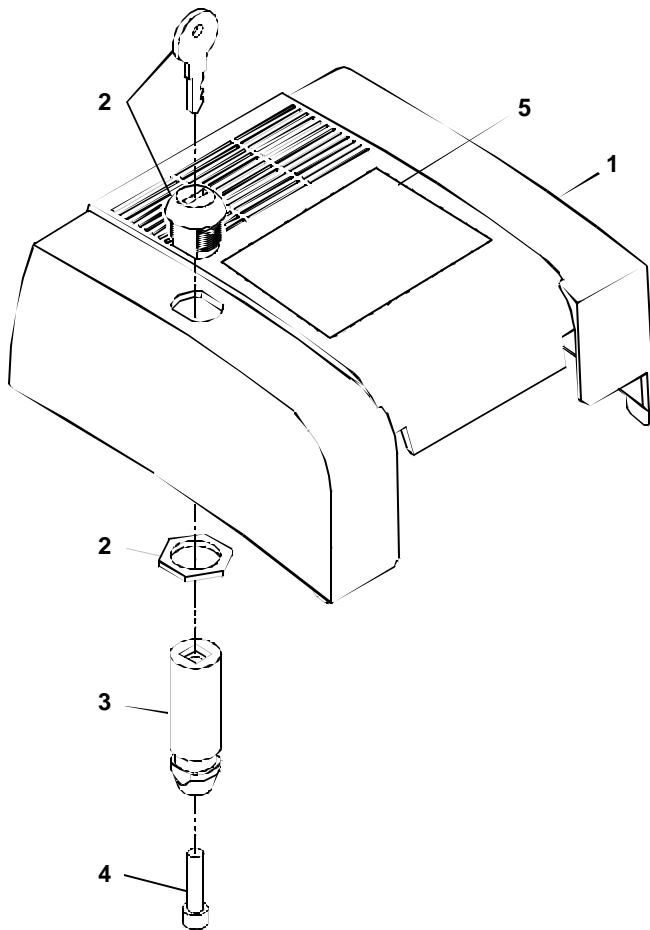
ITEM NO.	PART NO. (History)	QTY	DESCRIPTION
	15-9307	1	Packset M150 Brown
1	90-7579	1	Carton - Brown
2	15-01834	1	Foamset - M150
3	100-7564	1	Ribbon Cassette (Black)
3	100-7858	1	Ribbon Cassette (Purple)
4	06-0561	1	110V Power Supply Cable
4	06-0806	1	230V Power Supply Cable
4	15-00286	1	Cord-Regis Rgt Angle Power
4	98-01162	1	Cord-220V Australian Power
4	98-2173	1	Cord-230V India/So. Africa Power
4	98-7891	1	Cord-UK 240V Power
5	15-9321	1	Publications Kit, (includes the Operator's Guide)
6	15-9314	1	Maintenance Manual
7	100-7959	1	Programmer's Manual
8	90-7568	1	Retainer - Print head
9	15-9712	1	Spacer - M150 Pack

Printer Assembly



ITEM NO.	PART NO. (History)	QTY	DESCRIPTION
1			See 'Paper Cover' on page 26.
2			See 'Cassette Cover without Knife' on page 27.
2			See 'Cassette Cover with Knife' on page 28.
3	15-03365 (15-9441)	1	Label (Ithaca – Lt. Tan)
3	15-9376	1	Label (UTC)
3	15-9377	1	Label (OKI Latin)
3	15-9723	1	Label (OKI)
3	15-9902	1	Label (Telecom)
3	15-05142	1	Label (Ithaca – Dk. Gray)
4	90-02026 (90-6415)	1	Spindle - Take-up

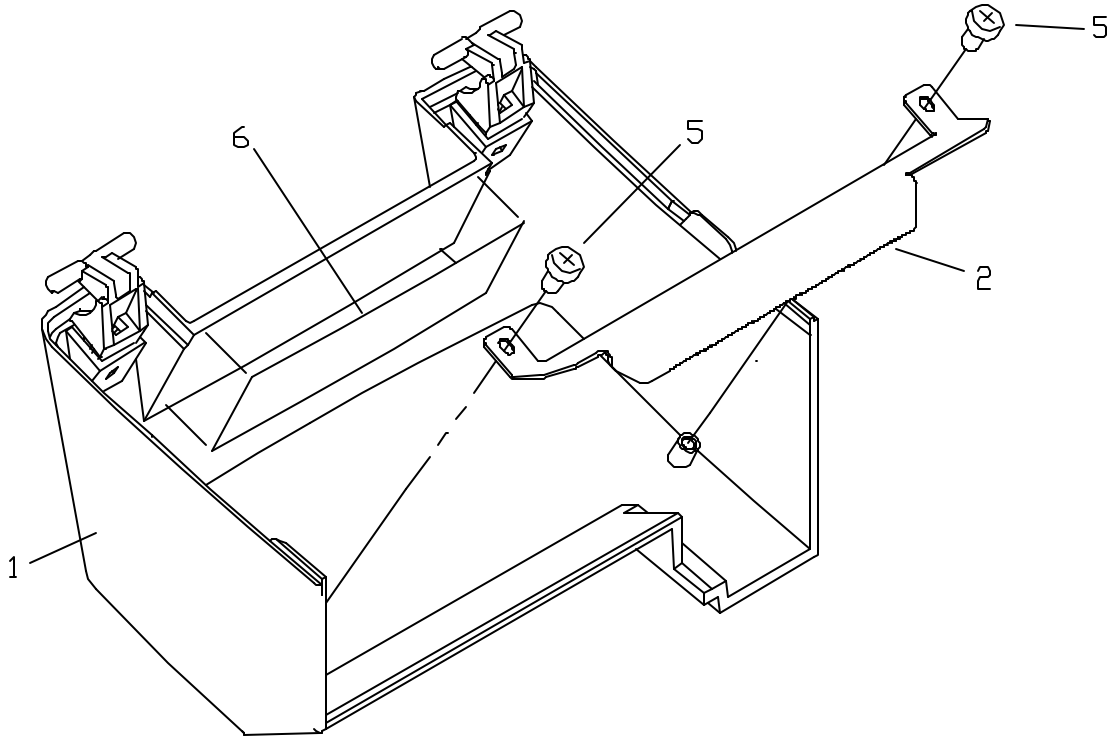
Paper Cover



ITEM NO.	PART NO. (History)	QTY	DESCRIPTION
1	15-8260	1	Cover - Standard Paper (Lt. Tan)*
1	15-9355	1	Cover - Knife Paper (Lt. Tan)*
1	15-9340	1	Cover - Paper With Journal Lock (Lt. Tan)*
1	15-9341	1	Cover - Paper With Journal Lock (Dk. Gray)*
2	98-1284	1	Lockset
3	06-1269	1	Extension Journal Lock
4	98-0707	1	Screw - ¼ x 28 x 1"
5	15-9405	1	Label - Paper loading without knife but with bail
5	15-9707	1	Label - Paper loading with knife and bail
5	15-9946	1	Label - Paper loading without knife and bail
5	15-9947	1	Label - Paper loading with knife without bail

*When ordering a Paper Cover Assembly, also order a Paper Loading Label (Item 5).

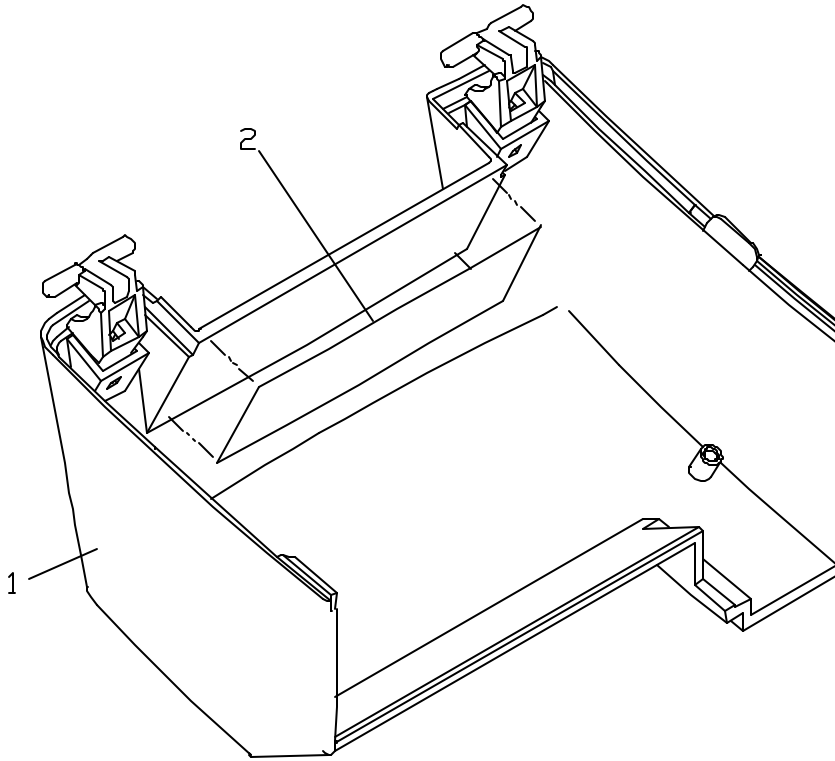
Cassette Cover without Knife



ITEM NO.	PART NO. (History)	QTY	DESCRIPTION
	15-01495	1	Cover - Cassette Standard Assembly (Lt. Tan)*
	15-01496	1	Cover - Cassette OKI Europe Assembly (Lt. Tan)*
	15-01497	1	Cover - Cassette Standard Assembly (Dk. Gray)*
1	15-8252	1	Cover - Hinged Cassette (Lt. Tan)
1	R15-01329	1	Cover - OKI Europe Cassette (Lt. Tan)
1	15-8262 (15-8254)	1	Cover - Hinged Cassette (Dk. Gray)
2	15-8077	1	Tear Bar
5	98-2052	2	Screw - #6-20 x 0.375 PHPS PHD
6	15-9706	1	Label - Cassette Loading

*When ordering a Cassette Cover Assembly, also order a Cassette Label (Item 6).

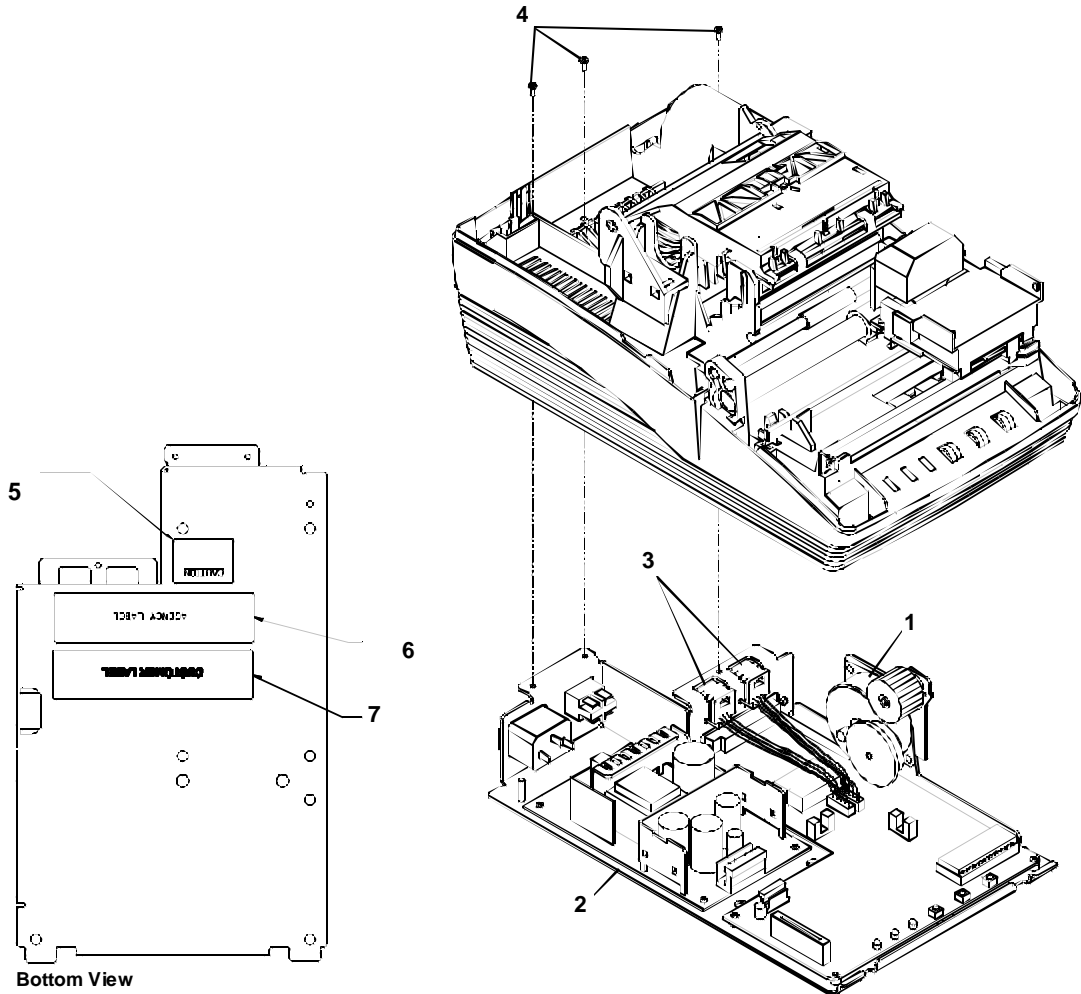
Cassette Cover with Knife



ITEM NO.	PART NO. (History)	QTY	DESCRIPTION
	15-01490	1	Cover - Knife Cassette Assembly (Lt. Tan)*
	15-01493	1	Cover - Knife Cassette Assembly (Dk. Gray)*
1	15-01485	1	Cover - Knife Cassette (Lt. Tan)
1	15-01488	1	Cover - Knife Cassette (Dk. Gray)
2	15-9776	1	Label - Cassette Loading

*When ordering a Cassette Knife Cover Assembly, also order a Cassette Label (Item 2).

Electronic Base



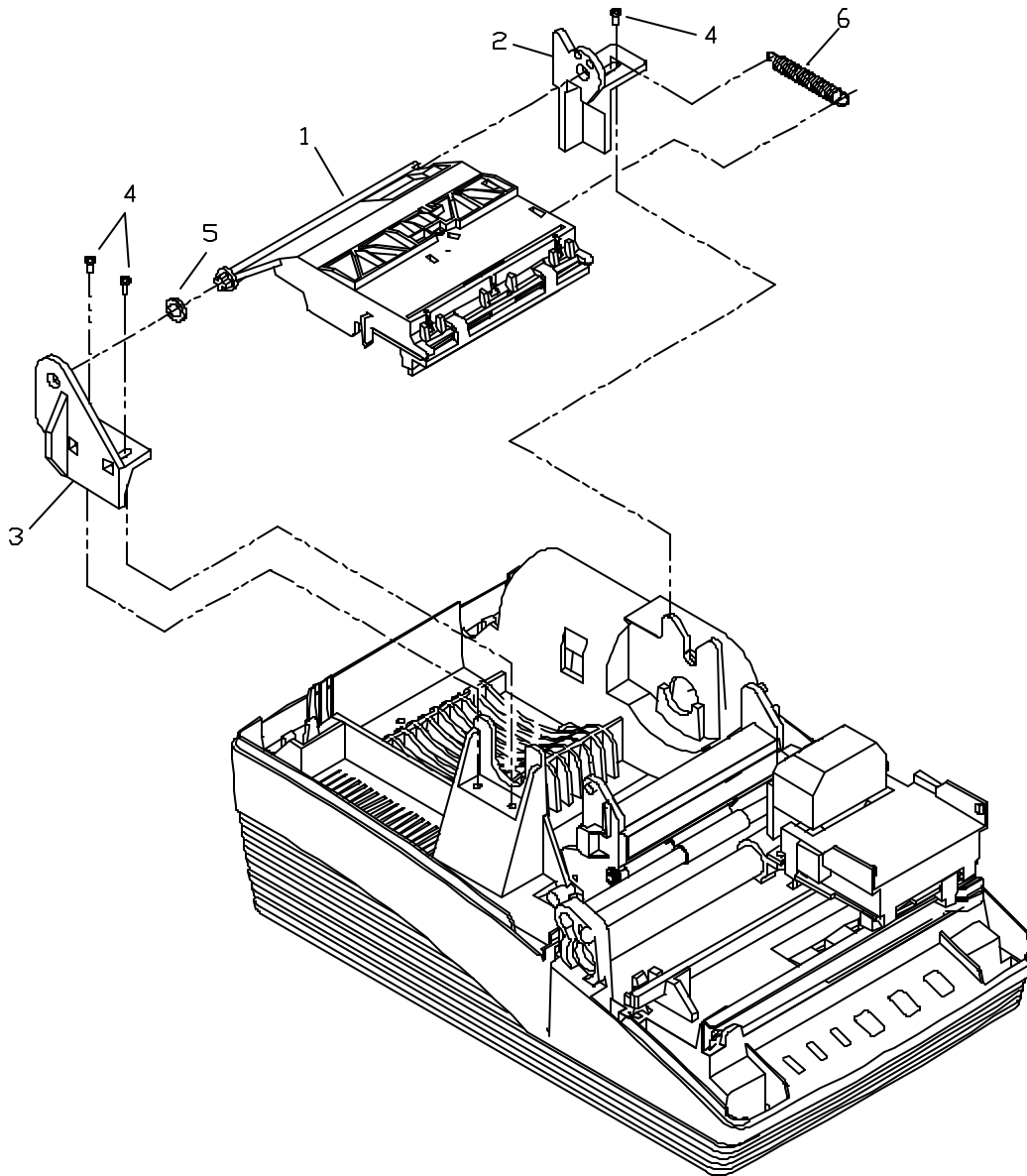
Bottom View

ITEM NO.	PART NO. (History)	QTY	DESCRIPTION
1			See 'Error! Reference source not found.' on page Error! Bookmark not defined..
2			See 'Error! Reference source not found.' on page Error! Bookmark not defined..
3	R15-9780	1	Cash Drawer Harness (Standard)
3	R15-9913	1	Cash Drawer Harness (Epson)
3	15-01106	1	Cash Drawer Harness (Star)
4	521-9880020	3	Screw - #4-40 x 0.25 SEMS PHPS PHD
5	90-9933	1	Label - Caution (Epson)
5	90-9934	1	Label - Caution (Ithaca)
5	90-9935	1	Label - Caution (STAR)
6	98-7976*	1	Label - Agency

7	98-7976*	1	Label - Optional Secondary
---	----------	---	----------------------------

* Not available as a spare part

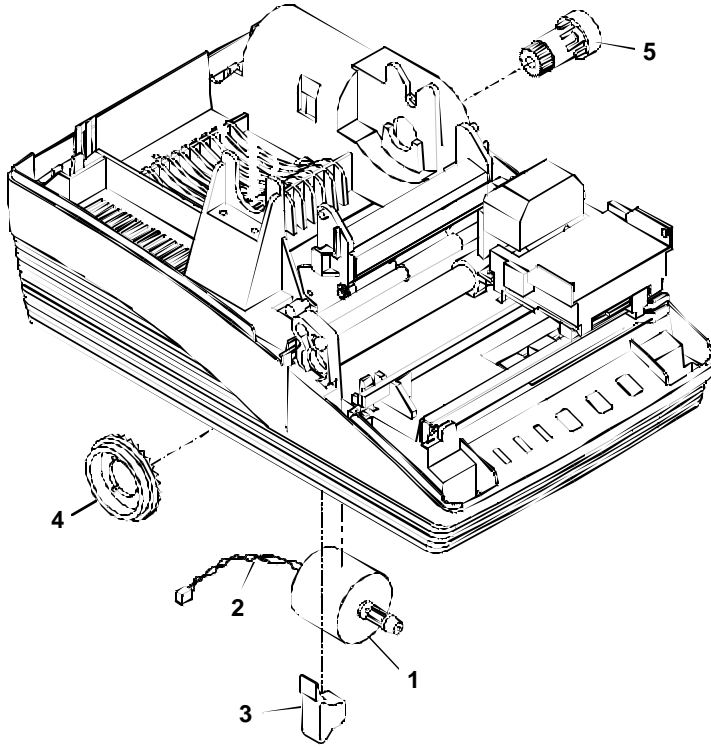
Cutter



ITEM NO.	PART NO. (History)	QTY	DESCRIPTION
1	R15-02028 (15-01818)	1	See 'Error! Reference source not found.' on page Error! Bookmark not defined..
2	15-8052	1	Mount - Right Knife Bracket
3	15-8051	1	Mount - Left Knife Bracket
4	98-01154	3	Screw - #4 Plastic Thread Forming

5	15-8124	1	Spacer - Knife
6	15-9967	1	Spring-Detent

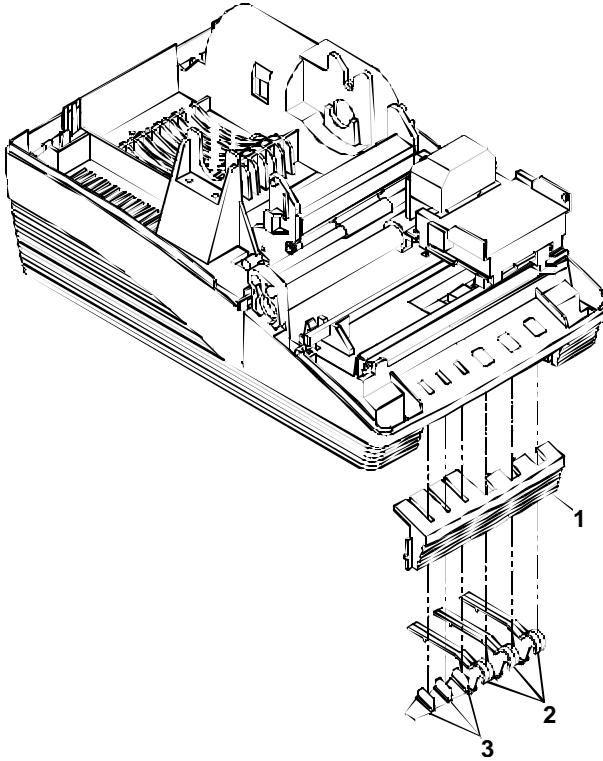
Take-up Motor Assembly



ITEM NO.	PART NO. (History)	QTY	DESCRIPTION
1	R15-9311	1	Assembly - Take-up Motor (includes Harness)
2	15-8306*	1	Harness - Take-up Drive
3	15-02209	1	Insert - Take-up Motor
4	15-02033 (15-8206)	1	Gear - Take-up
5	15-8210	1	Shaft - Take-up Gear

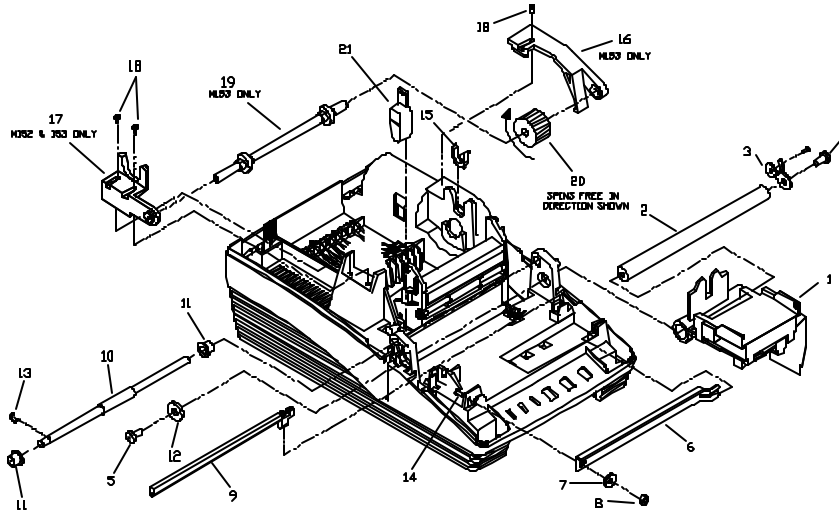
* Not available as a spare part

Switch Assembly and Light Pipes



ITEM NO.	PART NO. (History)	QTY	DESCRIPTION
1	15-8030	1	Base - Filler (Light Tan)
1	15-8032	1	Base – Filler (Dk. Gray)
2	15-8040	3	Button
3	15-8050	3	Light pipe - Keypad

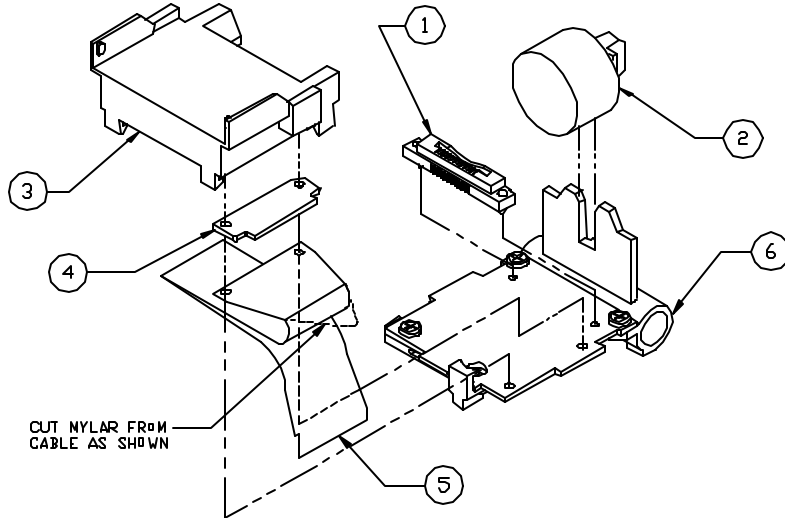
Print Mechanism Assembly



ITEM NO.	PART NO. (History)	QTY	DESCRIPTION
1	15-9305*	1	See 'Carriage Assembly' on page 34.
2	15-8068	1	Shaft - Carriage
3	15-9966	1	Link - Ground
4	98-2112	1	Screw - M4x8 mm PHPS PHD SEMS
5	98-8130	1	Screw - #4-40 x 0.25 PLT PHPS
6	15-01826	1	Rail - Carriage
7	98-2014	1	Washer - M3 Flat
8	98-0621	1	Nut - M3 Hex with Lockwasher
9	R90-6056	1	Rack - Space
10	15-01186 (15-03240)	1	Shaft - Feed
11	98-8073	2	Bearing - Flanged Nyliner
12	98-9324	1	Washer - Flat
13	520-9800104	1	Retainer - C-Ring 0.23 diameter
14	98-0897	1	Screw - M3x8mm PHPS PHD
15	15-01825	1	Retainer - Journal
16	15-02011	1	Bearing-Right Forms Compensation
17	15-02010	1	Bearing-Left Forms Compensation
18	98-01154	3	Screw-#4 Plastic Thread Forming
19	15-02017	1	Shaft-Forms Compensation
20	15-02375 (15-8108)	1	Assembly-Clutch Gear
21	15-02382	1	Retainer-Forms Comp

* Not available as a spare part

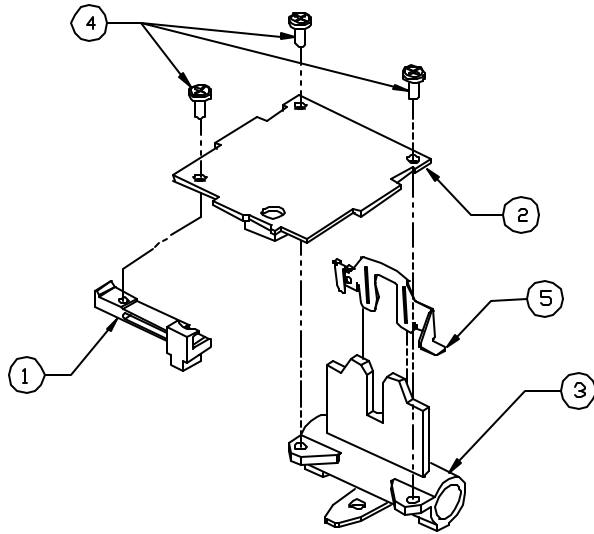
Carriage Assembly



ITEM NO.	PART NO. (History)	QTY	DESCRIPTION
	15-9305*	1	Assembly - Carriage
1	R06-0574	1	Connector - Print head
2	R90-7337	1	Print head
3	R15-01837	1	Assembly - Ribbon Feed Gear
4	R90-7339	1	Rubber - Contact Pressure
5	R90-7340	1	Cable - Head
6	90-7431*	1	Assembly - Carriage Motor

* Not available as a spare part

Carriage Motor Assembly



ITEM NO.	PART NO. (History)	QTY	DESCRIPTION
1	R06-0575	1	Slider - OKI
2	98-7280	1	Assembly - Space Motor
3	R90-7341	1	Roller - Carriage
4	R90-7342	3	Screw - Carriage
5	R06-0571	1	Clamp - Print head