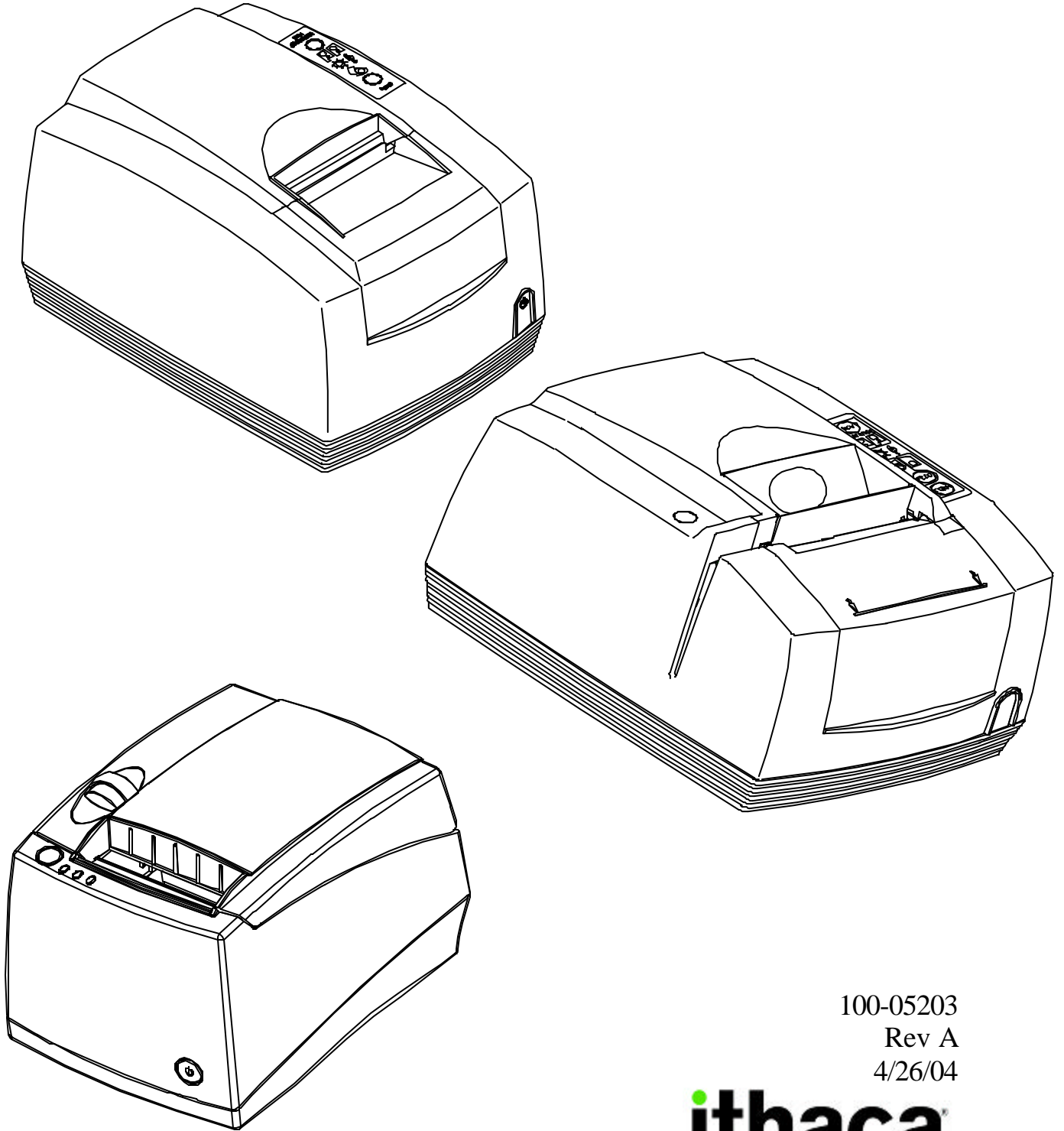


***Ithaca iTherm™, POSjet® & BANKjet®
Printers' Ethernet Adapters***

Setup Guide



100-05203
Rev A
4/26/04

ithaca
a product of TRANSACT



Setup Guide

Contents

Contents	2
Ethernet Connection.....	3
Configuration.....	4
Locator Program	4
Installation.....	4
Using Locator.....	4
Using a Web Browser	7
Printer Identification Page	8
Printer Address Page	9
Printer Protocols Page	10
Printer Security Page.....	11
Adapter Firmware Update Page	12
The Reset Button.....	13

Setup Guide**Ethernet Connection**

Connecting the printer to the network is simple.

- Using a standard CAT5 Ethernet cable, connect one end to the RJ45 connector on the Wired Ethernet Adapter. Connect the other end to an open Ethernet port in your Ethernet hub, switch or router.
- Connect power to the printer and turn it on.

The printer should then print its IP address, which will be used to configure the Wired Ethernet Adapters.

Note: If the printer does not print the IP address within two minutes, press the recessed button on the Wired Ethernet Adapter for five (5) seconds and then release. This will reset the Wired Ethernet Adapter, not the printer, back to its factory defaults. The IP address should then be printed.

Configuration

The Wired Ethernet Adapter is ready to be configured once the printer prints the IP address.

Locator Program

TransAct provides a Windows™ program to allow Ithaca Ethernet devices to be located and configured on a local subnet.

The Locator program allows the system administrator to find all Ithaca Wired Ethernet Adapters on the local network regardless of the IP addresses assigned to each adapter.

Installation.

The program is available on the TransAct Web site (www.transact-tech.com) and is downloaded as a compressed ZIP file. The locator program consists of two files. Locator.exe and UbiComUCP.dll. These files must exist in a single directory and be run from that directory. UnZip the files into any convenient directory and run Locator.exe from that directory.

Using Locator

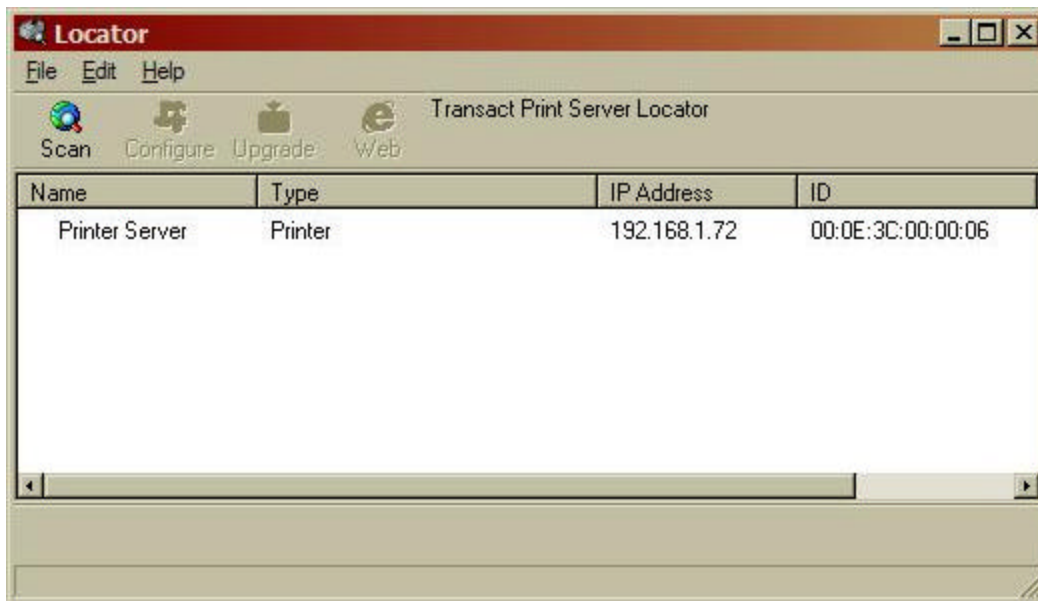


Figure 1 Locator Scan

Locator will scan the local subnet and locate any Ithaca printers connected to that network.

When all printers are found, you may select a printer by clicking on any printer in the list.

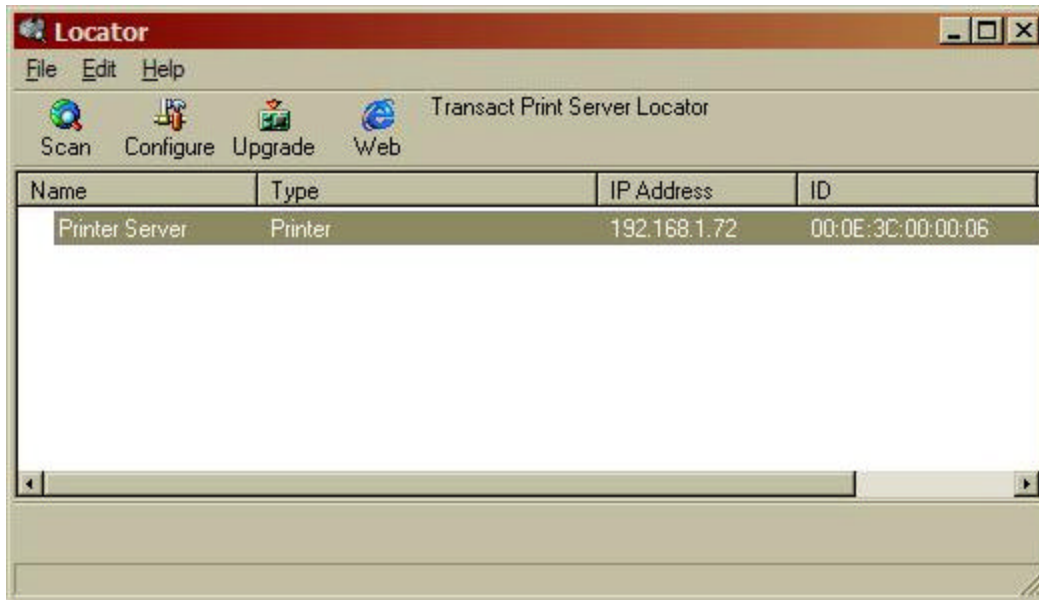


Figure 2 Locator Device Selection

Once selected the Adapter can be configured, updated, or you can activate your web browser to configure the printer.

To configure the printer directly form the Locator program, click the Configure button.

NOTE: the locator program bypasses the printer security feature.

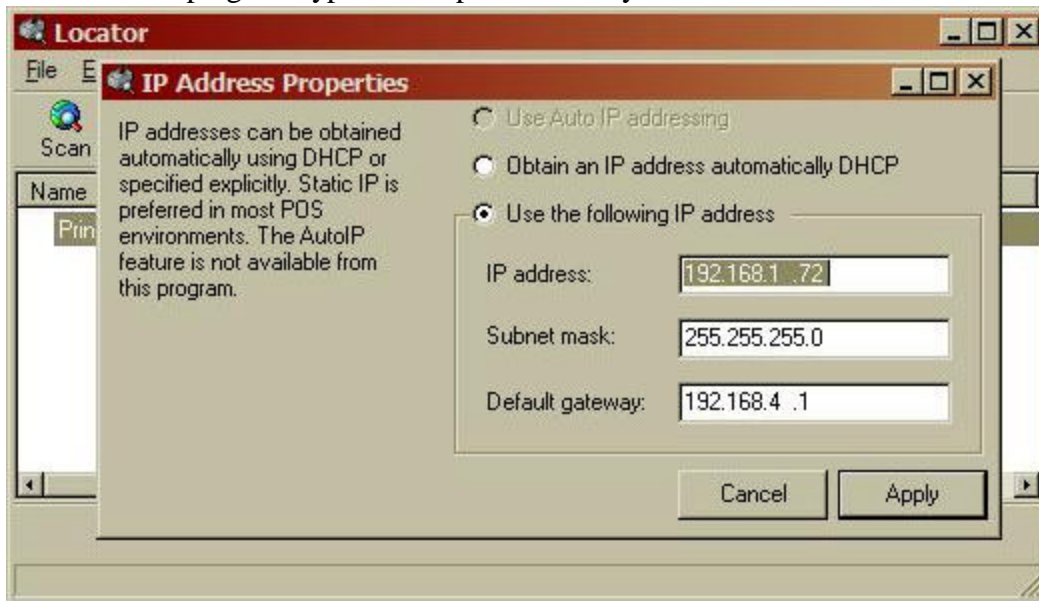


Figure 3 Locator Configuration

To update the firmware in the adapter, select Upgrade.

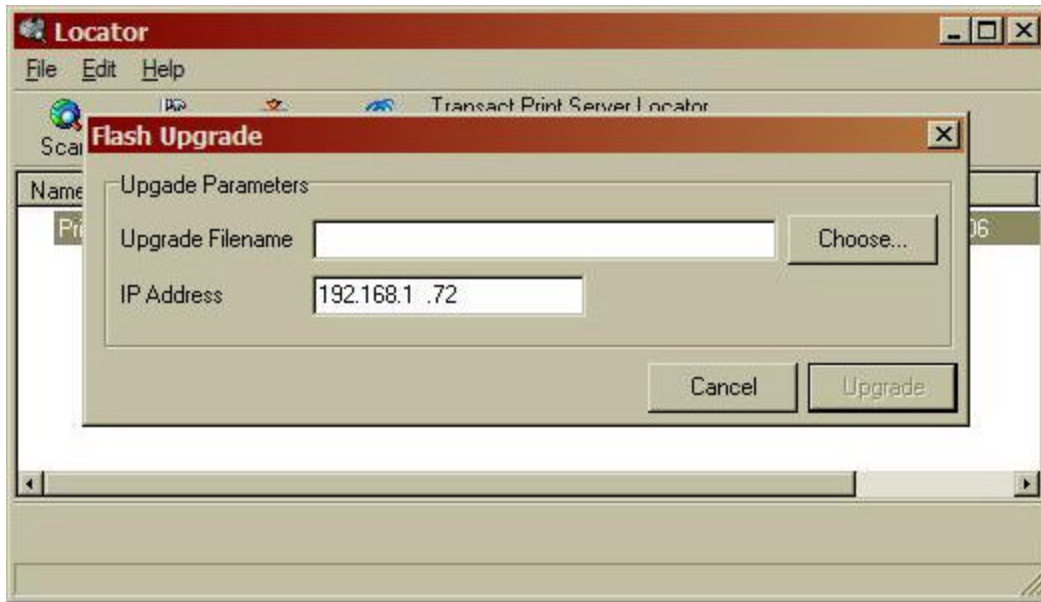


Figure 4 Adapter firmware upgrade

Browse your system for the upgrade 100-05059-xxx.bin file and select Upgrade.

Using a Web Browser

Using a web browser type in the printer's IP address in the browser's Address box.

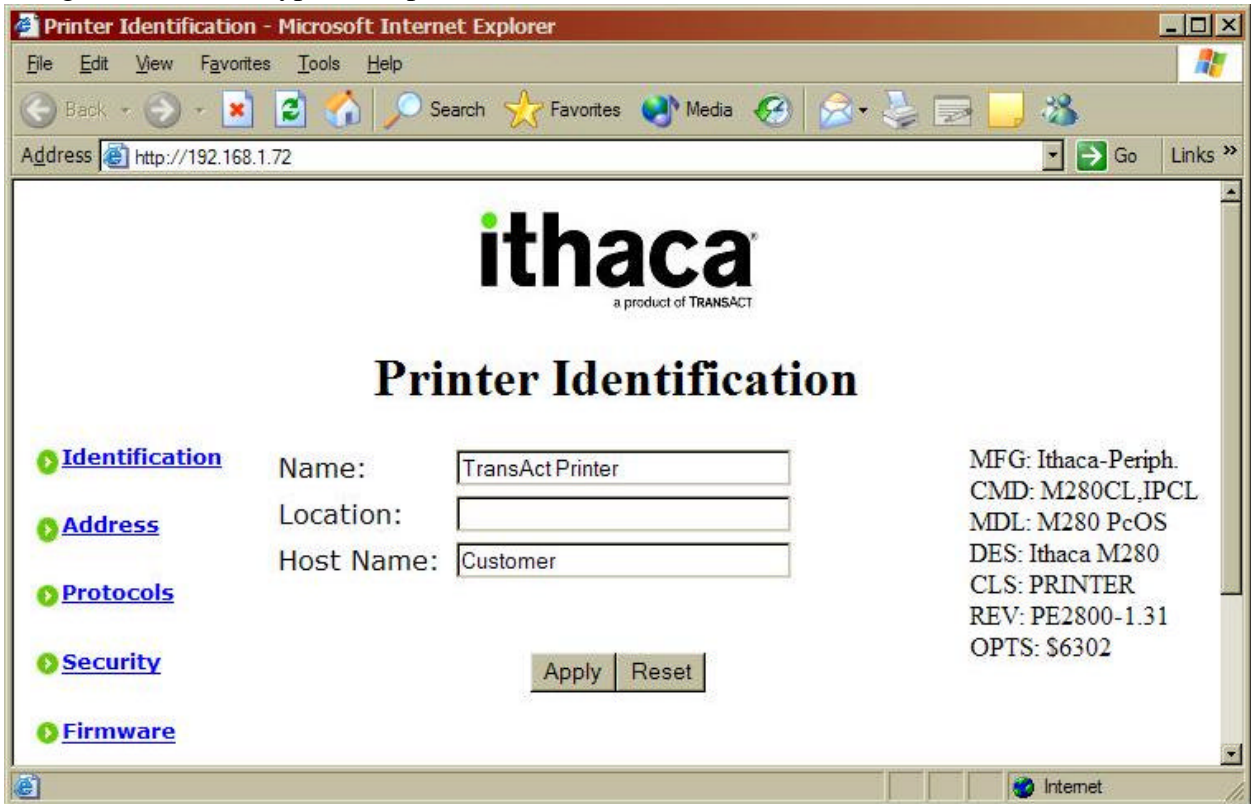


Figure 5 Printer Identification

The following web pages are available to configure the Wired Ethernet Adapter:

Identification	This page maintains names associated with the printer. These names are helpful for network management.
Address	This page defines the printer's address on the network.
Protocols	This page defines which standard protocols the adapter will use to communication with the network computers.
Security	This pages provides a means to protect the Wired Ethernet Adapter's configuration from inadvertent change.
Firmware	Provides the means to update the firmware in the Wired Ethernet Adapter as it is made available from TransAct.

Printer Identification Page

ithaca
a product of TRANSACT

Printer Identification

- ▶ [Identification](#)
- ▶ [Address](#)
- ▶ [Protocols](#)
- ▶ [Security](#)
- ▶ [Firmware](#)

Name:

Location:

Host Name:

MFG: Ithaca-Periph.
CMD: M280CL,IPCL
MDL: M280 PcOS
DES: Ithaca M280
CLS: PRINTER
REV: PE2800-1.31
OPTS: \$6302

The Printer Identification page provides a means to give the printer a name meaningful to its application and position in the network. The Name and Location information will be retained by the Wired Ethernet Adapter solely to support the system manager in identifying and locating resources. The Host Name is provided to the DHCP server, if AutoIP or DHCP is enabled on the Printer Address Page, to provide automatic name identification of the printer on some networks.

When you are satisfied with the values entered, press the Apply button to save the values.

Printer Address Page

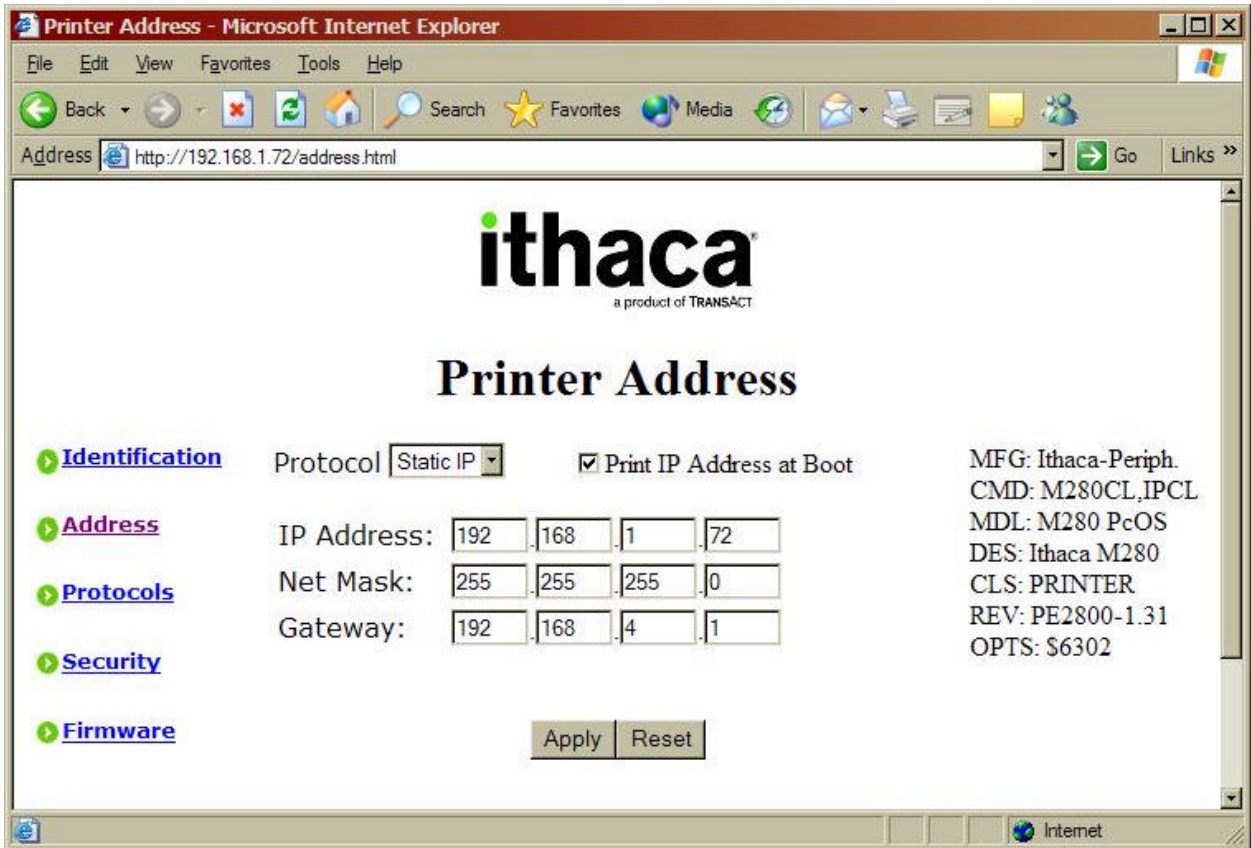


Figure 6 Printer Address

The Printer Address page provides for the proper addressing of the printer on the network. By default the Wired Ethernet Adapter automatically obtains an address from a DHCP server or creates a random address consistent with the current network. It then prints this address on the printer so that the printer may be accessed. However, because the address assigned to the printer may change every time that the printer is rebooted, it is usually best to assign a fixed IP address to the printer, known as a Static IP address. The Static IP address must be selected consistent with the rest of the network. It must be unique and within the same subnet as the remainder of the network.

When you are satisfied with the values entered, press the Apply button to save the values.

Printer Protocols Page

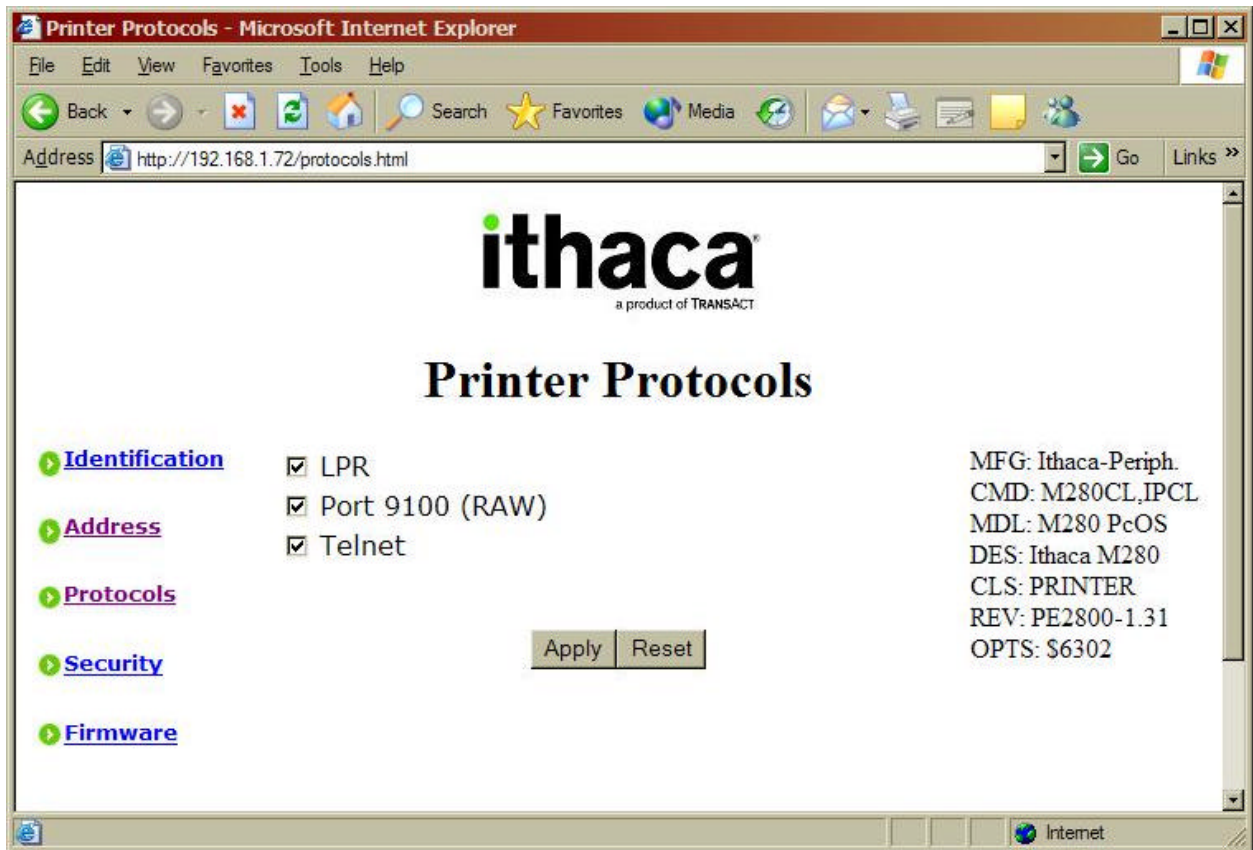


Figure 7 Printer Protocols

The Printer Protocol page enables or disables the protocols the Wired Ethernet Adapter will accept from a computer. Three protocols are supported, Line Printer Protocol (LPR), Port 9100 (RAW) and Telnet. In most cases, leaving all protocols enabled is best.

When you are satisfied with the values entered, press the Apply button to save the values.

Printer Security Page



Figure 8 Printer Security

The Printer Security page allows the configuration of the Wired Ethernet Adapter to be protected by a password from accidental change. By default, a user name and password are not necessary to modify the Wired Ethernet Adapter configuration. However, it is recommended that upon completion of the configuration that a username and password be assigned to the adapter to minimize the possibility of an unauthorized person changing the configuration.

When the username and password have been enabled, users will be prompted to supply the username and password before allowing access to the configuration pages. The Enable Authentication box must be checked in order for the username and password to take effect.

When you are satisfied with the values entered, press the Apply button to save the values. These values will take effect immediately and if authentication has been enabled, further access to the configuration web pages will require correct entry of the username and password.

Adapter Firmware Update Page



Figure 9 Adapter Firmware Update

The Adapter Firmware Upgrade Page provides a means to upgrade the Wired Ethernet Adapter's firmware in the field. For details about upgrading the Wired Ethernet Adapter's firmware, see the documentation accompanying upgrades provided by TransAct.

The Reset Button

The reset button provides three functions.

1. Resetting the print server.
2. Printing the print server configuration.
3. Resetting the print server configuration to the default.

Briefly pressing and releasing the reset button for less than 1 second will reset the print server. This will clear all pending print in the buffers and restart the adapter.

Briefly pressing the reset button for about 1 second, releasing it for about 1 second and then pressing and holding it will reset the adapter and force it to print its configuration.

Pressing and holding the reset button for about 5 seconds, will reset the adapter's configuration to factory defaults.