

TRANSACT

Windows Driver Installation Guide

v 3.0.3.0

Windows Driver Installation Guide

Please click the Windows OS below to jump to the instructions for your specific Windows OS:

- [Windows 10](#) - Printer Driver Installation Instructions – Page 3
- [Windows 8](#) - Printer Driver Installation Instructions – Page 19
- [Windows 7](#) - Printer Driver Installation Instructions – Page 36

TRANSACT

Visual Quick Start Guide

Printer Driver Install on Windows 10

Printer Driver Installation on Windows 10 (Add Printer)

Setting the 'USB Mode' to 'USB Printer Only'

(this applies to printers with a USB Interface only)

If your printer has a USB Interface, and it is connected to your PC using a USB cable, before installing the printer through the Add Printer Wizard on your Windows 10 PC, please change the "USB Mode" option in the internal configuration of the printer to "USB Printer Only". NOTE: Does not apply for the Model 9000 and Epic 3000 printers.

Please follow the steps below to set the "USB Mode" option in the internal configuration to "USB Printer Only":

- 1.) Unplug the USB cable from the printer and PC.
- 2.) Verify the USB Mode setting is set to USB PRINTER ONLY.
 - a.) Print out the internal configuration settings:
 - b.) Click on the link: <https://www.transact-tech.com/service-and-support>
 - c.) Click your Printer Model.
 - d.) In the Quick Reference section, see Manual Configuration.
 - e.) Follow these instructions to print out the configuration settings, change the settings, and save your changes.
- 3.) **IMPORTANT:** Once you change the "USB Mode" to "USB Printer Only" and save your changes, you **MUST** unplug the power cord physically from the printer for at least 1 minute.
- 4.) Plug the power cord back into the printer.
- 5.) Reboot Windows 10 PC.
- 6.) Verify the printer is on and ready, no error LEDs.
- 7.) Connect the USB cable to the printer.
- 8.) Plug the other end of the USB cable into the PC.
- 9.) Windows 10 should recognize and assign a USB port to the printer.
- 10.) Proceed to the next page to install the Windows drivers as you normally would selecting the USB port assigned by Windows.

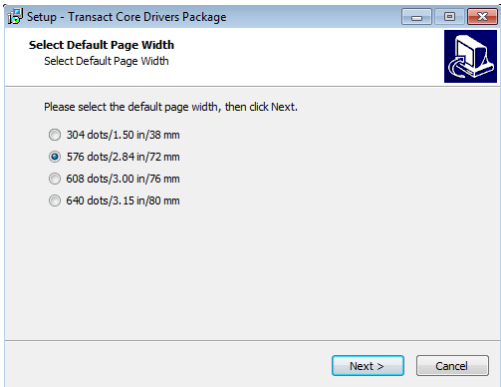
Printer Driver Installation on Windows 8 (Add Printer)

Download Printer Driver from Transact Web Site

www.transact-tech.com

1. First make sure your printer is powered on and connected to your PC. Then, download our Windows 10 driver for your respective printer model by going to our Service & Support section on our website at <http://www.transact-tech.com/service-and-support>, then click on your printer model, and under “Drivers” download the Windows Driver for Windows 7, Windows 8, Windows 8.1, and Windows 10” at the top of the page.
2. Click on the Download link on the right hand side, and then click the Save button, and save the .zip file to your Desktop.
3. On your Desktop you will then see the .zip file for the driver for your respective printer model. Right click this file, and unzip and extract the driver, then run the installer, “200-15480 TransactCoreSetup.exe”. See next page for driver install screenshots then follow the installation guide to add the printer.

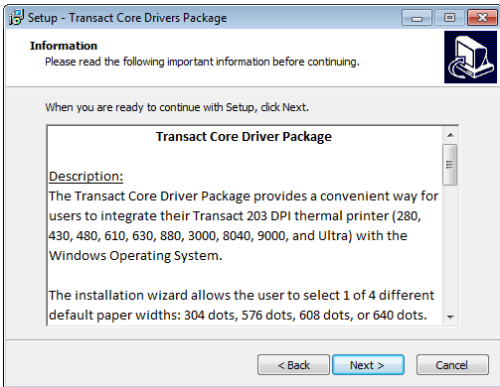
Printer Driver Installation on Windows 7 (Add Printer)

- 

1 **Setup - Transact Core Drivers Package**
Select Default Page Width
Select Default Page Width

Please select the default page width, then click Next.

 - ☐ 304 dots/1.50 in/38 mm
 - ☒ 576 dots/2.84 in/72 mm
 - ☐ 608 dots/3.00 in/76 mm
 - ☐ 640 dots/3.15 in/80 mm

Next > Cancel
- 

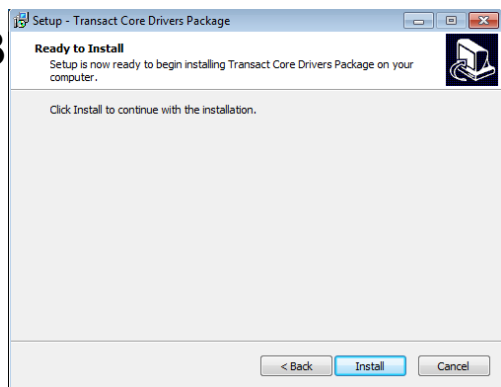
2 **Setup - Transact Core Drivers Package**
Information
Please read the following important information before continuing.

When you are ready to continue with Setup, click Next.

Transact Core Driver Package

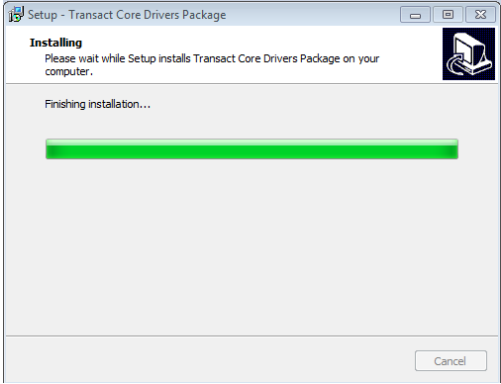
Description:
The Transact Core Driver Package provides a convenient way for users to integrate their Transact 203 DPI thermal printer (280, 430, 480, 610, 630, 880, 3000, 8040, 9000, and Ultra) with the Windows Operating System.

The installation wizard allows the user to select 1 of 4 different default paper widths: 304 dots, 576 dots, 608 dots, or 640 dots.

< Back Next > Cancel
- 

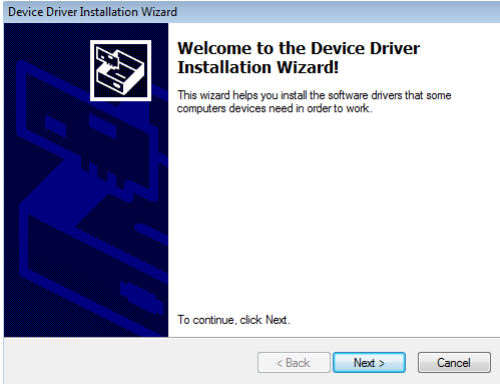
3 **Setup - Transact Core Drivers Package**
Ready to Install
Setup is now ready to begin installing Transact Core Drivers Package on your computer.

Click Install to continue with the installation.

< Back Install Cancel
- 

4 **Setup - Transact Core Drivers Package**
Installing
Please wait while Setup installs Transact Core Drivers Package on your computer.

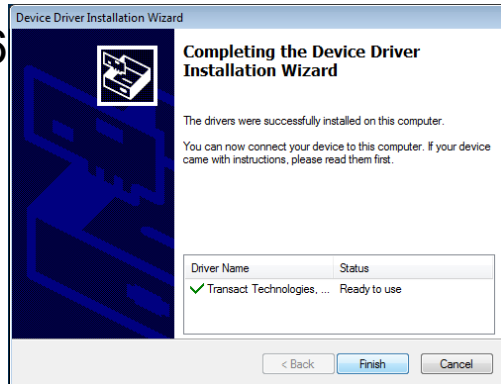
Finishing installation...

Cancel
- 

5 **Device Driver Installation Wizard**
Welcome to the Device Driver Installation Wizard!

This wizard helps you install the software drivers that some computers devices need in order to work.

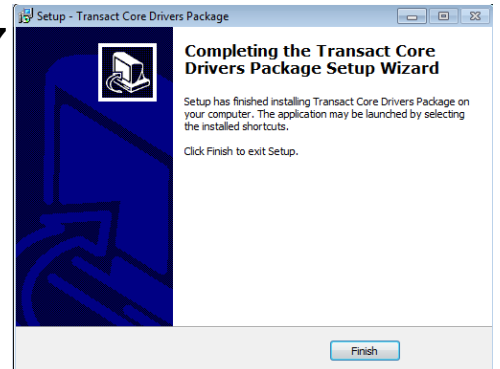
To continue, click Next.

< Back Next > Cancel
- 

6 **Device Driver Installation Wizard**
Completing the Device Driver Installation Wizard

The drivers were successfully installed on this computer.
You can now connect your device to this computer. If your device came with instructions, please read them first.

Driver Name	Status
✓ Transact Technologies, ...	Ready to use

< Back Finish Cancel
- 

7 **Setup - Transact Core Drivers Package**
Completing the Transact Core Drivers Package Setup Wizard

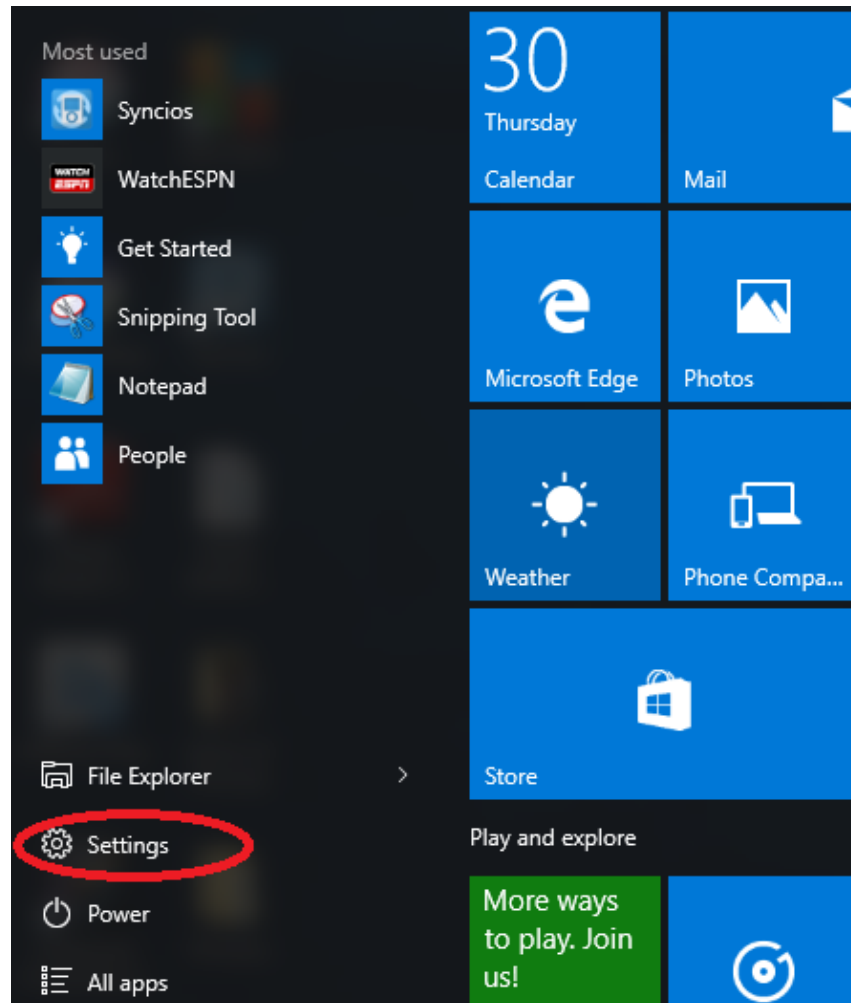
Setup has finished installing Transact Core Drivers Package on your computer. The application may be launched by selecting the installed shortcuts.

Click Finish to exit Setup.

Finish

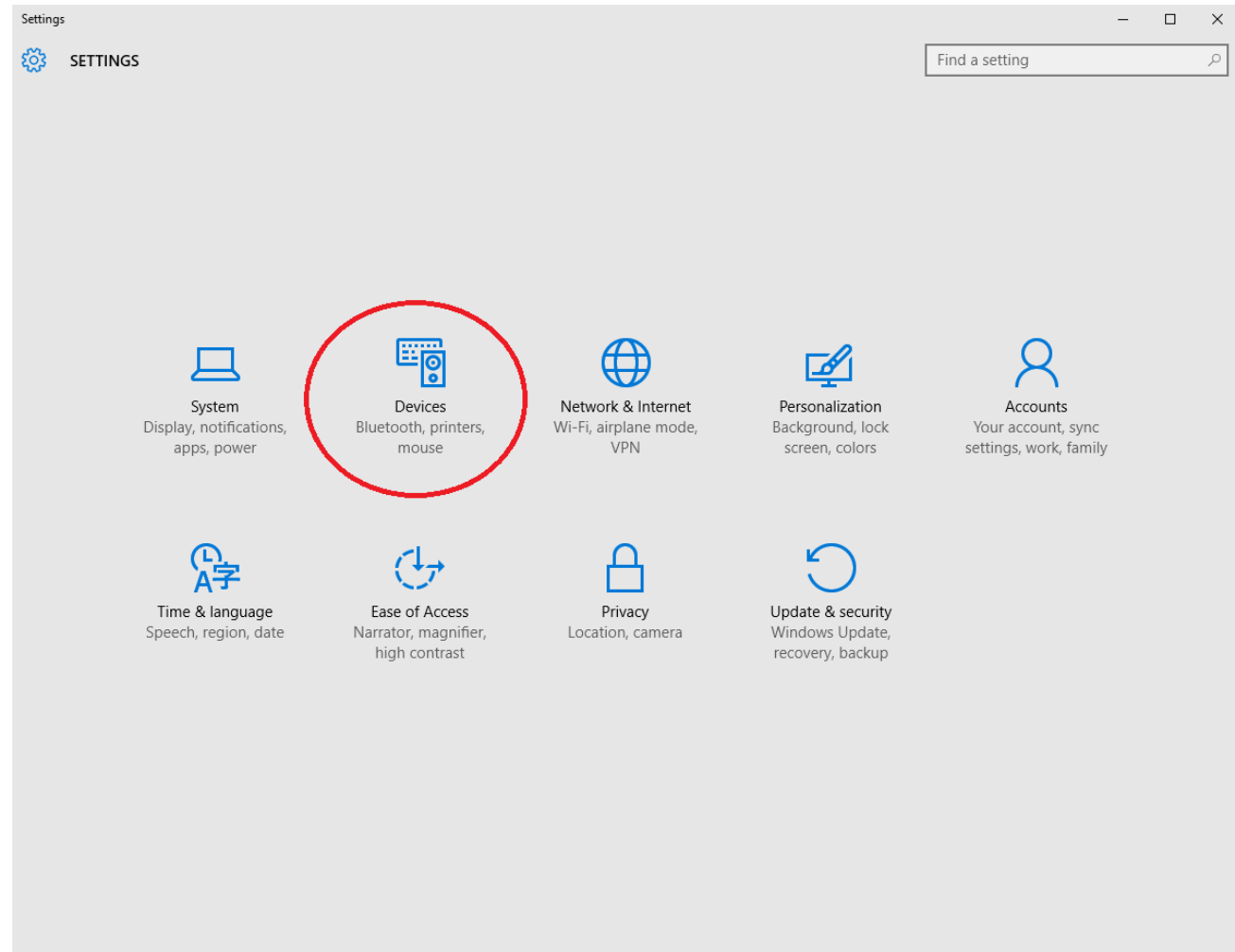
Printer Driver Installation on Windows 10 (Add Printer)

- Click on your **Start Menu** in the lower left hand corner of your screen, then click **Settings**



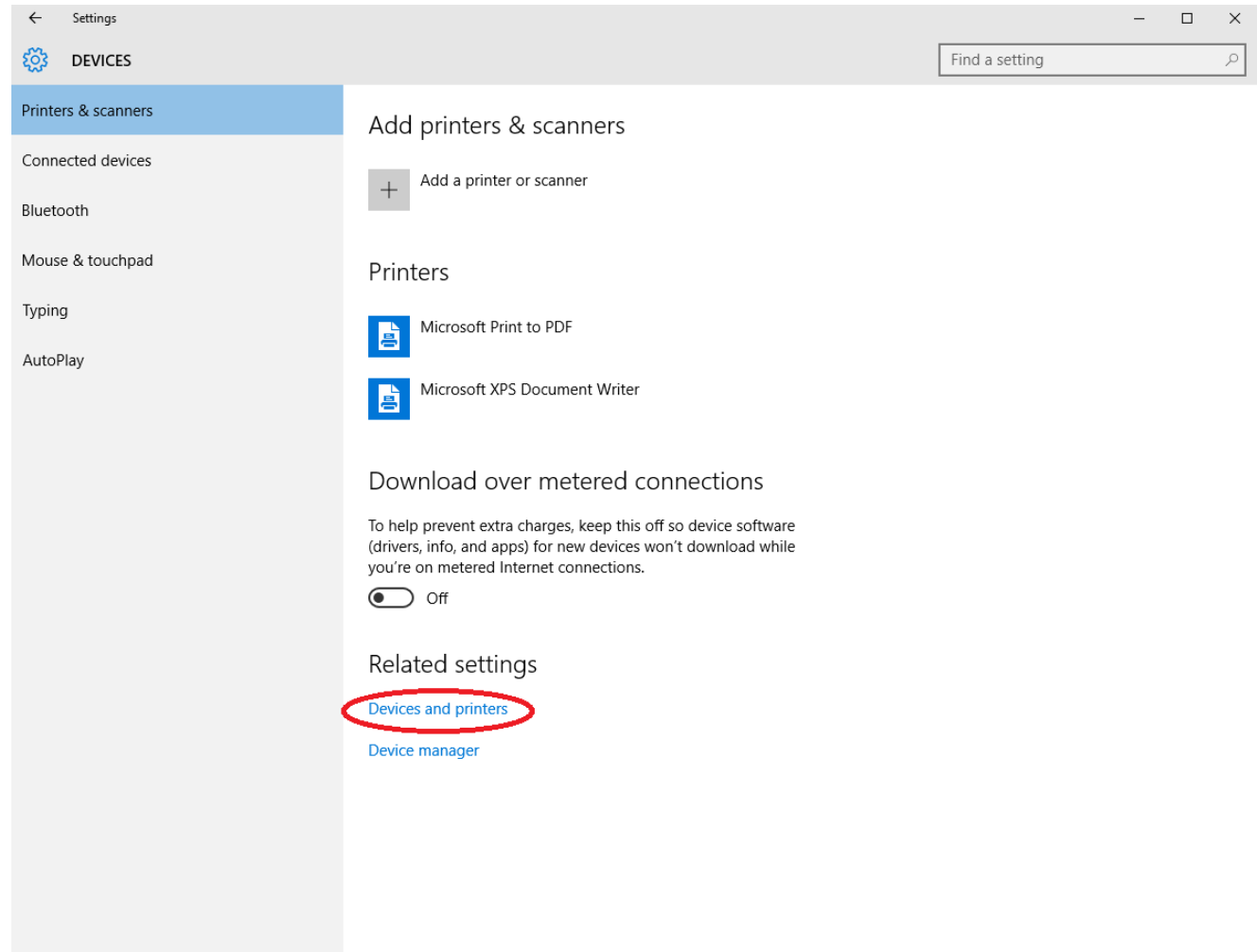
Printer Driver Installation on Windows 10 (Add Printer)

- Click **Devices**



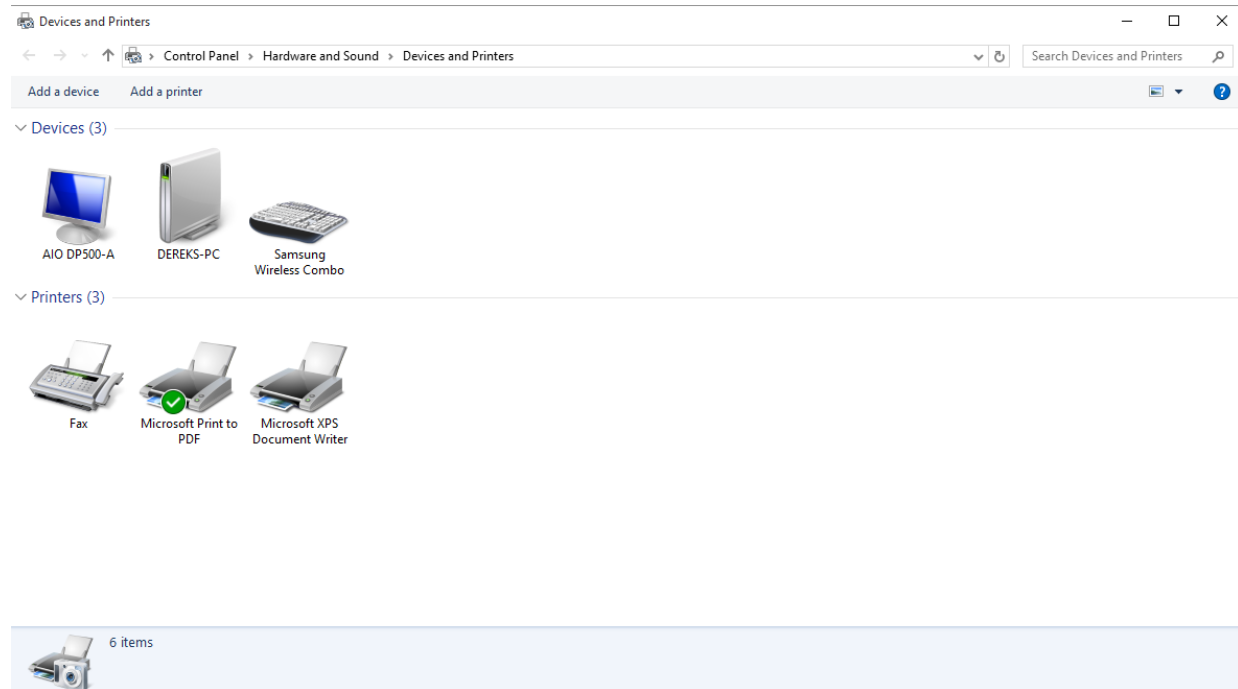
Printer Driver Installation on Windows 10 (Add Printer)

- Click ***Devices and printers***



Printer Driver Installation on Windows 10 (Add Printer)

- Click **Add a printer**



Printer Driver Installation on Windows 10 (Add Printer)

- Click ***The printer that I want isn't listed***



Add a device

Choose a device or printer to add to this PC

Searching for devices



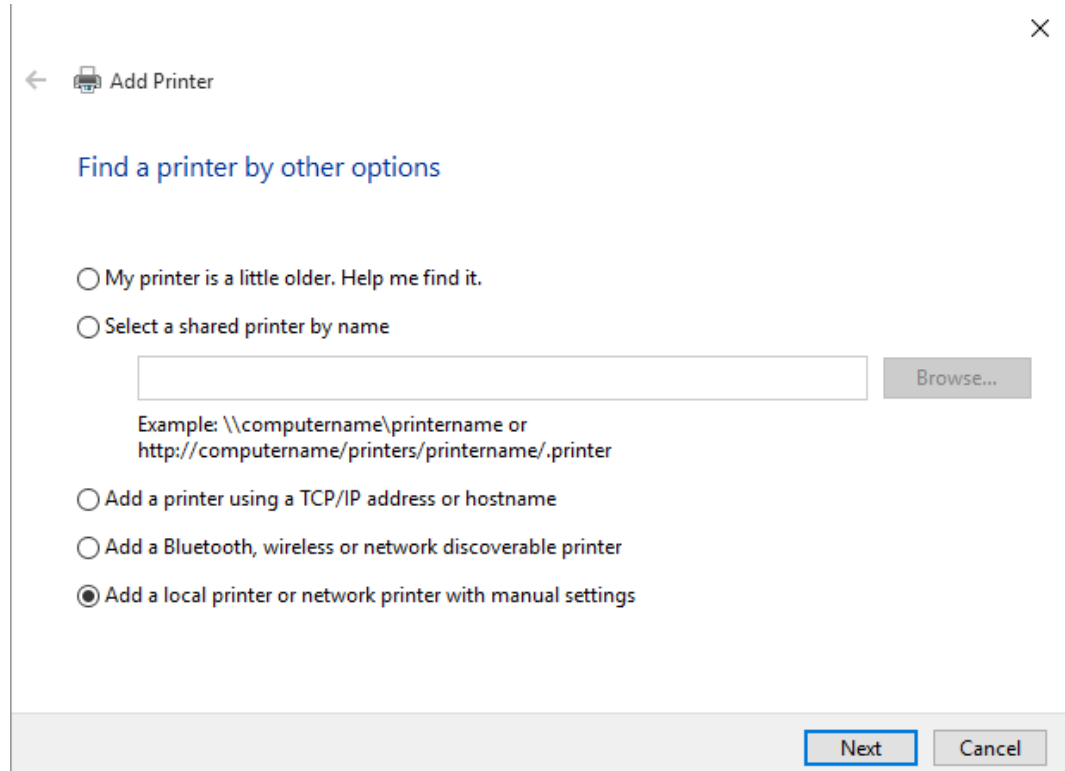
The printer that I want isn't listed

Next

Cancel

Printer Driver Installation on Windows 10 (Add Printer)

- Select **Add a local printer or network printer with manual settings**



← Add Printer

Find a printer by other options

☐ My printer is a little older. Help me find it.

☐ Select a shared printer by name

Browse...

Example: \\computername\printername or
http://computername/printers/printername/.printer

☐ Add a printer using a TCP/IP address or hostname

☐ Add a Bluetooth, wireless or network discoverable printer

☒ Add a local printer or network printer with manual settings

Next Cancel

Printer Driver Installation on Windows 10 (Add Printer)

- Select **Use an existing port** and select your port from the drop down menu, and then click **Next**. If you have a Parallel Printer select LPT1, if you have a Serial Printer select COM1, and if you have a USB Printer select the proper USB port.
- **Note:** In most cases if you have a USB printer, you want to select USB001 as your port as this will be the only USB port listed. If you have multiple USB ports to choose from (USB002, USB003, etc.), run our USBPortView.exe utility, which can be found in the Utilities folder of our Windows driver. After you run the utility, look for the USB port that has “Transact” listed for the Manufacturer. So, for example, if USB003 has “Transact” listed as the Manufacturer, that is the port you will need to choose in the Add Printer Wizard
- **Note:** If installing an Ethernet Printer, select “Create a new port”, then select Standard TCP/IP port for “Type of port”. You will need the IP address to add the TCP/IP port.

← Add Printer

Choose a printer port

A printer port is a type of connection that allows your computer to exchange information with a printer.

☒ Use an existing port:

☐ Create a new port:

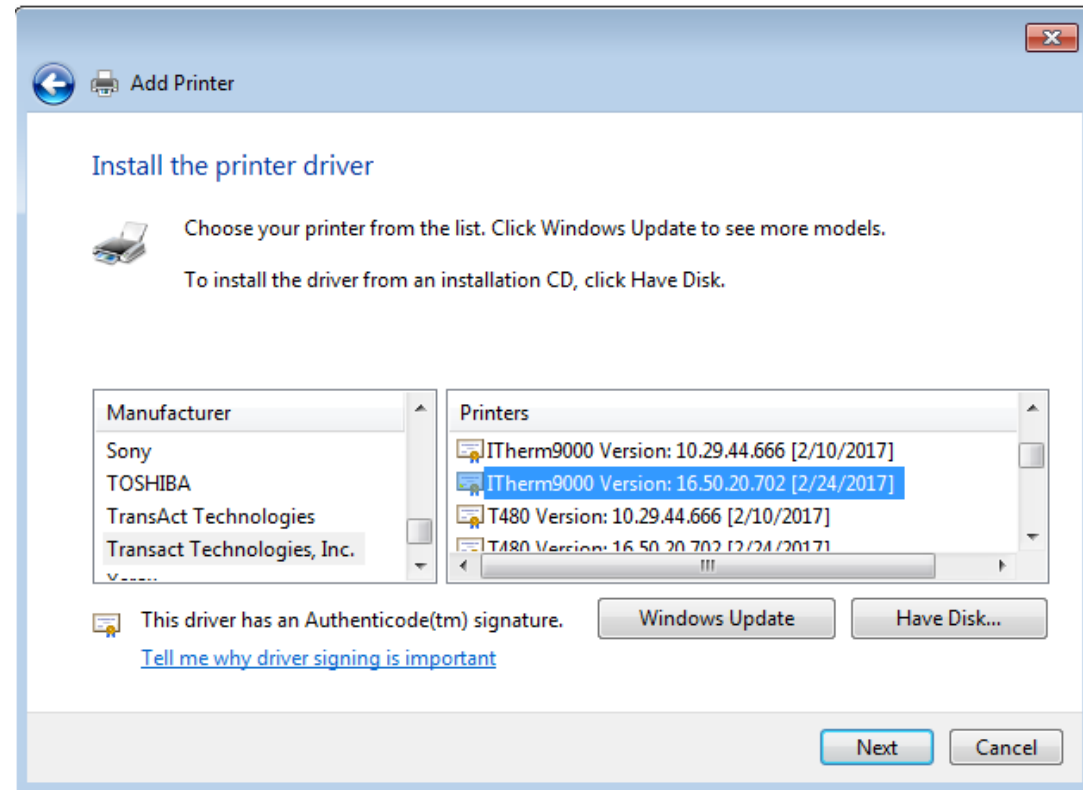
Type of port:

LPT1: (Printer Port)
LPT2: (Printer Port)
LPT3: (Printer Port)
COM1: (Serial Port)
COM2: (Serial Port)
COM3: (Serial Port)
COM4: (Serial Port)
FILE: (Print to File)
PORTPROMPT: (Local Port)

Next Cancel

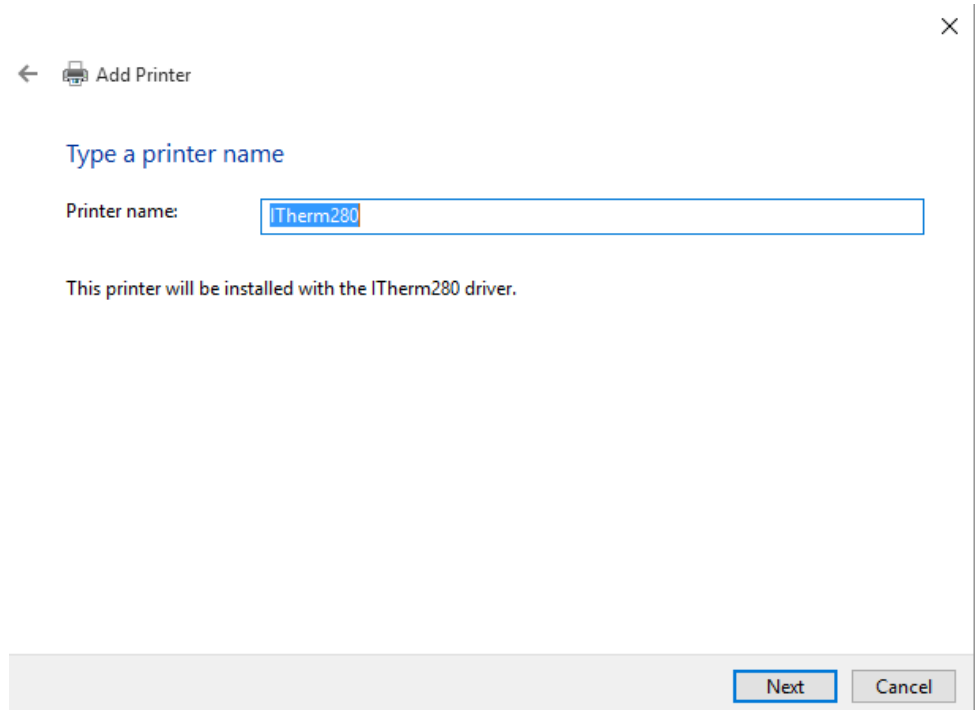
Printer Driver Installation on Windows 10 (Add Printer)

- At the Select Manufacturer and Printer Window, Select TransAct Technologies, Inc. under Manufacturer and Your Printer Model under Printer.
- Click Next.



Printer Driver Installation on Windows 10 (Add Printer)

- For the Printer name, leave it as it is, or name it whatever you would like, then click **Next**.



← Add Printer

Type a printer name

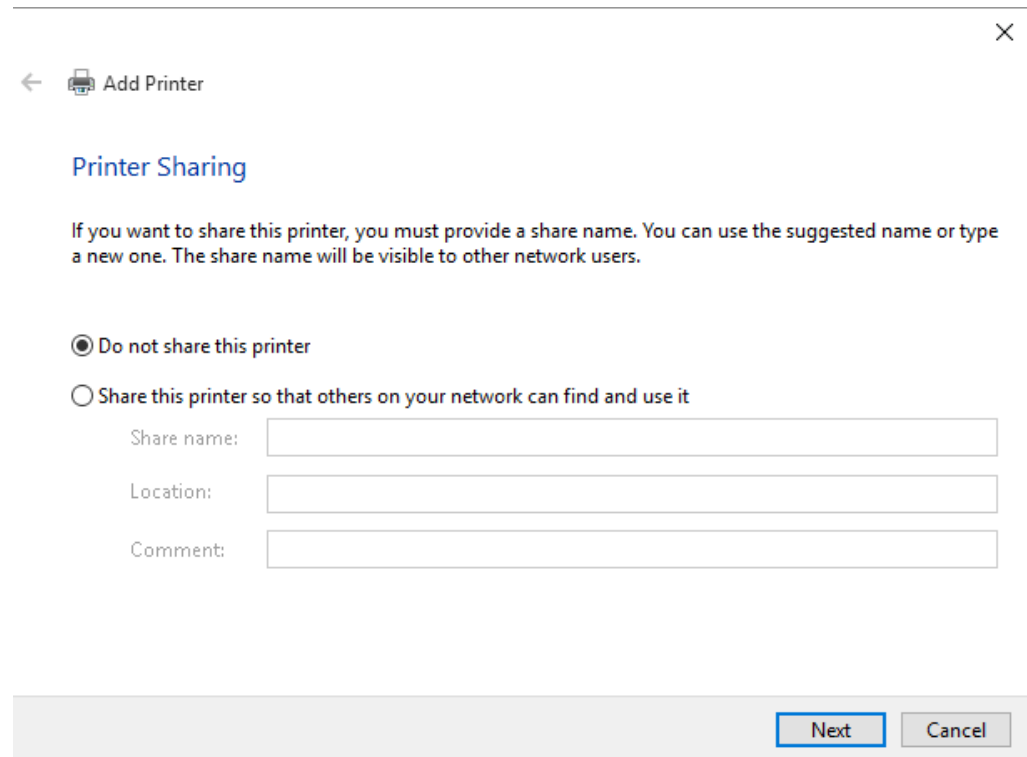
Printer name:

This printer will be installed with the ITherm280 driver.

Next Cancel

Printer Driver Installation on Windows 10 (Add Printer)

- Select ***Do not share this printer***, then click ***Next***.



The screenshot shows the 'Add Printer' window in Windows 10, specifically the 'Printer Sharing' step. The window has a title bar with a close button (X) in the top right corner. Below the title bar is a navigation bar with a back arrow and the text 'Add Printer'. The main content area is titled 'Printer Sharing' in blue. Below the title, there is a paragraph of text: 'If you want to share this printer, you must provide a share name. You can use the suggested name or type a new one. The share name will be visible to other network users.' There are two radio button options: 'Do not share this printer' (which is selected) and 'Share this printer so that others on your network can find and use it'. Below the second option are three text input fields labeled 'Share name:', 'Location:', and 'Comment:'. At the bottom right of the window, there are two buttons: 'Next' (highlighted with a blue border) and 'Cancel'.

← Add Printer

Printer Sharing

If you want to share this printer, you must provide a share name. You can use the suggested name or type a new one. The share name will be visible to other network users.

☒ Do not share this printer

☐ Share this printer so that others on your network can find and use it

Share name:

Location:

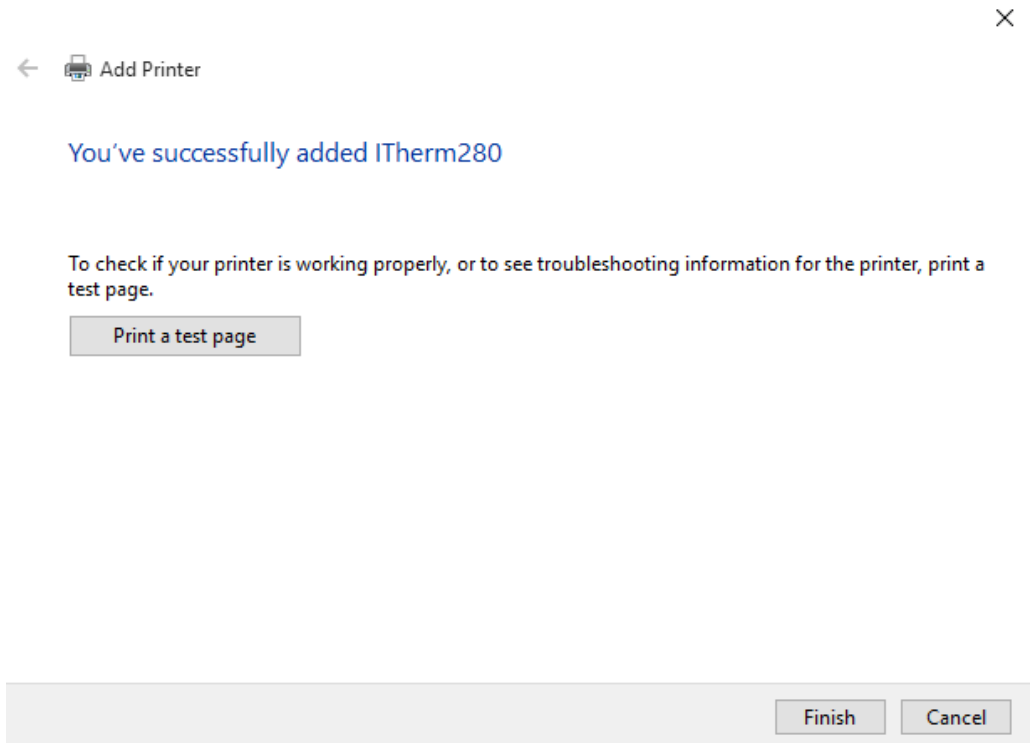
Comment:

Next Cancel

Printer Driver Installation on Windows 10 (Add Printer)

- Click the ***Finish*** button

- Note:** Do not click the “**Print a test page**” button. Skip this for now.

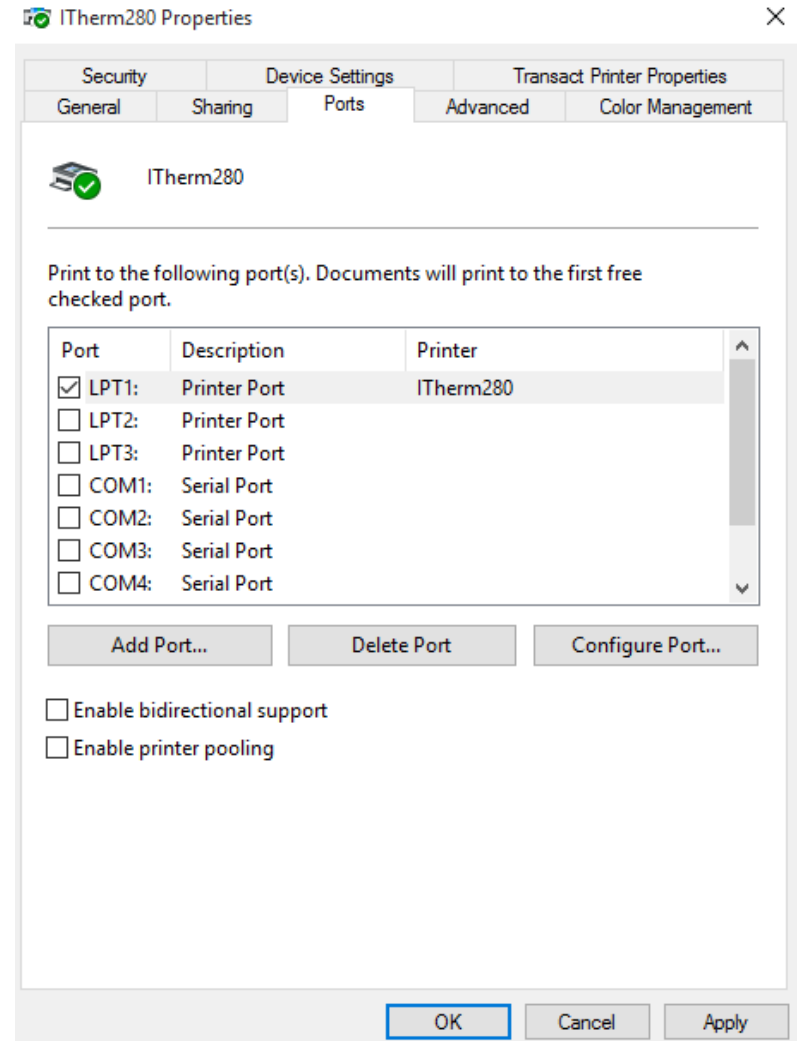


Printer Driver Installation on Windows 10 (Add Printer)

- After installing the printer, go to your Devices and Printers page, and right click on your printer and select Printer Properties, then select the “Ports” tab, and uncheck the “Enable bidirectional support” checkbox, and then click Apply and then OK.

Note: If this is checked, it can cause the printer to print intermittently, or not print at all, and it is checked by default after installing the printer, so make sure to uncheck it.

- Click on the General tab, and under the General tab, click the “Print Test Page” button to print a Windows Test Page, and the Windows Test Page should print out on your printer. Your printer is now installed and ready to use.



TRANSACTION

Visual Quick Start Guide

Printer Driver Install on Windows 8

Printer Driver Installation on Windows 10 (Add Printer)

Setting the 'USB Mode' to 'USB Printer Only'

(this applies to printers with a USB Interface only)

If your printer has a USB Interface, and it is connected to your PC using a USB cable, before installing the printer through the Add Printer Wizard on your Windows 8 PC, please change the "USB Mode" option in the internal configuration of the printer to "USB Printer Only". NOTE: Does not apply for the Model 9000 and Epic 3000 printers.

Please follow the steps below to set the "USB Mode" option in the internal configuration to "USB Printer Only":

- 1.) Unplug the USB cable from the printer and PC.
- 2.) Verify the USB Mode setting is set to USB PRINTER ONLY.
 - a.) Print out the internal configuration settings:
 - b.) Click on the link: <https://www.transact-tech.com/service-and-support>
 - c.) Click your Printer Model.
 - d.) In the Quick Reference section, see Manual Configuration.
 - e.) Follow these instructions to print out the configuration settings, change the settings, and save your changes.
- 3.) **IMPORTANT:** Once you change the "USB Mode" to "USB Printer Only" and save your changes, you **MUST** unplug the power cord physically from the printer for at least 1 minute.
- 4.) Plug the power cord back into the printer.
- 5.) Reboot Windows 8 PC.
- 6.) Verify the printer is on and ready, no error LEDs.
- 7.) Connect the USB cable to the printer.
- 8.) Plug the other end of the USB cable into the PC.
- 9.) Windows 10 should recognize and assign a USB port to the printer.
- 10.) Proceed to the next page to install the Windows drivers as you normally would selecting the USB port assigned by Windows.

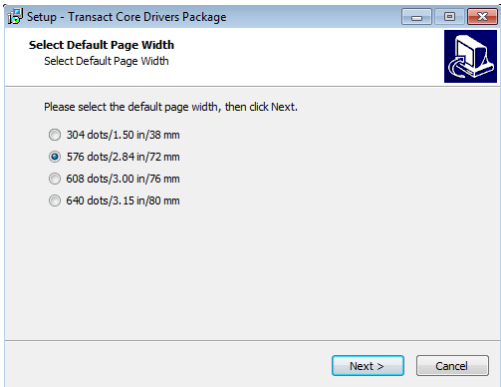
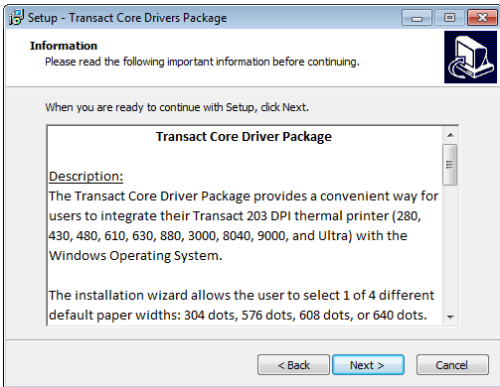
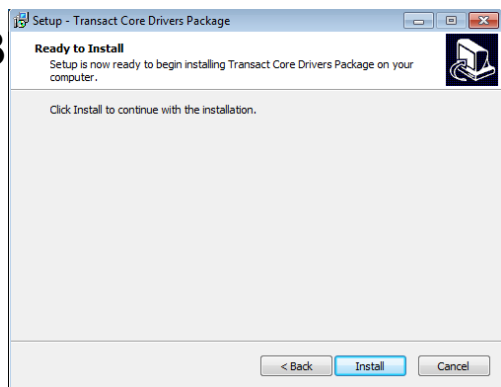
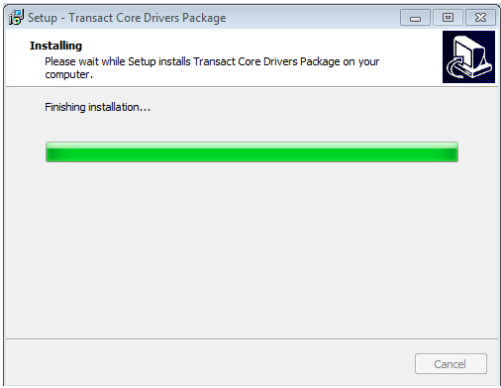
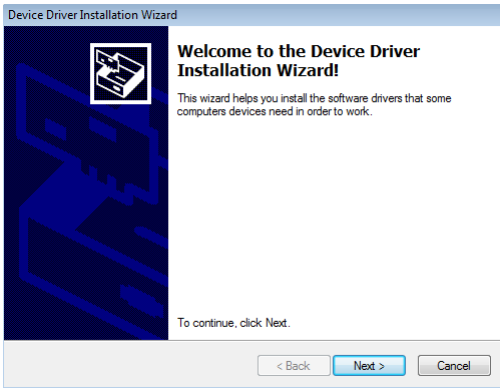
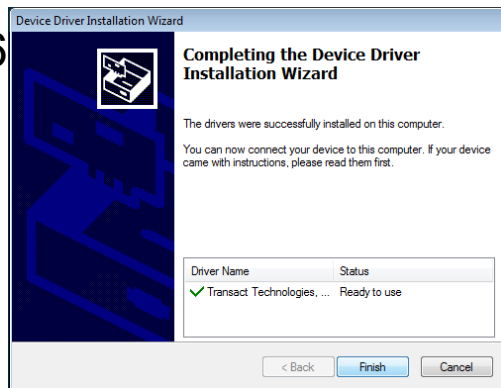
Printer Driver Installation on Windows 8 (Add Printer)

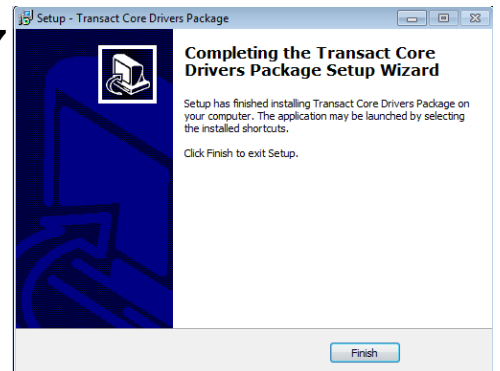
Download Printer Driver from Transact Web Site

www.transact-tech.com

1. First make sure your printer is powered on and connected to your PC. Then, download our Windows 10 driver for your respective printer model by going to our Service & Support section on our website at <http://www.transact-tech.com/service-and-support>, then click on your printer model, and under “Drivers” download the Windows Driver for Windows 7, Windows 8, Windows 8.1, and Windows 10” at the top of the page.
2. Click on the Download link on the right hand side, and then click the Save button, and save the .zip file to your Desktop.
3. On your Desktop you will then see the .zip file for the driver for your respective printer model. Right click this file, and unzip and extract the driver, then run the installer, “200-15480 TransactCoreSetup.exe”. See next page for driver install screenshots then follow the installation guide to add the printer.

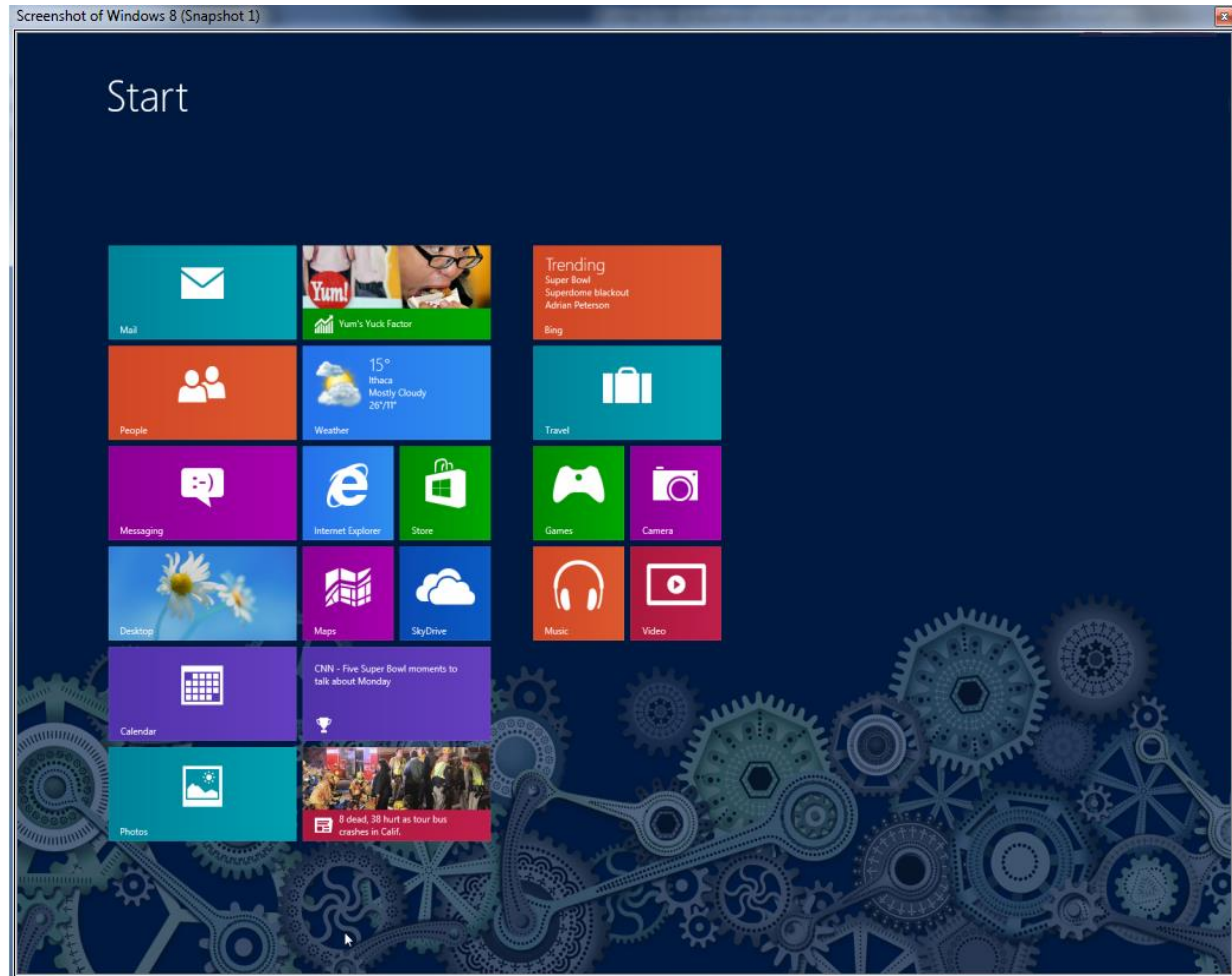
Printer Driver Installation on Windows 7 (Add Printer)

- 
- 
- 
- 
- 
- 

Driver Name	Status
✓ Transact Technologies, ...	Ready to use
- 

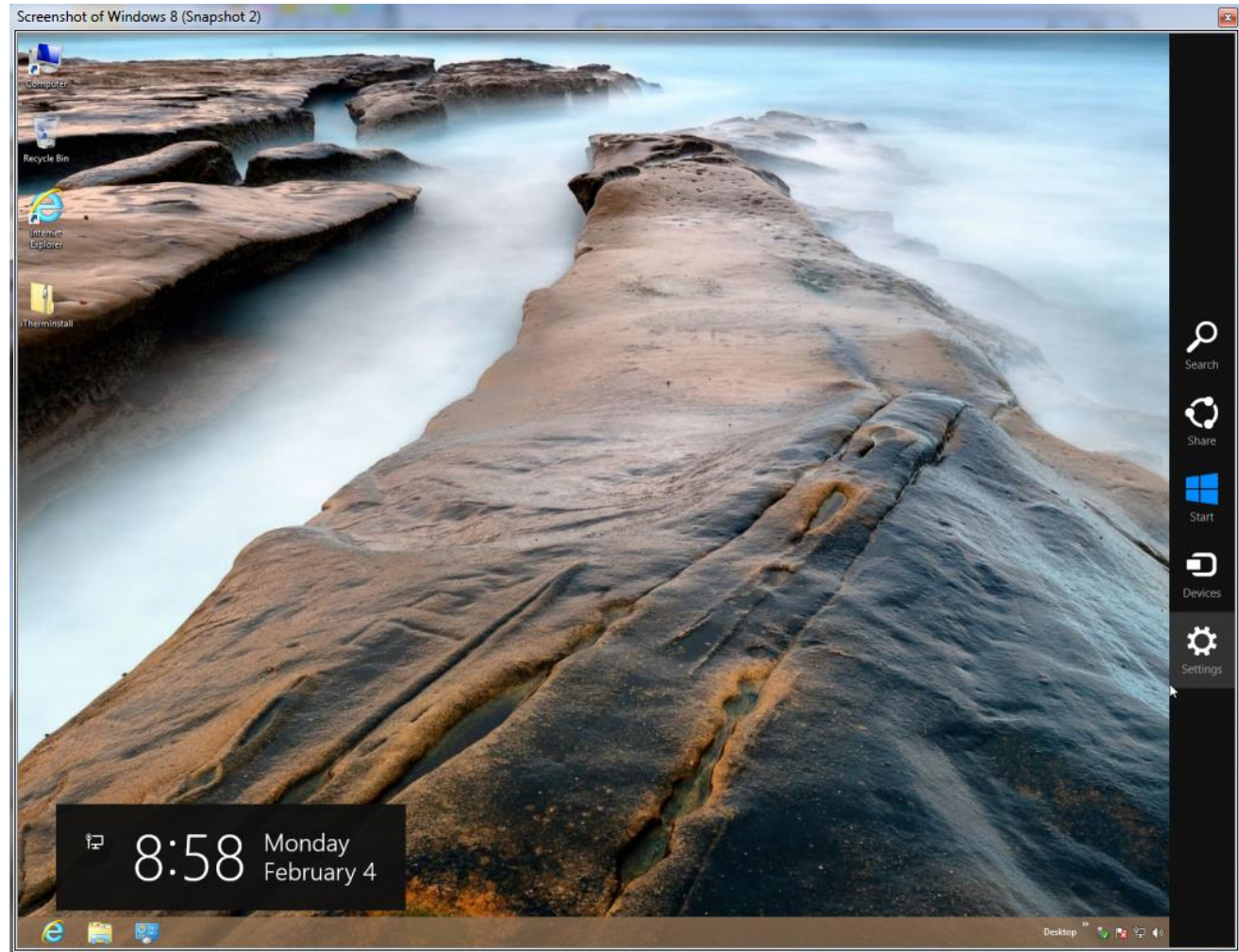
Printer Driver Installation on Windows 8 (Add Printer)

- Click on **Desktop**



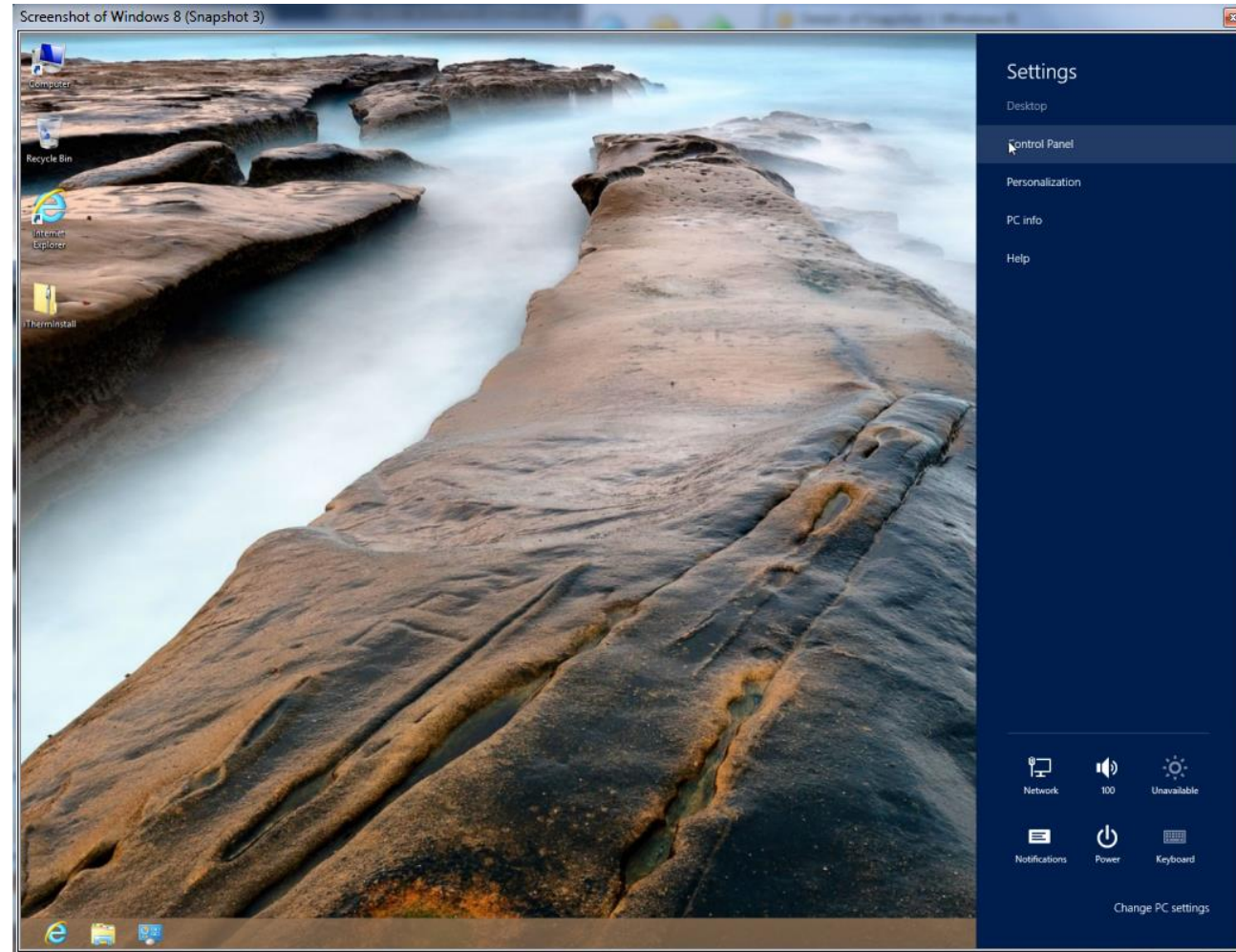
Printer Driver Installation on Windows 8 (Add Printer)

- Click **Settings** in the side panel on the right hand side of the screen (this side panel can be accessed by pointing your cursor in the upper right hand corner of the screen)



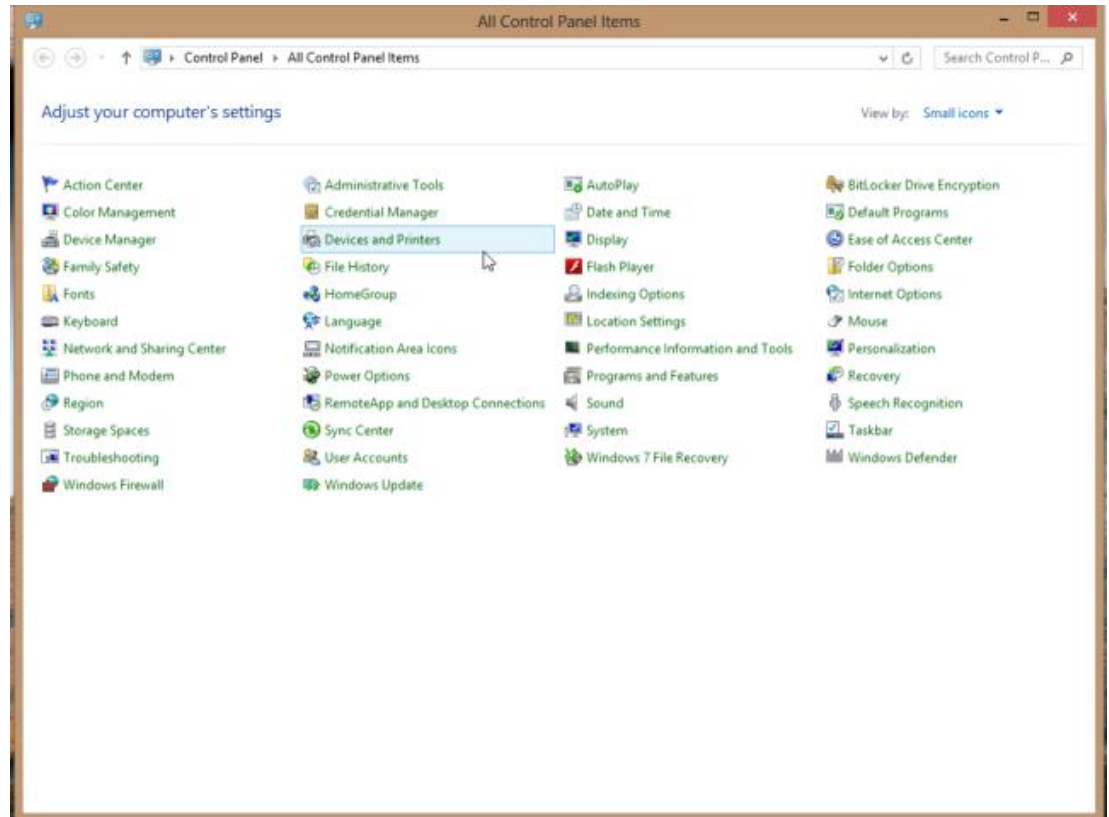
Printer Driver Installation on Windows 8 (Add Printer)

- Click **Control Panel**



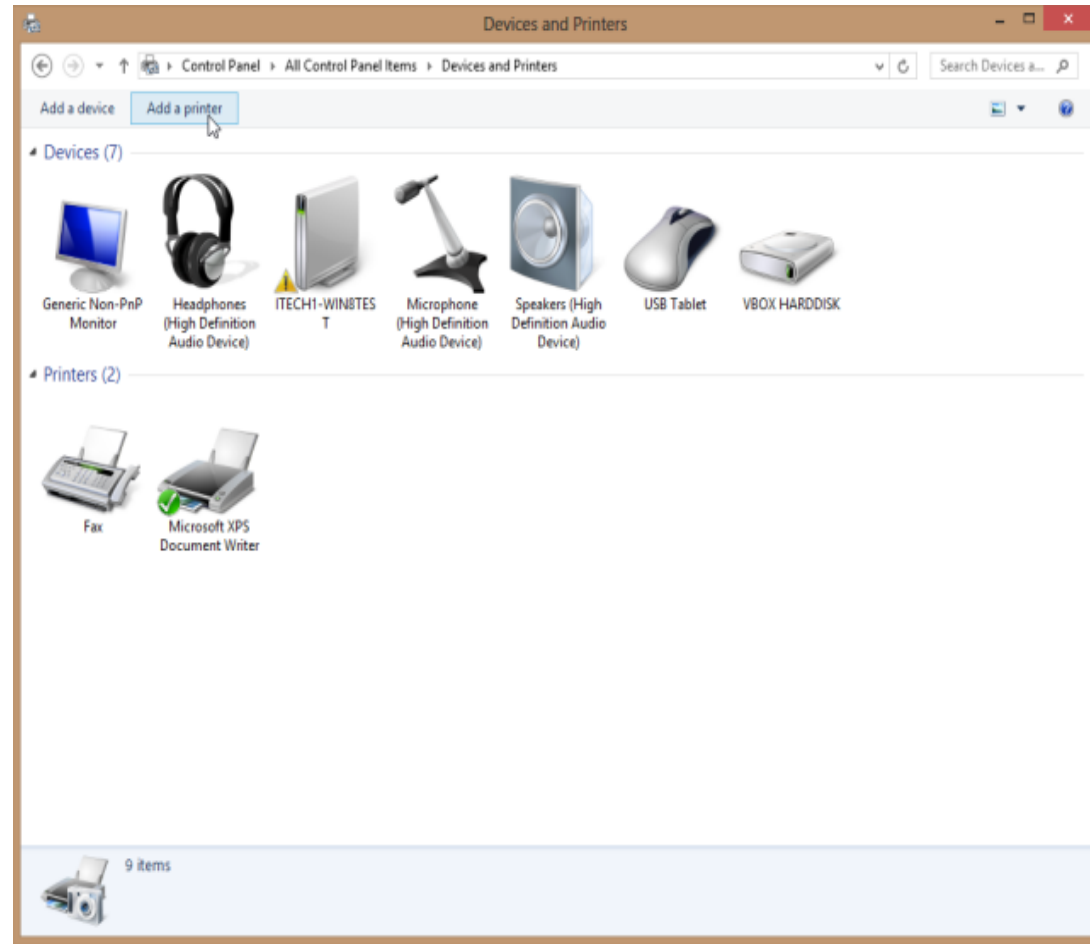
Printer Driver Installation on Windows 8 (Add Printer)

- Click on ***Devices and Printers***



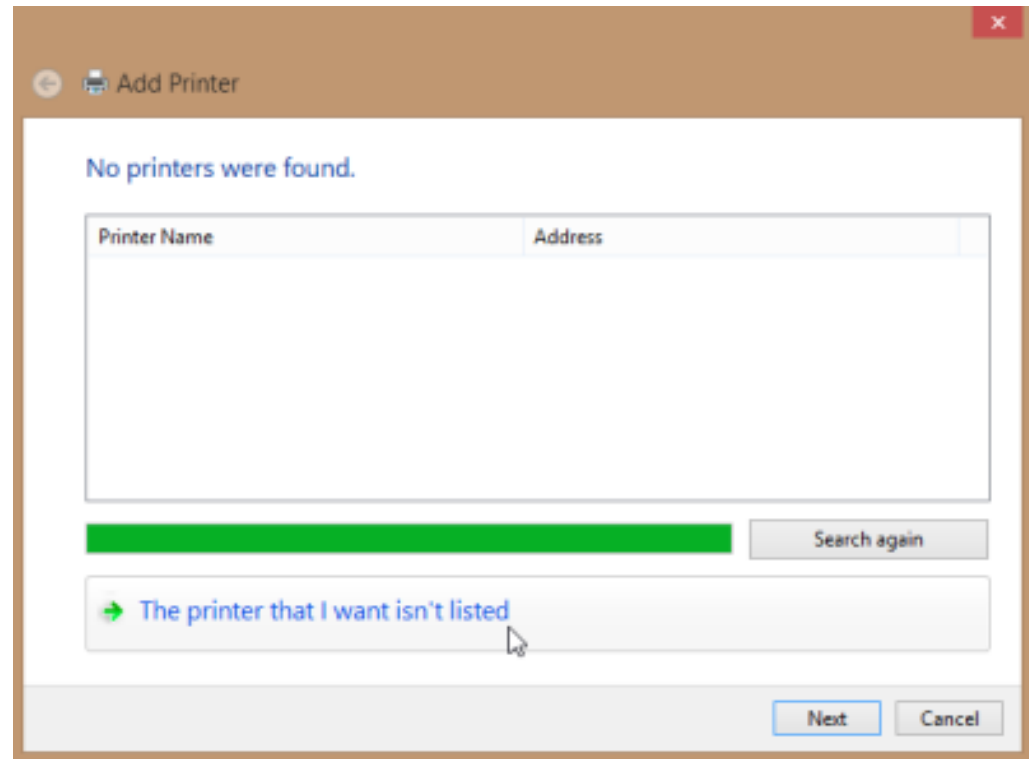
Printer Driver Installation on Windows 8 (Add Printer)

- Click the **Add a printer** button



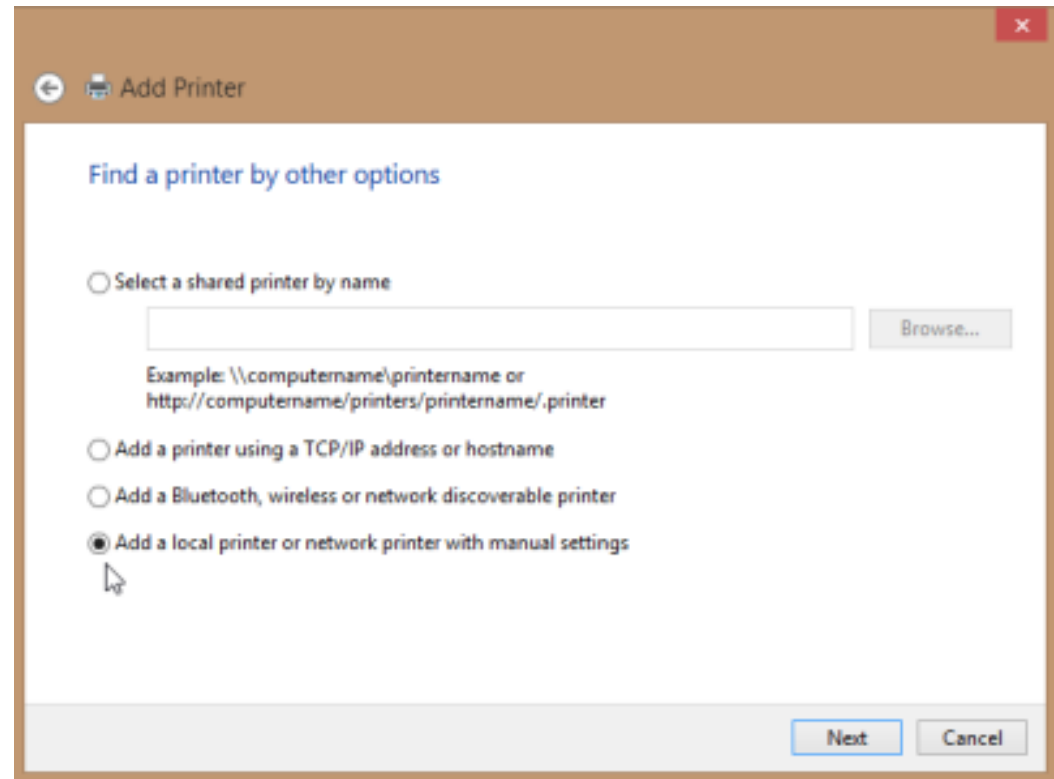
Printer Driver Installation on Windows 8 (Add Printer)

- Click ***The printer that I want isn't listed***



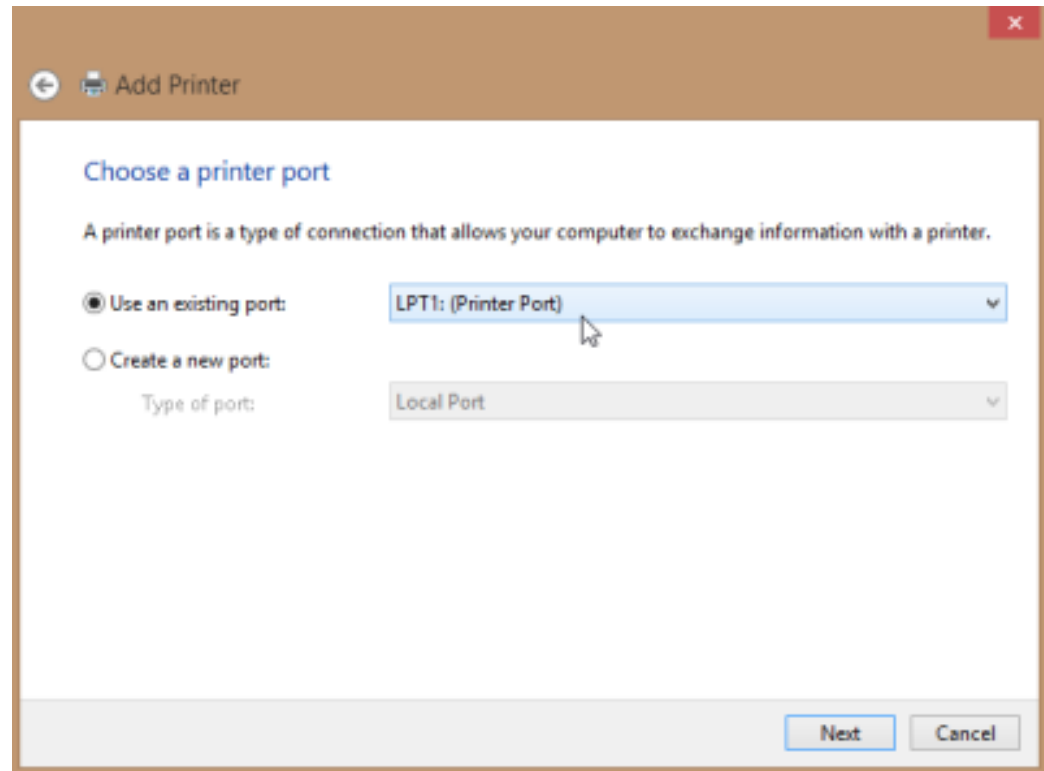
Printer Driver Installation on Windows 8 (Add Printer)

- Select **Add a local printer or network printer with manual settings**



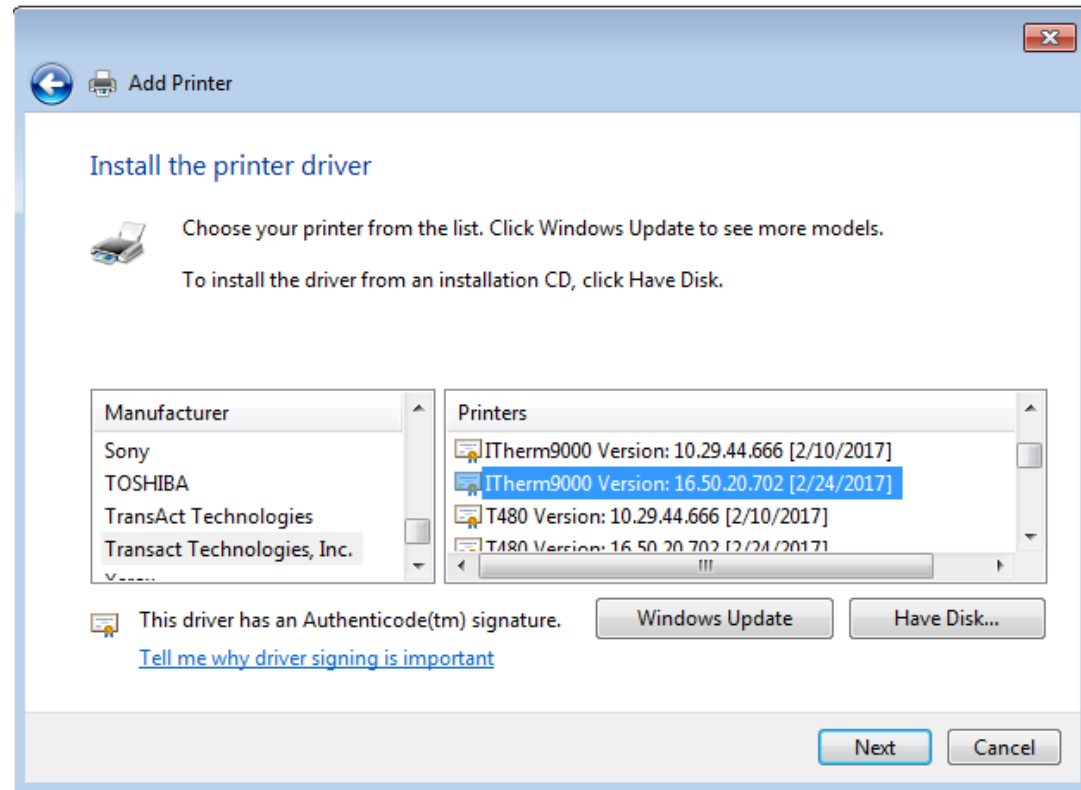
Printer Driver Installation on Windows 8 (Add Printer)

- Select **Use an existing port** and select your port from the drop down menu, and then click **Next**. If you have a Parallel Printer select LPT1, if you have a Serial Printer select COM1, and if you have a USB Printer select the proper USB port.
- **Note:** In most cases if you have a USB printer, you want to select USB001 as your port as this will be the only USB port listed. If you have multiple USB ports to choose from (USB002, USB003, etc.), run our USBPortView.exe utility, which can be found in the Utilities folder of our Windows driver. After you run the utility, look for the USB port that has “Transact” listed for the Manufacturer. So, for example, if USB003 has “Transact” listed as the Manufacturer, that is the port you will need to choose in the Add Printer Wizard
- **Note:** If installing an Ethernet Printer, select “Create a new port”, then select Standard TCP/IP port for “Type of port”. You will need the IP address to add the TCP/IP port.



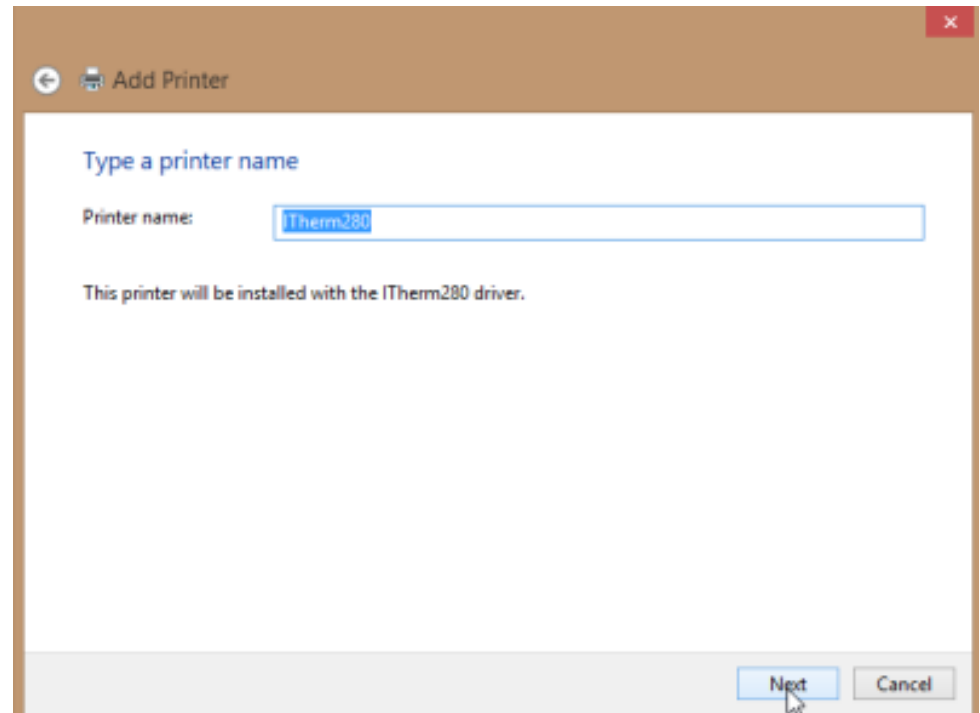
Printer Driver Installation on Windows 8 (Add Printer)

- At the Select Manufacturer and Printer Window, Select TransAct Technologies, Inc. under Manufacturer and Your Printer Model under Printer.
- Click Next.



Printer Driver Installation on Windows 8 (Add Printer)

- For the Printer name, leave it as it is, or name it whatever you would like, then click **Next**.



Printer Driver Installation on Windows 8 (Add Printer)

- Select ***Do not share this printer***, then click ***Next***.

Printer Sharing

If you want to share this printer, you must provide a share name. You can use the suggested name or type a new one. The share name will be visible to other network users.

☒ Do not share this printer

☐ Share this printer so that others on your network can find and use it

Share name:

Location:

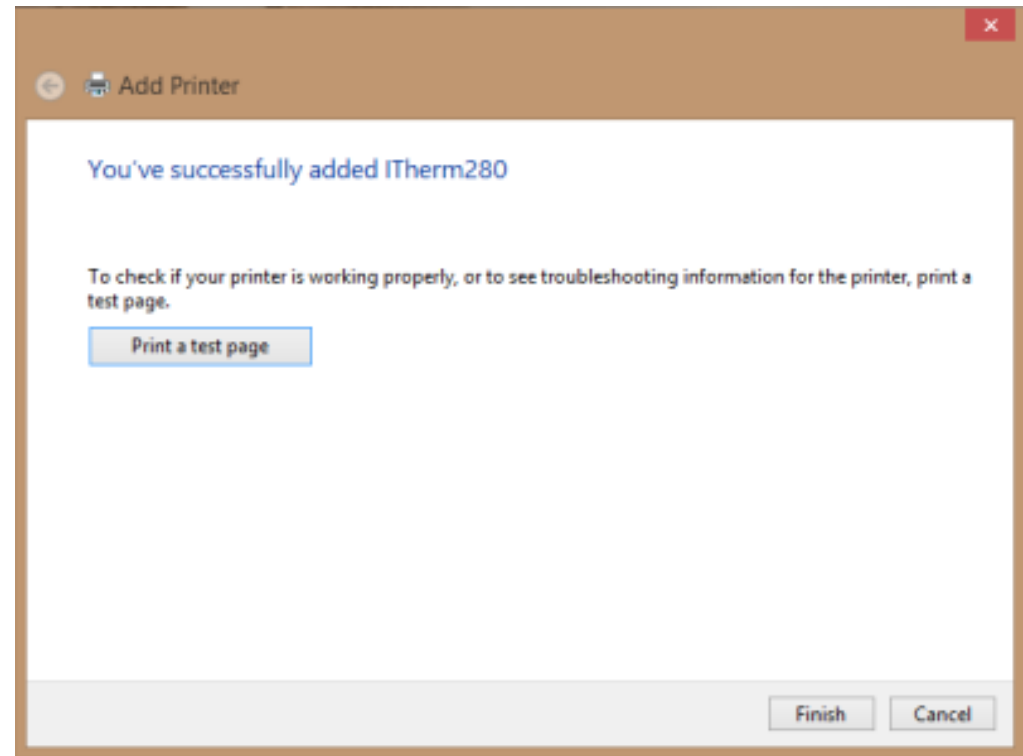
Comment:

Next Cancel

Printer Driver Installation on Windows 8 (Add Printer)

- Click the **Finish** button

- Note:** Do not click the “**Print a test page**” button. Skip this for now.

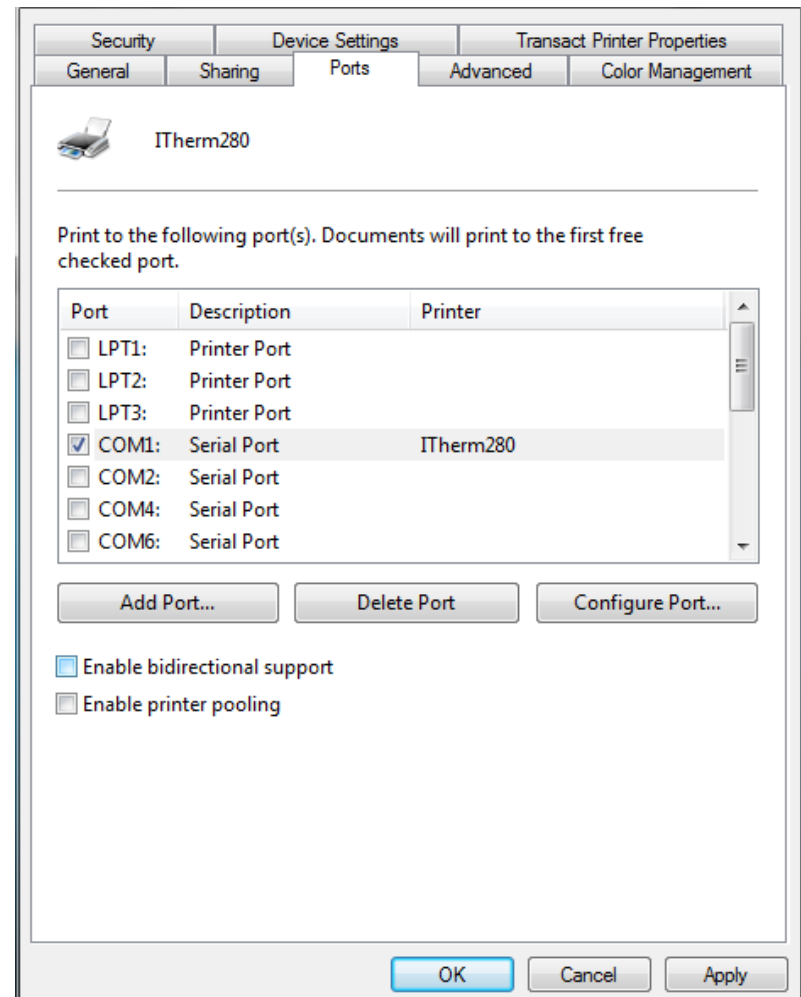


Printer Driver Installation on Windows 8 (Add Printer)

- After installing the printer, go to your Devices and Printers page, and right click on your printer and select Printer Properties, then select the “Ports” tab, and uncheck the “Enable bidirectional support” checkbox, and then click Apply and then OK.

Note: If this is checked, it can cause the printer to print intermittently, or not print at all, and it is checked by default after installing the printer, so make sure to uncheck it.

- Click on the General tab, and under the General tab, click the “Print Test Page” button to print a Windows Test Page, and the Windows Test Page should print out on your printer. Your printer is now installed and ready to use.



TRANSACTION

Visual Quick Start Guide

Printer Driver Install on Windows 7

Printer Driver Installation on Windows 7 (Add Printer)

Download Printer Driver from Transact Web Site

www.transact-tech.com

1. First make sure your printer is powered on and connected to your PC. Then, download our Windows 10 driver for your respective printer model by going to our Service & Support section on our website at <http://www.transact-tech.com/service-and-support>, then click on your printer model, and under “Drivers” download the Windows Driver for Windows 7, Windows 8, Windows 8.1, and Windows 10” at the top of the page.
2. Click on the Download link on the right hand side, and then click the Save button, and save the .zip file to your Desktop.
3. On your Desktop you will then see the .zip file for the driver for your respective printer model. Right click this file, and unzip and extract the driver, then run the installer, “200-15480 TransactCoreSetup.exe”. See next page for driver install screenshots then follow the installation guide to add the printer.

Printer Driver Installation on Windows 7 (Add Printer)

- 1** **Select Default Page Width**
Select Default Page Width
Please select the default page width, then click Next.
 - ☐ 304 dots/1.50 in/38 mm
 - ☒ 576 dots/2.84 in/72 mm
 - ☐ 608 dots/3.00 in/76 mm
 - ☐ 640 dots/3.15 in/80 mm

Next > Cancel
- 2** **Information**
Please read the following important information before continuing.
When you are ready to continue with Setup, click Next.
Transact Core Driver Package
Description:
The Transact Core Driver Package provides a convenient way for users to integrate their Transact 203 DPI thermal printer (280, 430, 480, 610, 630, 880, 3000, 8040, 9000, and Ultra) with the Windows Operating System.
The installation wizard allows the user to select 1 of 4 different default paper widths: 304 dots, 576 dots, 608 dots, or 640 dots.

< Back Next > Cancel
- 3** **Ready to Install**
Setup is now ready to begin installing Transact Core Drivers Package on your computer.
Click Install to continue with the installation.

< Back Install Cancel
- 4** **Installing**
Please wait while Setup installs Transact Core Drivers Package on your computer.
Finishing installation...

Cancel
- 5** **Device Driver Installation Wizard**
Welcome to the Device Driver Installation Wizard!
This wizard helps you install the software drivers that some computers devices need in order to work.
To continue, click Next.

< Back Next > Cancel
- 6** **Device Driver Installation Wizard**
Completing the Device Driver Installation Wizard
The drivers were successfully installed on this computer.
You can now connect your device to this computer. If your device came with instructions, please read them first.

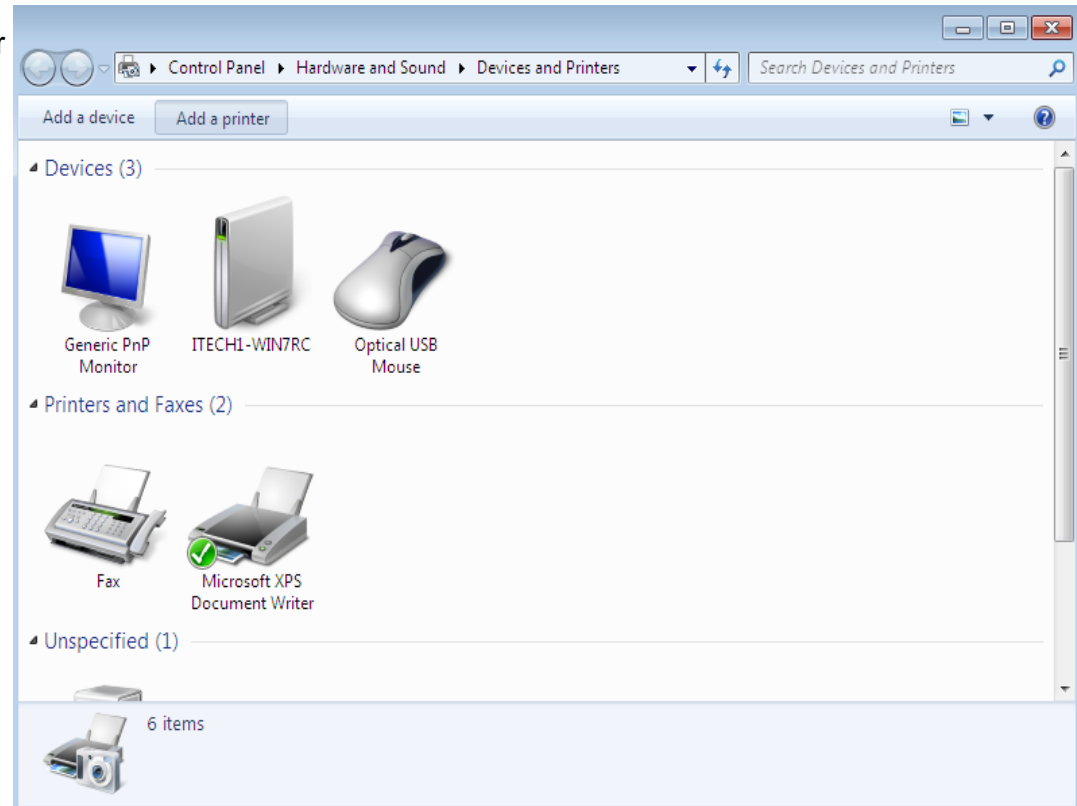
Driver Name	Status
✓ Transact Technologies, ...	Ready to use

< Back Finish Cancel
- 7** **Setup - Transact Core Drivers Package**
Completing the Transact Core Drivers Package Setup Wizard
Setup has finished installing Transact Core Drivers Package on your computer. The application may be launched by selecting the installed shortcuts.
Click Finish to exit Setup.

Finish

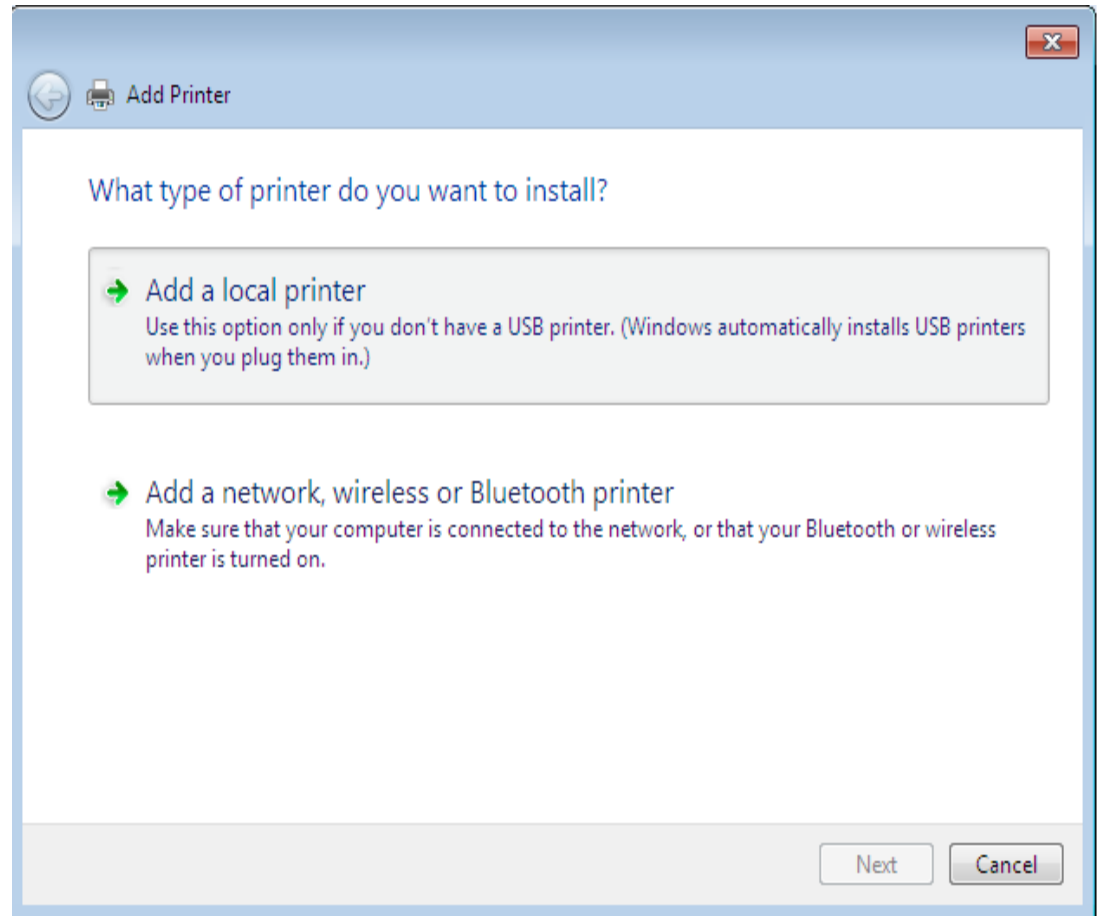
Printer Driver Installation on Windows 7 (Add Printer)

- Click your **Start Menu** in the lower left hand corner of your screen
- Select **Device and Printers**
- Click the **Add a printer** button



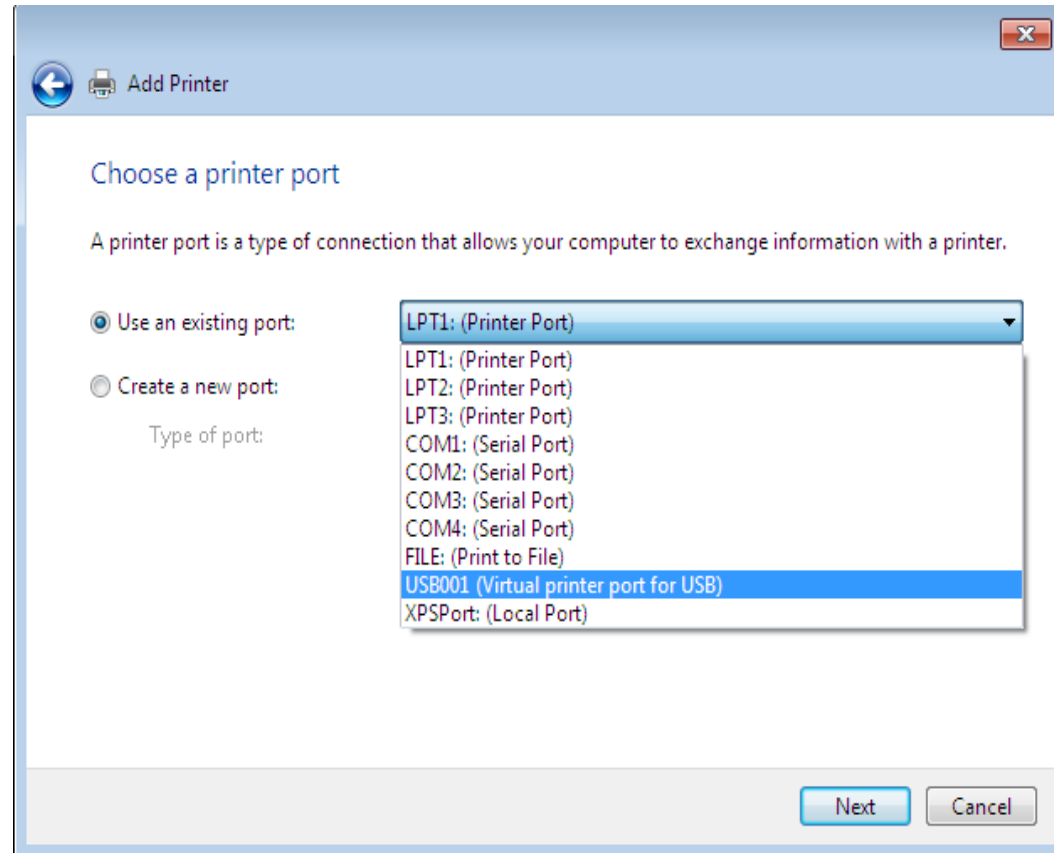
Printer Driver Installation on Windows 7 (Add Printer)

- Select **Add a local printer**



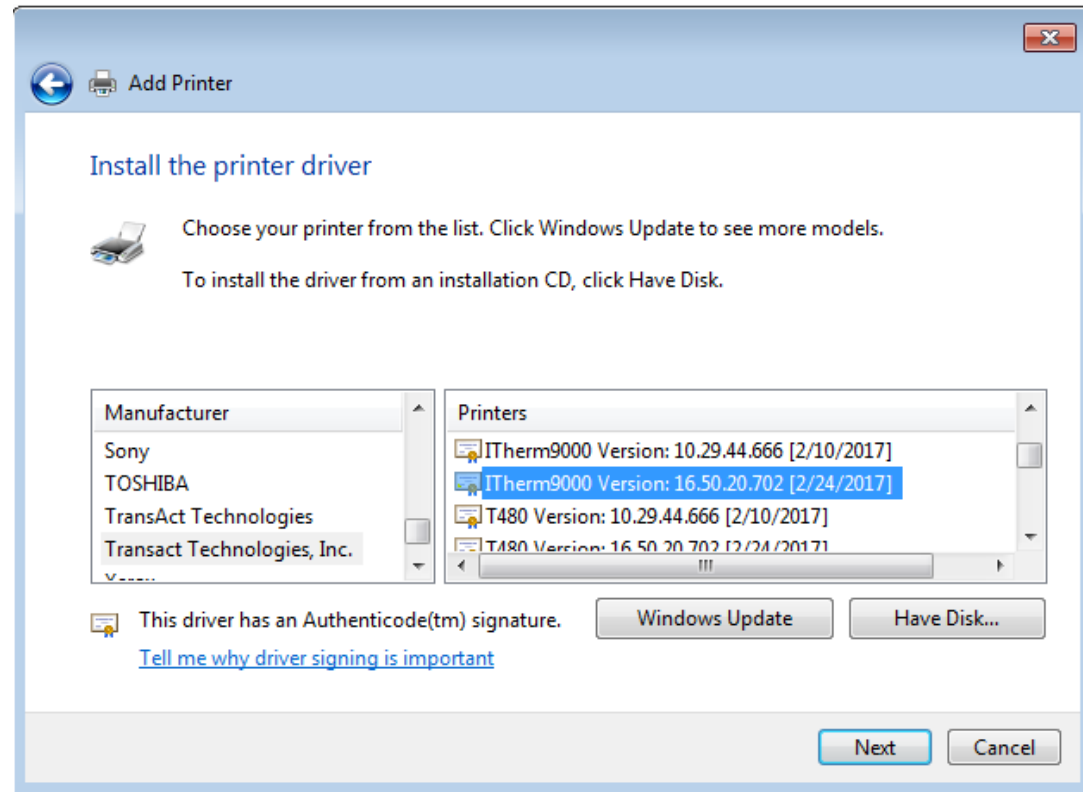
Printer Driver Installation on Windows 7 (Add Printer)

- Select **Use an existing port** and select your port from the drop down menu, and then click **Next**. If you have a Parallel Printer select LPT1, if you have a Serial Printer select COM1, and if you have a USB Printer select the proper USB port.
- **Note:** In most cases if you have a USB printer, you want to select USB001 as your port as this will be the only USB port listed. If you have multiple USB ports to choose from (USB002, USB003, etc.), run our USBPortView.exe utility, which can be found in the Utilities folder of our Windows driver. After you run the utility, look for the USB port that has “Transact” listed for the Manufacturer. So, for example, if USB003 has “Transact” listed as the Manufacturer, that is the port you will need to choose in the Add Printer Wizard
- **Note:** If installing an Ethernet Printer, select “Create a new port”, then select Standard TCP/IP port for “Type of port”. You will need the IP address to add the TCP/IP port.



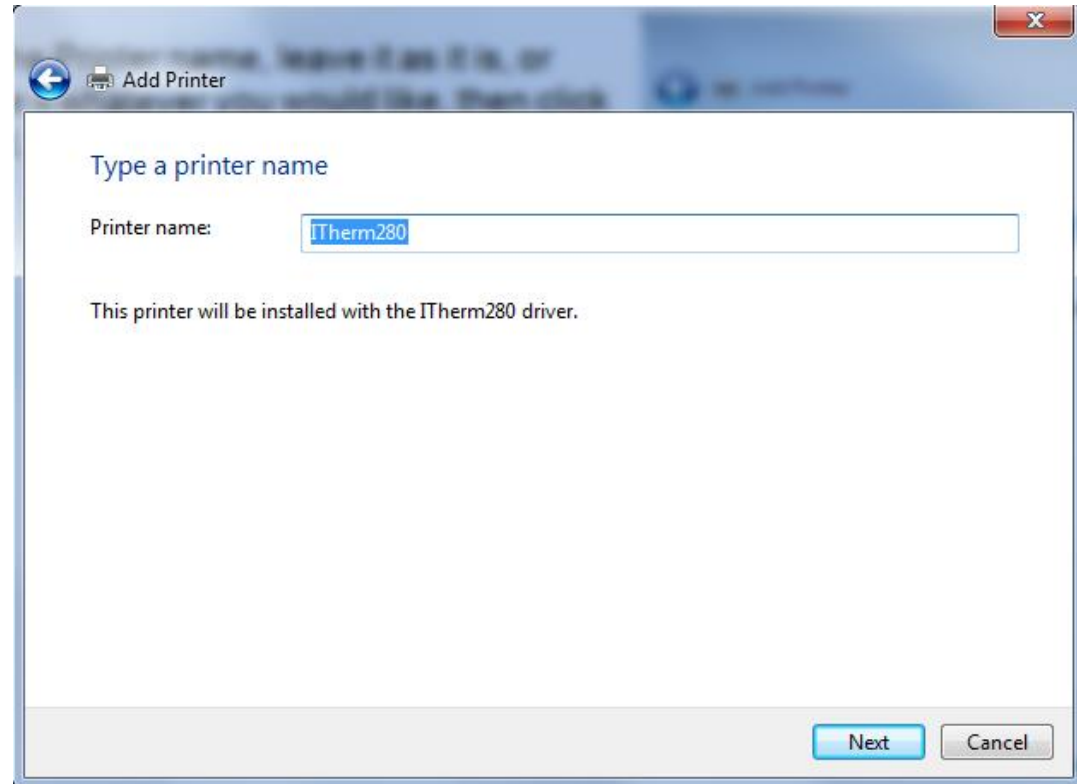
Printer Driver Installation on Windows 7 (Add Printer)

- At the Select Manufacturer and Printer Window, Select TransAct Technologies, Inc. under Manufacturer and Your Printer Model under Printer.
- Click Next.



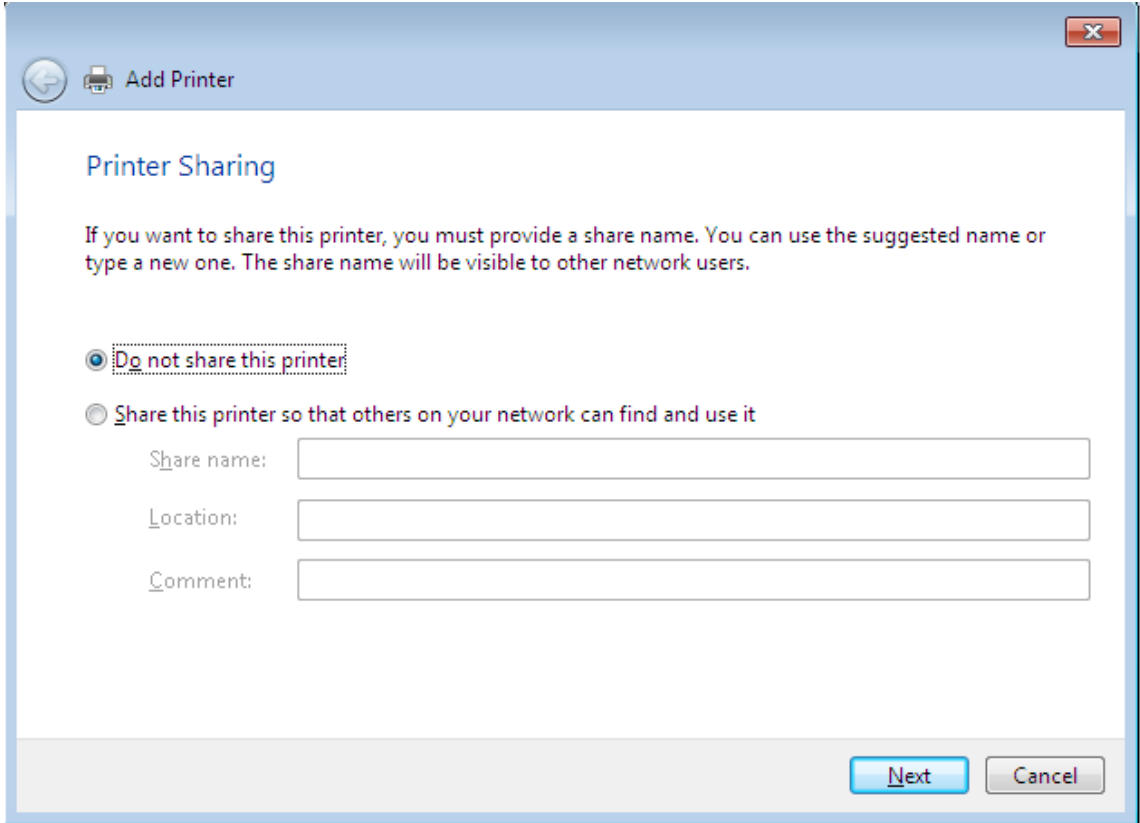
Printer Driver Installation on Windows 7 (Add Printer)

- For the Printer name, leave it as it is, or name it whatever you would like, then click **Next**.



Printer Driver Installation on Windows 7 (Add Printer)

- Select ***Do not share this printer***, then click ***Next***.



The screenshot shows the 'Add Printer' wizard in Windows 7, specifically the 'Printer Sharing' step. The window title is 'Add Printer'. The main heading is 'Printer Sharing'. Below the heading, there is a text box explaining that if you want to share the printer, you must provide a share name, which will be visible to other network users. There are two radio button options: 'Do not share this printer' (which is selected) and 'Share this printer so that others on your network can find and use it'. If the second option is selected, there are three text input fields for 'Share name:', 'Location:', and 'Comment:'. At the bottom right, there are 'Next' and 'Cancel' buttons.

Printer Sharing

If you want to share this printer, you must provide a share name. You can use the suggested name or type a new one. The share name will be visible to other network users.

☒ Do not share this printer

☐ Share this printer so that others on your network can find and use it

Share name:

Location:

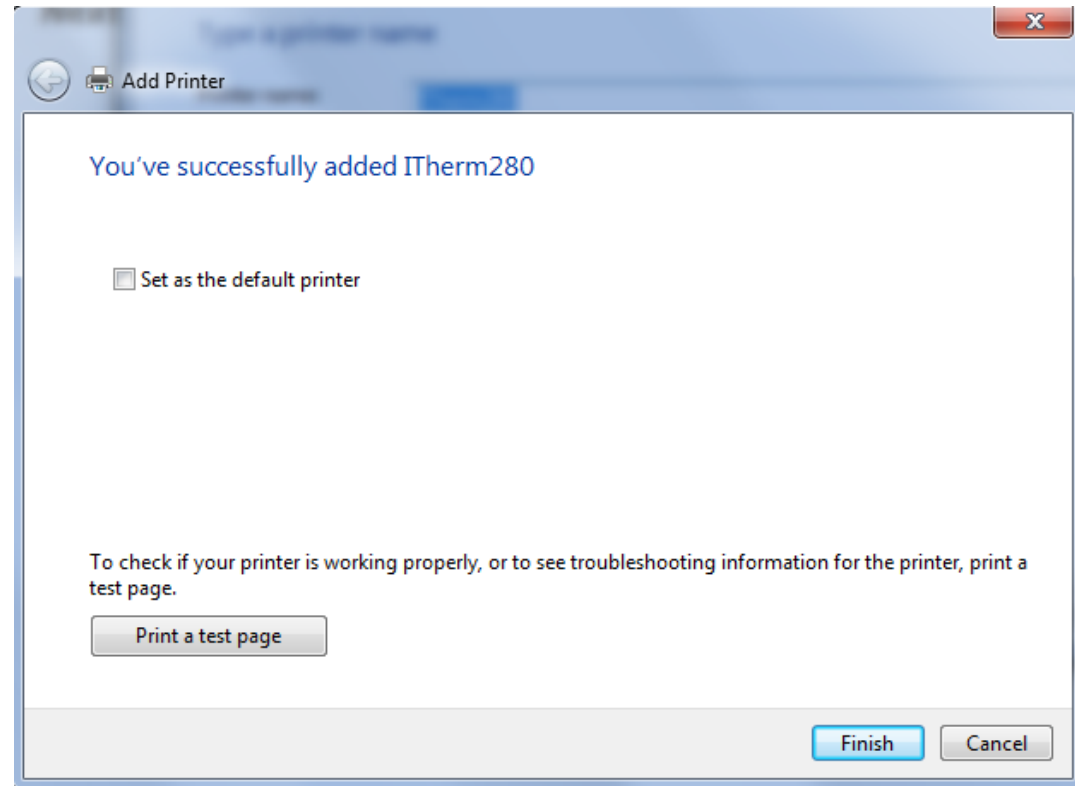
Comment:

Next **Cancel**

Printer Driver Installation on Windows 7 (Add Printer)

- Click the **Finish** button

- Note:** Do not click the “**Print a test page**” button. Skip this for now.



Printer Driver Installation on Windows 7 (Add Printer)

- After installing the printer, go to your Devices and Printers page, and right click on your printer and select Printer Properties, then select the “Ports” tab, and uncheck the “Enable bidirectional support” checkbox, and then click Apply and then OK.

Note: If this is checked, it can cause the printer to print intermittently, or not print at all, and it is checked by default after installing the printer, so make sure to uncheck it.

- Click on the General tab, and under the General tab, click the “Print Test Page” button to print a Windows Test Page, and the Windows Test Page should print out on your printer. Your printer is now installed and ready to use.

